

DESCRIPTION

Solenoid valve 2 way normally closed
direct acting with dry armature.
No metal parts in contact with the media.

CONSTRUCTION

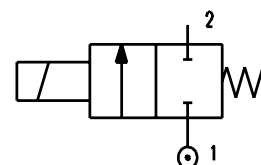
| | |
|------------------|------------------|
| Body | Acetal copolymer |
| Armature tube | Brass |
| Plunger and core | AISI 430FR |
| Springs | AISI 302 |
| Seal material | SILICONE |



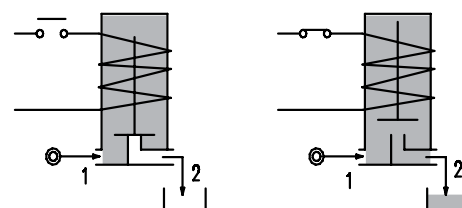
2

FEATURES

Maximum allowable pressure PS 2bar
Maximum fluid viscosity 25cSt (mm²/s)
Ambient temperature: from -10°C to +80°C according to the coil
Preferred mounting position with vertical coil above



OPTIONS:  US certified coils



Version with closed vent

| CODE ② | Connection G ISO 228 | Orifice mm | Kv m³/h | Differential pressure bar | | | Nominal power | | | Coil | | Seal ① | Temp. range °C |
|----------------|----------------------------|---------------|------------|------------------------------|-----|-----|---------------|---------------|------------|--------|-------|------------|----------------------|
| | | | | Min | Max | | AC Inrush | VA Holding | DC Watt | Series | Width | | |
| | | | | | AC | DC | | | | | | | |
| E150PS75///... | - | 7.5 | 0.7 | 0 | 0.2 | 0.2 | 12 | 8 | 6.5 | 3 | 22 | SILICONE=S | <+95°C |
| E150PS75/6/... | 1/4" | | | 0 | 0.2 | 0.2 | | | | | | | |
| D150PS75///... | - | | | 0 | - | 0.2 | | | | | | | |
| D150PS75/5/... | 1/4" | | | 0 | - | 0.2 | | | | | | | |

Version with open vent

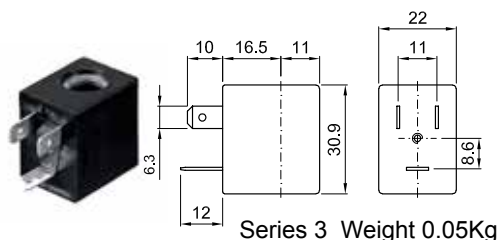
| CODE ② | Connection G ISO 228 | Orifice mm | Kv m³/h | Differential pressure bar | | | Nominal power | | | Coil | | Seal ① | Temp. range °C |
|----------------|----------------------------|---------------|------------|------------------------------|-----|-----|---------------|---------------|------------|--------|-------|------------|----------------------|
| | | | | Min | Max | | AC Inrush | VA Holding | DC Watt | Series | Width | | |
| | | | | | AC | DC | | | | | | | |
| E150PS75/7/... | - | 7.5 | 0.7 | 0 | 0.2 | 0.2 | 12 | 8 | 6.5 | 3 | 22 | SILICONE=S | <+95°C |
| E150PS75/1/... | 1/4" | | | 0 | 0.2 | 0.2 | | | | | | | |
| D150PS75/4/... | - | | | 0 | - | 0.2 | | | | | | | |
| D150PS75/3/... | 1/4" | | | 0 | - | 0.2 | | | | | | | |

② Coil

Example: E150PS75/6/30B G1/4" inlet - Closed vent
Coil 24V 50/60Hz

| COILS ② | Alternating Current 50/60Hz (V) | | | | | | | Direct Current (V) | | | Electrical connection | Connectors |
|----------------------|------------------------------------|-----|-----|-----|------------|-----|-----|-----------------------|-----|-----|--------------------------|-------------------------|
| | 12 | 24 | 48 | 110 | 220 230 | 240 | 380 | 12 | 24 | 48 | | |
| Series 3 Width 22 | 30A | 30B | 30C | 30D | 30E | 30F | 30G | 300 | 301 | 302 | DIN 46244 | PG9 code 10348000 |

DESCRIPTION
 Class F insulation
 Voltage tolerance
 AC +15% -10%
 DC ± 10%
 Protection class
 IP65 with connector fitted
 IP00 without connector
 Continuous service ED100%

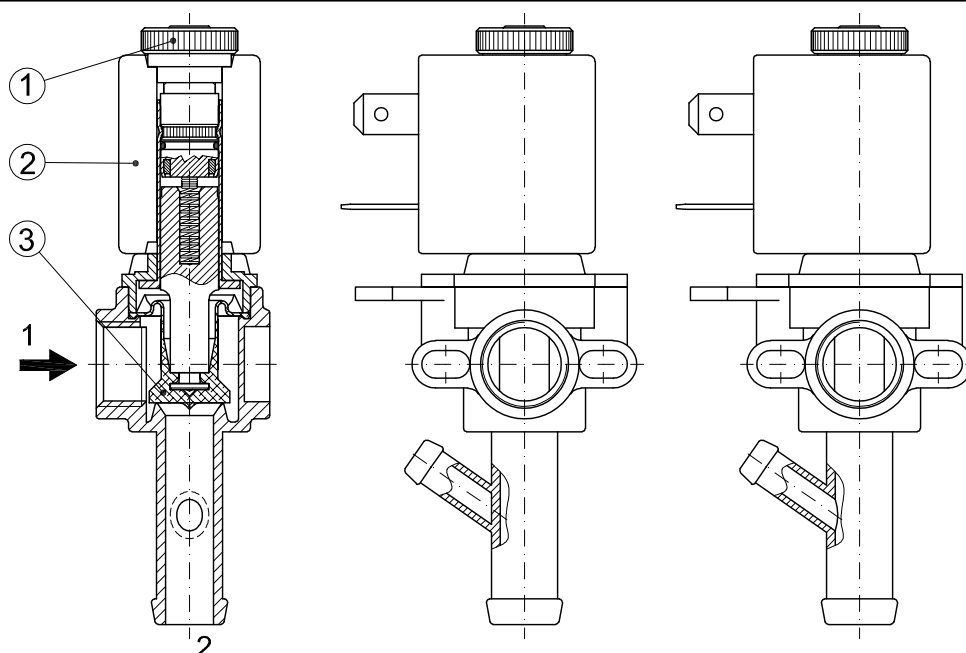


OPTIONS
 Class H insulation
 Cable attached
 Special coil voltage
 Special coil powers
 CE certified coils

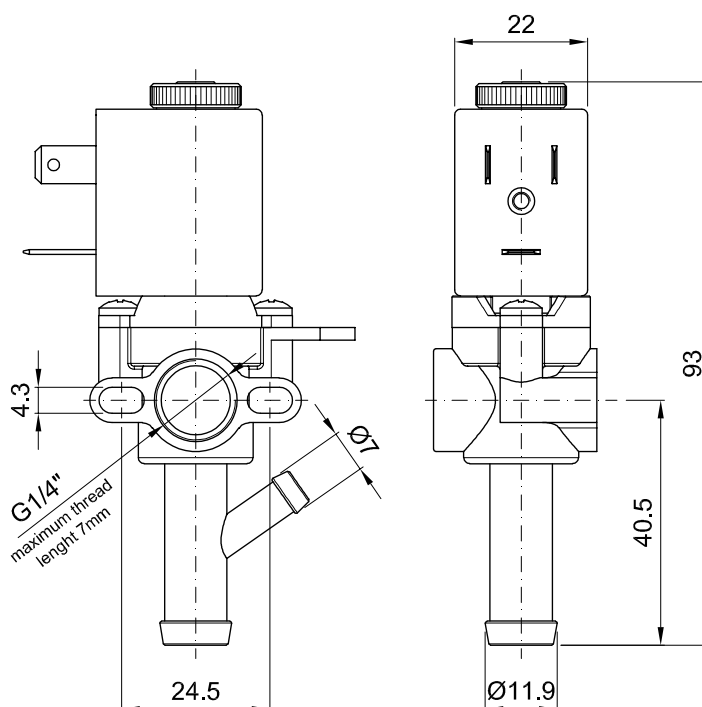
(for coil details see section 8)

SPARE PARTS LIST

1. Coil fixing nut
2. Coil
3. Diaphragm



OVERALL DIMENSION



Weight = 0.1Kg