

DESCRIPTION

Solenoid valve 2 way normally closed
direct acting with dry armature.
No metal parts in contact with the media.

CONSTRUCTION

Body	Acetal copolymer
Armature tube	AISI 303
Plunger and core	AISI 430FR
Springs	AISI 302
Seal material	SILICONE - FPM

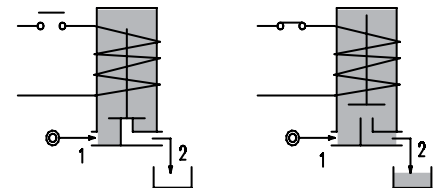
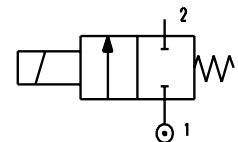


2

FEATURES

Maximum allowable pressure PS 1.5bar
Maximum fluid viscosity 25cSt (mm²/s)
Ambient temperature: from -10°C to +80°C according to the coil
Mounting position with vertical coil above

OPTIONS:  US certified coils



CODE ① ②	Connection G ISO 228	Orifice mm	Kv m³/h	Differential pressure bar		Nominal power			Coil		Seal ①	Temp. range °C
				Inlet	Outlet	AC Inrush	VA Holding	DC Watt	Series	Width		
Version with closed vent											SILICONE=S FPM=V	<+95°C
E160S...10/1/...	1/2"	10	1.7	0.5	0.1	20	15	10	2	30		
Version with open vent												
E160S...10///...	1/2"	10	1.7	0.5	0.1	20	15	10	2	30		

① Seal

② Coil

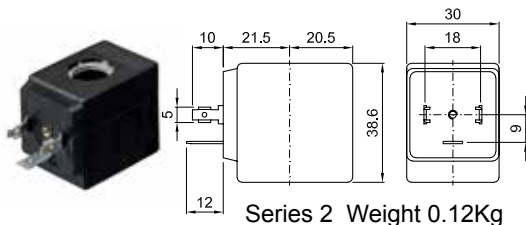
Example: E160SS10/1/20E Closed vent - Coil 230V 50/60Hz

COILS ②	Alternating Current 50/60Hz (V)							Direct Current (V)			Electrical connection	Connectors
	12	24	48	110	220 230	240	380	12	24	48		
Series 2 Width 30	20A	20B	20C	20D	20E	20F	20G	200	201	202	DIN 43650A	PG9 code 10349000

DESCRIPTION
 Class F insulation
 Voltage tolerance
 AC +15% -10%
 DC ± 10%
 Protection class
 IP65 with connector fitted
 IP00 without connector

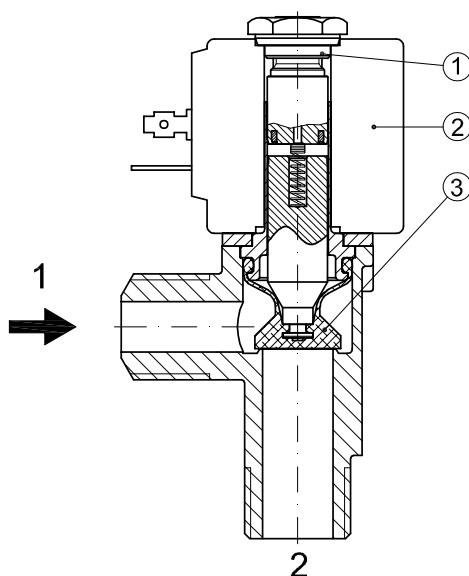
OPTIONS
 Cable attached
 Special coil voltage
 Special coil powers
 CE certified coils

(for coil details see section 8)

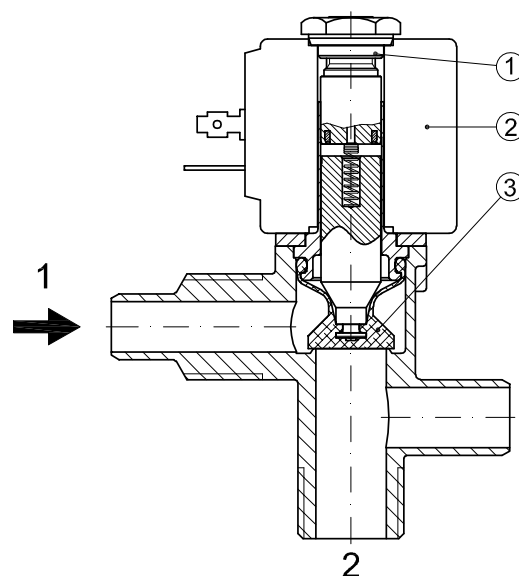


SPARE PARTS LIST

1. Coil fixing nut
2. Coil
3. Diaphragm

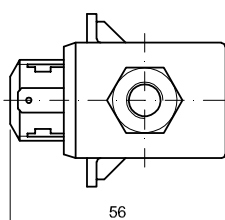
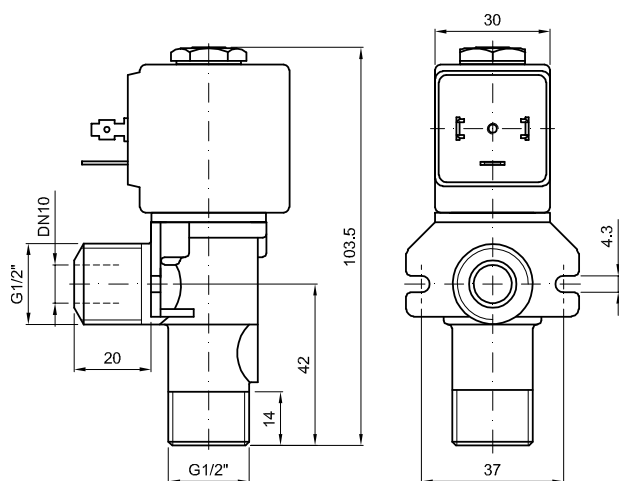


E160S...10/1/...
 Version with closed vent

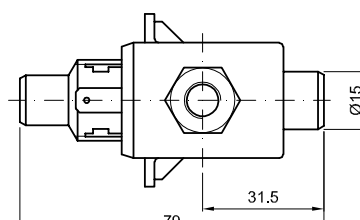
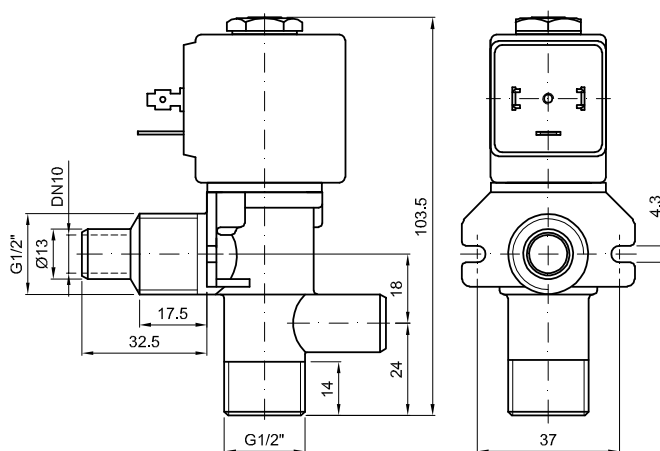


E160S...10///...
 Version with open vent

OVERALL DIMENSION



E160S...10/1/...
 Weight=0.22Kg



E160S...10///...
 Weight=0.24Kg