

## DESCRIPTION

Solenoid operated pinch valve with dry armature.  
The tube is the only part in contact with the fluid.  
The internal diameter determines the flow.  
Elimination of dirt traps.  
Fluid flow can be bi-directional.  
Use soft tube (not supplied) hardness 50°Sh A  $\pm 3^\circ$

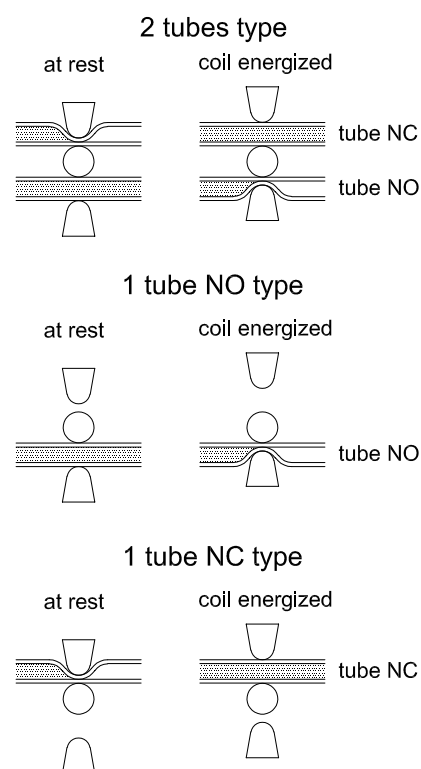
## CONSTRUCTION

Body	Anodized aluminium
Pinching device	Acetal copolymer
Armature tube	Nickel plated brass
Plunger and core	Stainless steel
Springs	Stainless steel
Flange	Stainless steel

## FEATURES

Ambient temperature:  $-10^\circ\text{C}$   $+40^\circ\text{C}$   
Maximum fluid viscosity 65cSt ( $\text{mm}^2/\text{s}$ )  
Preferred mounting position with vertical coil above

**NOTE:** the right operating of the solenoid valve depends from a correct choice of the soft tube



6

CODE ①	Tube		Pinch force gr	Version	Coil		Nominal power W
	$\text{Ø}_{\text{ext}}^{+0.2/-0}$	Min. wall thickness mm			Width	Series	
D730/30/...	3	0.7	250	2 tubes 1NC-1NO	16	6	8
D710/30/...	3	0.4	250	1 tube NC	16	6	4
D720/30/...	3	0.7	250	1 tube NO	16	6	4

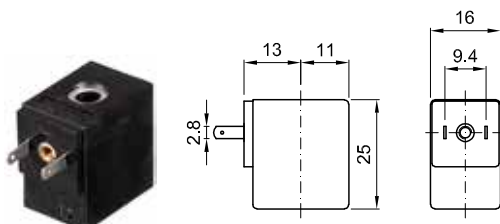
① Coil

Example: D730/30/60048  
Version with 2 tubes 12V DC 8W ED25%

COILS	Direct Current				Electrical connection	Connectors
	12V		24V			
	4W	8W	4W	8W		
Series 6 Width 16 Code ②	60014	60048	60114	60148	AMP 2.8x0.5	PG7 code 10348040

**DESCRIPTION**  
 Class F insulation  
 Voltage tolerance  $\pm 5\%$   
 Protection class  
 IP65 with connector fitted  
 IP00 without connector  
 Continuous service ED100%

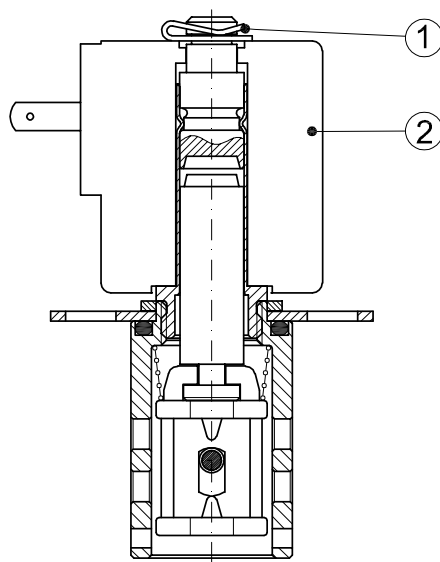
**OPTIONS**  
 Cable attached  
 Special coil voltage  
 Special coil powers



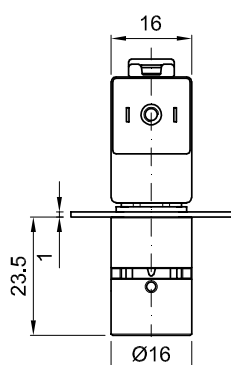
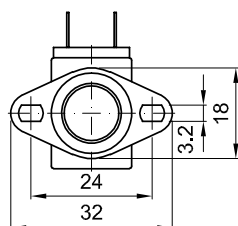
Series 6 Weight 0.02Kg

## SPARE PARTS LIST

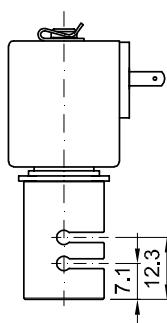
1. Clip
2. Coil



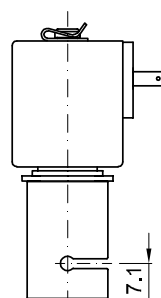
## OVERALL DIMENSION



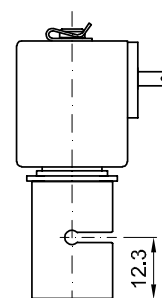
D730  
2 tubes



D720  
1 tube NO



D710  
1 tube NC



Weight = 0.04Kg