

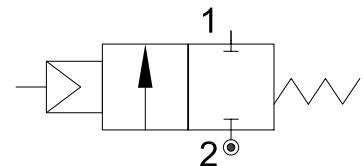
DESCRIPTION

2 way bi-stable (double acting) pneumatically operated valve.
Modular assembling.

PRESENTATION

- Best choice for fluid mixing
- Flanged connection modularity
- Water hammer effect prevention
- Protected visual position indicator
- PTFE sealing pack
- Maintenance free sealing pack
- Normally open version available on request
- Pilot thread: G1/8"
- Universal mounting position

USE: Packaging, Drinks Filling Machinery, Textile printing,
Pharmacy & Medical Equipment, Chemical industry,
Foaming Equipment, Water/sewage Disposal



5

CONNECTION: Threaded (BSP, NPT)

CONNECTION KIT: Inlet plate (plate+OR+screws+nuts)	cod.14913000
Modules connection kit (OR+screws+nuts)	cod.14914000
End plate (plate+OR+screws+nuts)	cod.14915000

VALVE FEATURES

Fluid Pressure	Up to max 14bar
Control Pressure	from 4.5bar (see table)
Control Fluid	Neutral gas, Air
Body material	Stainless steel AISI 316
Sealing	PTFE
Actuator Material	AISI 304
Actuator Size	50mm
Fluids	Water, Alcohol, Oils, Fuels, Steam, Natural gases or Liquids, Organic solvents, Acids and Lyes
Fluid viscosity	Max 600cSt (mm ² /s)
Fluid temperature	-10°C to +180°C
Ambient temperature	-10°C to +80°C
Control Type	Double acting

CODE	DN (ØD)	Pilot Pressure	Max Pressure	A	L	K	2-ØF	E	ØD	Ød	G	SW
	mm	bar	bar	mm	mm	mm	mm	mm	mm	mm		mm
PM150DGW15/V	DN20	4.5	0 - 14	153	76	35	8.5	50	25	18	1/2"	27
PM150FGW25/V	DN25	4.5	0 - 8	153	90	46	8.5	57	32	24	1"	39

