

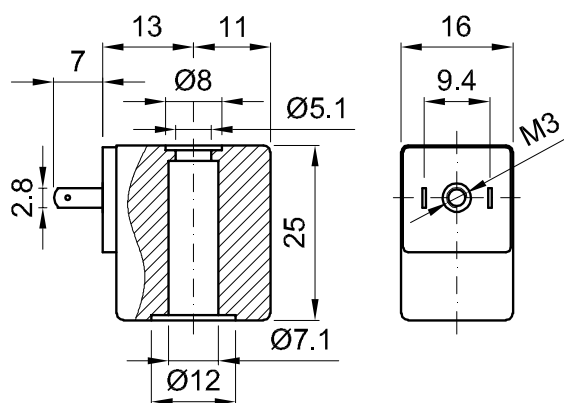
DESCRIPTION

Encapsulated coil incorporating the magnetic circuit.
Fixing by means of a central nut.
Electrical connection according to AMP 2.8x0.5.

CONSTRUCTION

Encapsulation: Fibre-glass Nylon
Class F
Magnetic circuit Zinc-plated steel
Windings Copper covered with class H insulation

OPTIONS: Electrical connection through cable
Special powers and voltages
Self-extinguish



CODE Class F insulation	Direct Current Voltage (V)	Power ① Direct Current (W)	Voltage tolerance	Connector	Service ED
60014	12	4	±5%	10348040	100%
60048	12	8			25%
60114	24	4			100%
60148	24	8			25%
60012	12	2			100%
60112	24	2			100%

① Considering nominal voltage and an ambient temperature of 20°C