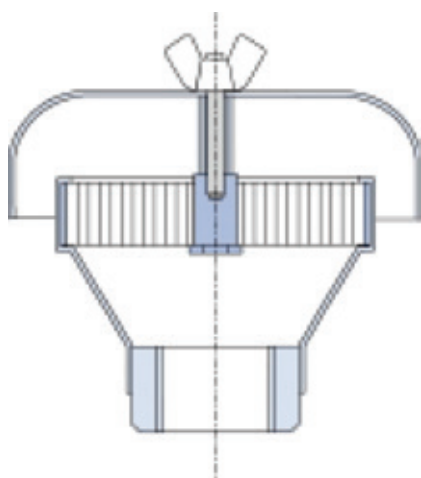


## ANDERSON GREENWOOD AMAL NP/NPC FLAME ARRESTERS

End-of-line deflagration flame arresters designed to prevent the propagation of a flame with sub-sonic speed



### FEATURES

- Weather cowled or non-cowled model variants available.
- Fabricated design.
- Lightweight construction.
- Advanced crimped stainless steel element construction as standard. Other materials available.
- Independently tested and certified.
- Manufactured to ISO 9001:2008.

### GENERAL APPLICATION

The NP/NPC end-of-line flame arresters are mounted on tanks or on the end of discharge pipes to stop flames entering the process. With their light weight, low cost body they are ideal for small breather applications where a flame arrester is required.

### TECHNICAL DATA

Materials:	Carbon steel, stainless steel
Sizes:	DN 6 to 80 (1/8" to 3")
Connections:	Threaded or plain
Temperature range:	-20° to +60°C [-4° to +140°F]
Gas groups:	IIA, IIB1, IIB2, IIB3, IIB, IIC
Certification:	ATEX Directive 94/9/EC

# ANDERSON GREENWOOD AMAL NP/NPC FLAME ARRESTERS

## MATERIALS AND CONNECTION OPTIONS

### Materials

Carbon steel and stainless steel.

### Connection pipe size

Threaded DN 6 to 50 (1/8" to 2")

Plain DN 32 (1 1/4")

DN 40 (1 1/2")

DN 80 (3")

### NOTE

Accessories, special materials and connections are available on request.

### Gas groups

- IIA
- IIB1
- IIB2
- IIB3
- IIB
- IIC

## SELECTION GUIDE

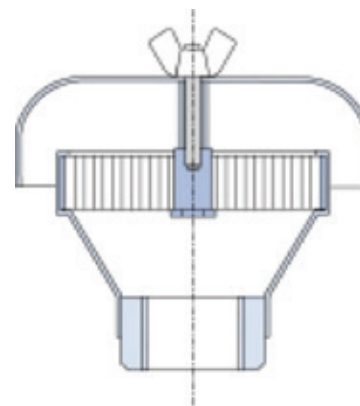
Example:	NP	50	NP	100	19	80	S3	S3
<b>Model</b>								
<b>NP</b>								
<b>NPC</b>								
<b>Connection diameter, mm (in)</b>								
<b>Threaded</b>								
DN 6 to 50 (1/8" to 2")								
<b>Plain</b>								
DN 32 (1 1/4")								
DN 40 (1 1/2")								
DN 80 (3")								
<b>Element code</b>								
<b>NP</b>								
<b>NC</b>								
<b>Element diameter, mm (in)</b>								
DN 50 (2")								
DN 80 (3")								
DN 100 (4")								
<b>Element width, mm (in)</b>								
<b>19</b> 19 mm (0.75")								
<b>Cell height, mm (in)</b>								
<b>80</b> 0.80 mm (0.032")								
<b>60</b> 0.60 mm (0.024")								
<b>45</b> 0.45 mm (0.018")								
<b>15</b> 0.15 mm (0.006")								
<b>Element material</b>								
<b>S3</b> Stainless steel								
<b>C</b> Carbon steel								
<b>Body material</b>								
<b>S3</b> Stainless steel								
<b>C</b> Carbon steel								

## NOTES

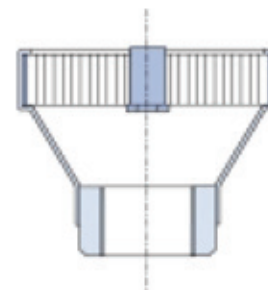
All sizing and selection must be conducted by the factory.

Standard elements are double the pipe size.

NPC SCREWED (NC VERSION)



NP SCREWED (NP VERSION)



Neither Emerson, Emerson Automation Solutions, nor any of their affiliated entities assumes responsibility for the selection, use or maintenance of any product. Responsibility for proper selection, use, and maintenance of any product remains solely with the purchaser and end user.

Anderson Greenwood is a mark owned by one of the companies in the Emerson Automation Solutions business unit of Emerson Electric Co. Emerson Automation Solutions, Emerson and the Emerson logo are trademarks and service marks of Emerson Electric Co. All other marks are the property of their respective owners.

The contents of this publication are presented for informational purposes only, and while every effort has been made to ensure their accuracy, they are not to be construed as warranties or guarantees, express or implied, regarding the products or services described herein or their use or applicability. All sales are governed by our terms and conditions, which are available upon request. We reserve the right to modify or improve the designs or specifications of such products at any time without notice.