

Manifold Accessories

Seal Pot, Key, Orifice Plate & Vent Purge Blocks

A range of accessories to complement the modular mounting system.

P - Orifice plate

To regulate purge fluid flow, a purge orifice nipple (orifice plate) is available to fit 6mm, 10 mm and 3/8" OD tubing. The orifice size is supplied as requested.

Each orifice plate has a tag plate from 1 mm thick 316 SS with a tag number and orifice size information provided.

Mesc SPE: 60.95.90/

SP - Seal pots^[1]

For systems requiring an open seal, i.e. high temperature, toxic or corrosive service, the Seal Pot, used with a seal fluid immiscible in the process medium, will provide a barrier for the manifold and instrument.

If the instrument is located below the orifice plate, a seal fluid with a higher specific gravity than the process medium is required. If the instrument is located above the orifice plate, a seal fluid with a lower specific gravity should be used.

The seal pot has a capacity of approximately 50 cc and is equipped with an integral vent valve. The maximum working pressure is 413 bar at 38°C; maximum working temperature 450°C. Connections are G1/4" parallel threaded.

Mesc SPE: 60.98.70/510 or 610

K - Anti-tamper key

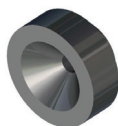
A removable T-bar key can be supplied to prevent unauthorized operation of valves. The Anti-tamper bonnet is fitted as standard to all vent and equalize valves on modular mount manifolds.

Mesc SPE: 60.98.70.905.1

System Accessories - Model Coding

Model No.	Description
SP.2.HIS	316 SS seal pot
P.06.S	316 SS orifice plate for 6 mm OD tube
P.10.S	316 SS orifice plate for 10 mm OD tube
P.38.S	316 SS orifice plate for 3/8" OD tube

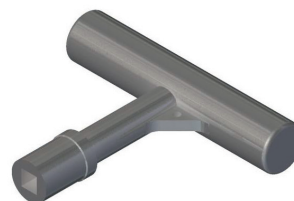
P



SP



K



NOTE

1. Tube fittings for Seal Pots, suffix to part number:

Gyrolok: GY-M (10 mm OD); GY-I (3/8" OD)

Swagelok: SK-M (10 mm OD); SK-I (3/8" OD)

SP, K, P, VPB

Manifold Accessories

VPB - Vent purge blocks (option - consult factory)

There are two vent purge blocks, the double VPB for differential pressure applications and the single VPB for static pressure applications. Purge blocks have two main uses: firstly for purge protection of the instrument using a purge medium to keep the process away from the instrument by maintaining a slightly higher pressure than the process medium. Secondly, they provide a sensing medium for differential pressure instruments on level indication service. This uses the 'dip tube' method of sensing the variation in back pressures as the tank contents increase or decrease. Both VPBs are available in stainless steel and have G $\frac{1}{4}$ parallel threaded connections.

The purge block outlet(s) are fitted with a soft-seated non-return valve and the inlet has an integral filter. An additional purge orifice nipple can be fitted to the purge block inlet providing a fixed restrictor to regulate purge flow. This can be checked via the vent/calibrate valve. The maximum working pressure is 413 bar at 38°C; maximum working temperature 200°C. Mesc SPE: 60.98.70/200 or 300

VPBVIS-D



System Accessories - Model Coding

Model No.	Description
VPBVIS-S	316 SS single vent purge block
VPBVIS-D	316 SS double vent purge block (as shown)

NOTE

Tube fittings for Vent Purge Blocks, suffix to part number:

Gyrolok: GY-M (10 mm OD); GY-I ($\frac{3}{8}$ " OD)

Swagelok: SK-M (10 mm OD); SK-I ($\frac{3}{8}$ " OD)