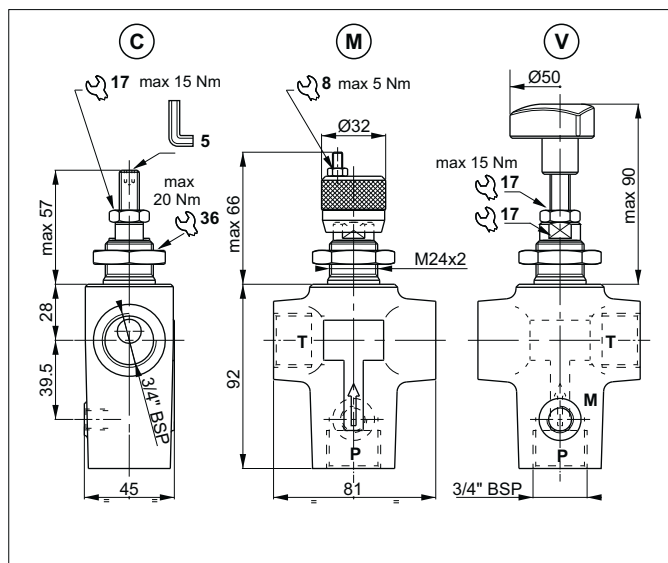


PILOT OPERATED PRESSURE RELIEF VALVES - IN-LINE MOUNTING



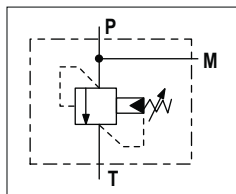
The direct acting relief valve with CMP30 cartridge limits the pressure in the hydraulic circuit.

Slight leakage is tolerated for this type of valve.

It raises the safety level by making it impossible for the plant operators to set a higher pressure rating, than that specified in the catalogue. It has a pack spring with a mechanical stop.

It has a manganese phosphate coated cast iron body. The cartridge is in galvanized steel.

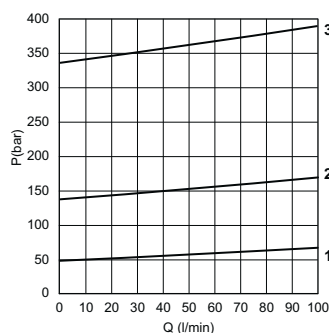
HYDRAULIC SYMBOL



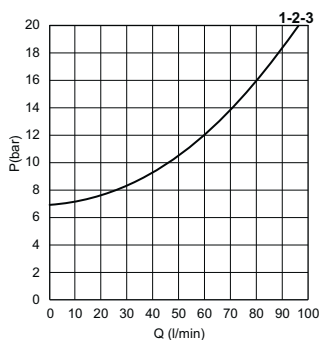
HYDRAULIC FEATURES

Max. opening pressure	350 bar
Setting range:	
Spring 1 (white)	max 50 bar
Spring 2 (yellow)	max 140 bar
Spring 3 (green)	max 350 bar
Max. Flow	100 l/min
Hydraulic fluid	DIN 51524 Mineral oils
Fluid viscosity	10 ÷ 500 mm ² /s
Fluid temperature	-25°C ÷ 75°C
Ambient temperature	-25°C ÷ 60°C
Max. contamin. level class with filter	ISO 4406:1999 - class 19/17/14
Weight	1.4 kg

PRESSURE-FLOW RATE



MIN.SETTING PRESSURE



1 = VMP30.1.. - 2 = VMP30.2.. - 3 = VMP30.3..

Fluid used: mineral based oil with viscosity 46 mm²/s at 40°C.

The minimum permissible setting pressure depending on the spring: see curves.

ORDERING CODE

