

MBK-45

MONOBLOCK VALVE FLOW LIQUIDS

GENERAL FEATURES

Damage to the sealing surfaces can occur for the following reasons:

- During closing time, due to solid particles are trapped between the ball and ring cause scrating on the surface of ball and/or seat.
- Corrosion in seat rings
- Deformation of the seat ring due to overheating.

When opening and closing the valve, apply force in the direction of the arrow indicated on the arm. Do not continue to apply force when the arm is compliant with the stopper pin. If the valve does not open and close with a suitable shut-off torque, do not force the valve using a jimmy or similar device to increase the shut-off torque. This can increase irreparable damage to the valve parts.

Attention:

Avoid physical intervention from the outside to the valve body without precautions for accidental closure.

Avoid sudden rapid on-offs to prevent the formation of water hammer in ball valves.

Important

Open and close the valve once a week with the aim of preventing the formation of lime and sediment layer which may form on the surface of the sphere when the valve should wait for a long time in closed position in the installation.

Advantages

- Lightweight - Monoblock Design
- Short Flange Distance
- Space-Saving
- Easy Installation
- Universal Application

Installation:

Can be install in every direction.

Application Areas:

- On cold-hot water pipelines
- Natural gas, LPG-LNG, Fuel-Oil
- Compressed Air
- Ship manufacturing sector
- Storage facilities

TECHNICAL SPECIFICATION

Connection	Flanged
Gasket	Water: EPDM
	Gas: NBR
Temp. Range	-40/+110°C
Pressure Class	PN16

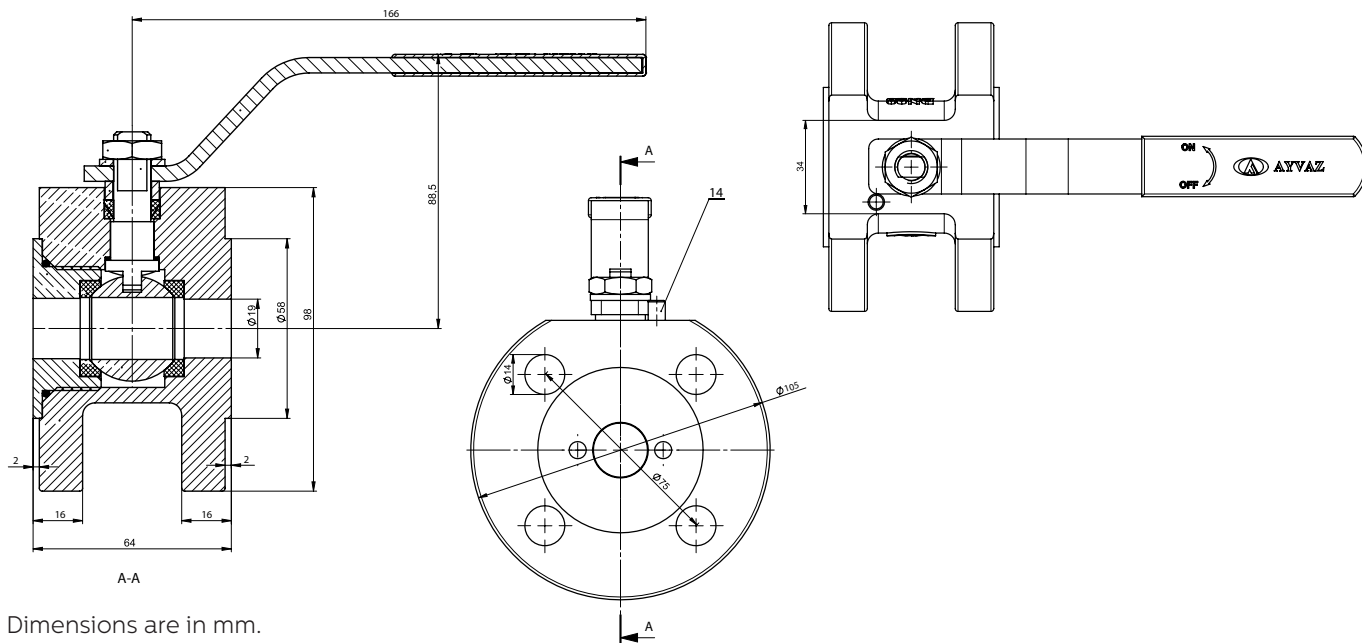
DIMENSIONS (mm)

Diameter(DN)	20	25
--------------	----	----

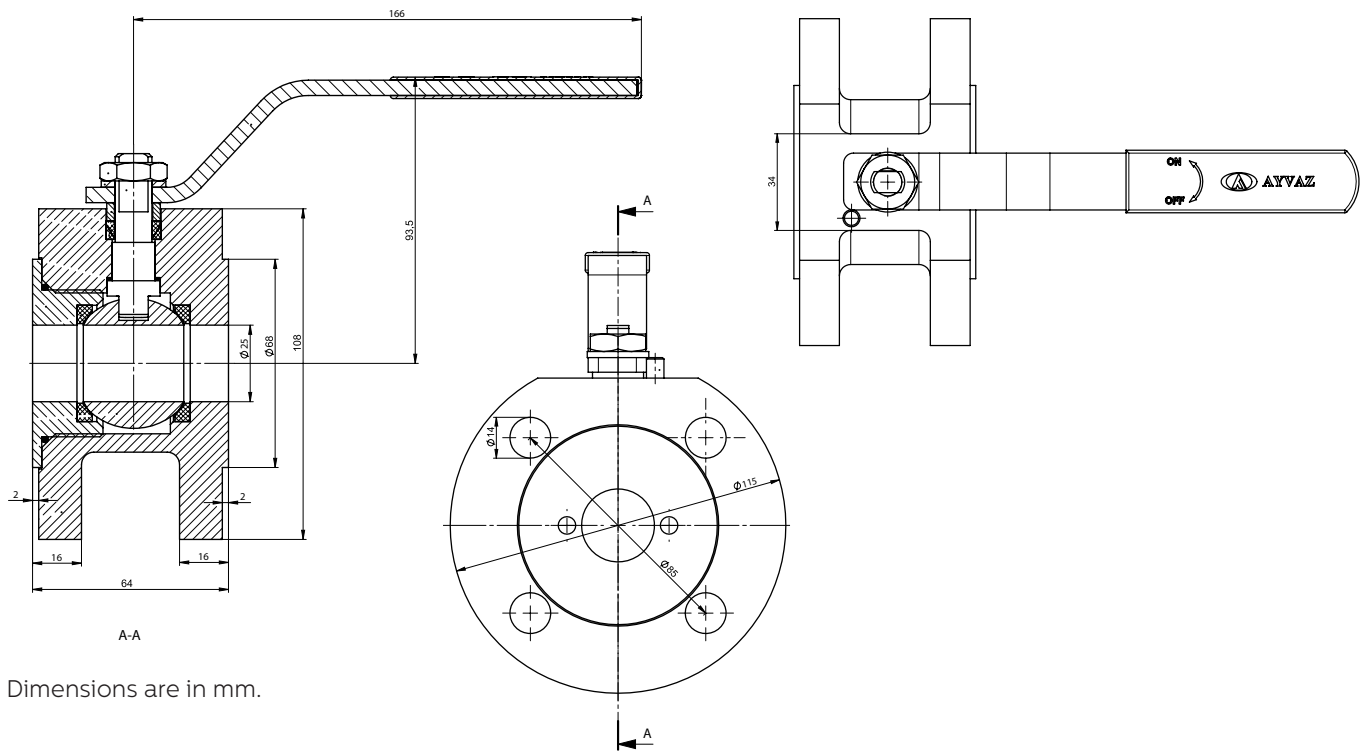
Factor	RISK	SOLUTION
Maximum and minimum temp.	Exceeding the temperature limits	The end user should avoid exceeding the limit specified in the use and maintenance manual.
Corrosion	Leak as a result of corrosion on the sealing surfaces. Decrease in working life.	Avoid process fluids containing corrosive particle and wastes which cam damage the valve sealing.
Shock	Breaking	This should be avoided or prevented by the end user. Steamtraps must be installed where necessary to prevent the water hammer.
	Damage to pressurized parts due to water hammer.	
Thermal Shock	Different thermal expansion	This should be avoided or prevented by the end user.

MBK-45 MONOBLOCK VALVE FLOW LIQUIDS

DN20 TECHNICAL SPECIFICATIONS

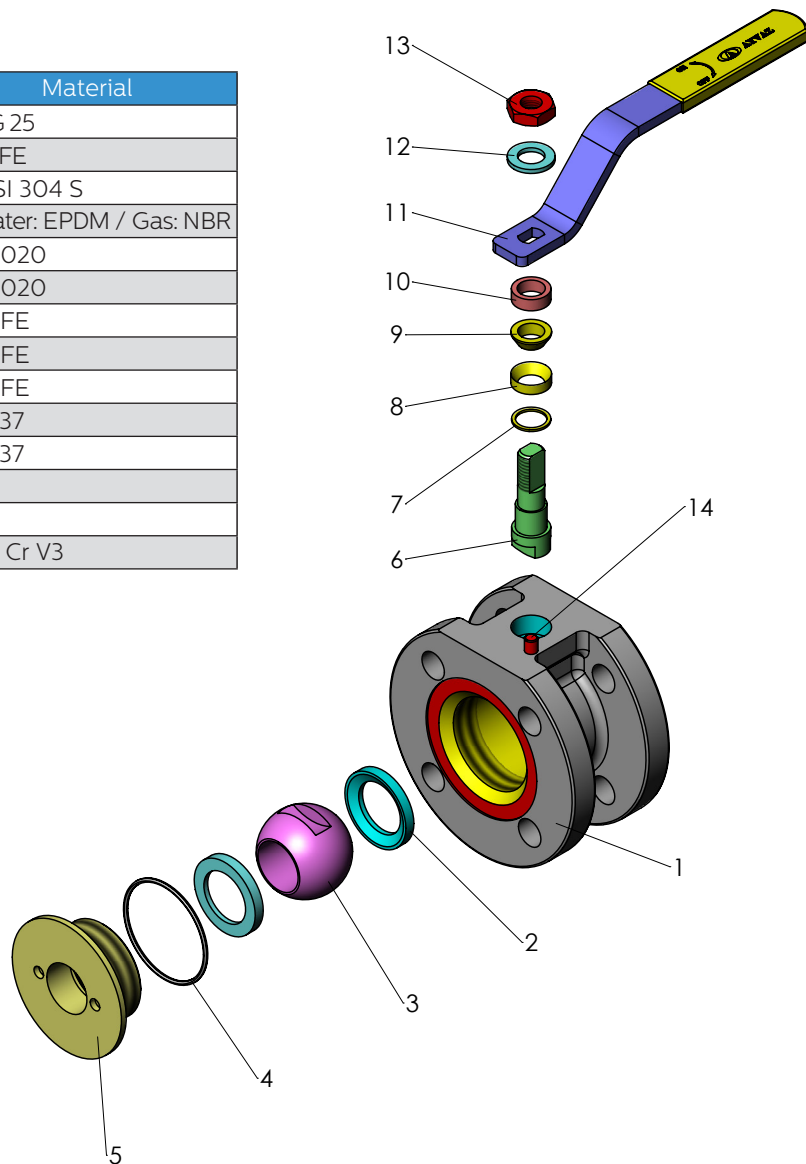


DN25 TECHNICAL SPECIFICATIONS



MBK-45 MONOBLOCK VALVE FLOW LIQUIDS

No	Part	Material
1	Body	GG 25
2	Ball Bearing	PTFE
3	Ball	AISI 304 S
4	Cover O-ring	Water: EPDM / Gas: NBR
5	Cover	Ç 1020
6	Ball Motion Stem	Ç 1020
7	Stem Gasket Bottom	PTFE
8	Stem Gasket Top	PTFE
9	Stem Gasket Top 2	PTFE
10	Pressure Bursh	St 37
11	Handle	St 37
12	Rondela Spring	
13	Nut	
14	Pin	115 Cr V3



HEAD OFFICE - FACTORY

Atatürk Sanayi Bölgesi Hadımköy Mahallesi Mustafa İnan Caddesi No: 44 Arnavutköy - İSTANBUL
Tel: +90 212 771 01 45 (pbx) | Fax: +90 212 771 47 27
info@ayvaz.com | www.ayvaz.com

Cona
Caserta/Italy
Tel: +39 0823 187 3988
rmolaro@ayvaz.com

Ayvaz Russia
Moscow/Russia
Tel: +74959951728
ayvazrus@ayvaz.com

Ayvaz Germany
Viernheim/Germany
Tel: +49 62046014399
germany@ayvaz.com

Ayvaz Ukraine
Kiev/Ukraine
Tel: +380 44 390 57 57
info@ayvaz.com.ua

Tricorr
Warsaw/Poland
Tel: +48-32-783-295-1
tricorr@tricorr.eu

Haci Ayvaz M.E.
Dubai/U.A.E
Tel: +971 563550822
+971 501306871
mideast@ayvaz.com

Ayvaz China
Cixi City/China
Tel: +86 0574 5897 3851
info@ayvazchina.com

Ayvaz Kazakhstan LLP
Almaty/Kazakhstan
Tel: +7 (727) 327 97 57
info_kz@ayvaz.com
www.ayvaz.kz

Ayvaz N
Isperih/Bulgaria
Tel: +359 8431 27 32
office@ayvaz-n.eu

Ayvaz Serbia
Belgrad/Serbia
Tel: +381 61 658 70 52
yakbiyik@ayvaz.com