



Your configured part number: C-250X0-FB

Features and Benefits

- **Low Cost Mounting:**
 - Flush bottom cylinder mounts directly onto a base plate with only two bolts
 - No mounting brackets or other hardware needed
- **Economical and Repairable:**
 - Up to 45% less expensive than tie-rod models
 - Lubrication not required
 - Two Centaur rear heads and a tube form an economical aluminum air reservoir
- **Low Breakaway:**
 - Proprietary sealing system eliminates stick-slip
 - Even after long idle periods, breakaway is consistent
 - Rod motion remains smooth throughout stroke
- **Built-In Bumpers Absorb Impact:**
 - Rubber bumpers eliminate metallic "clank" at stroke completion

Engineering Specifications

Pressure Rating: 150 PSI Air, 250 PSI Hydraulic

Temperature Range:

-40° F (-40° C) to 250° F (121° C),
up to 400° F (204° C) available

Lubrication: Not required

Materials:

Body: Hard Coated Aluminum

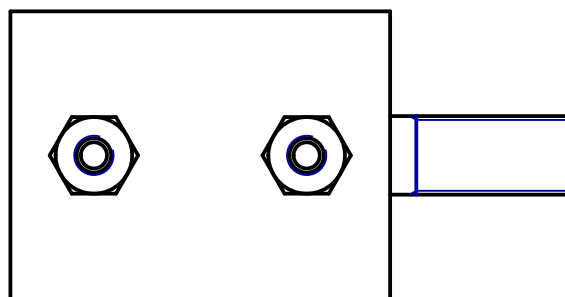
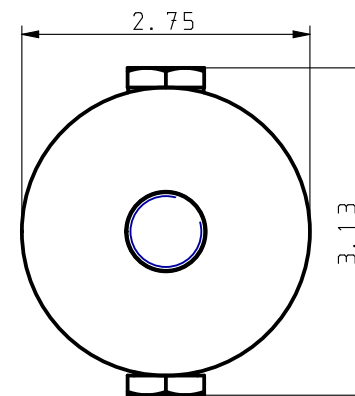
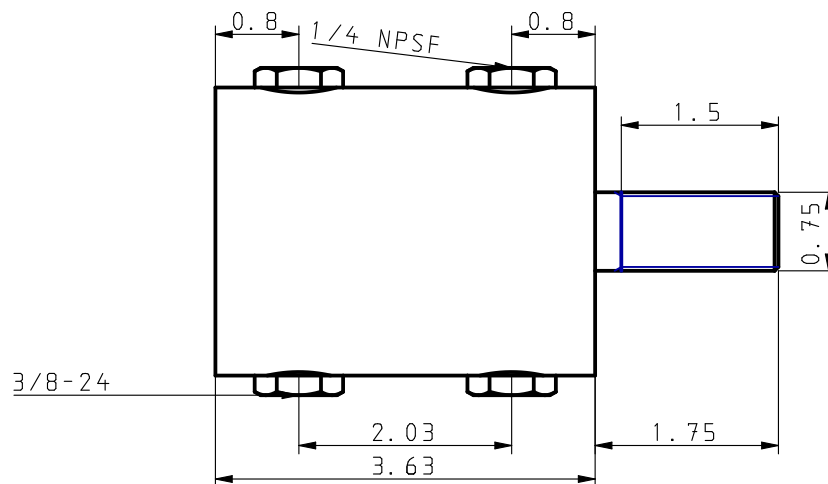
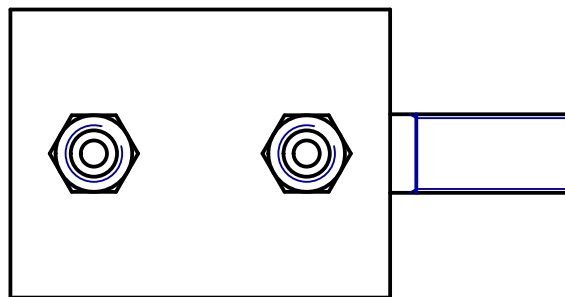
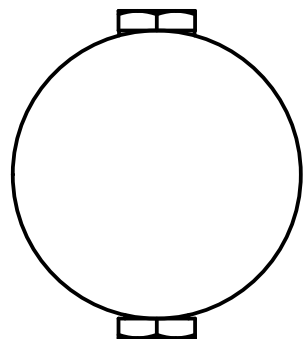
Rod Bearing: Oil-impregnated porous bronze

Service and Design Capabilities

- **Experienced application engineers are available to provide complete pneumatic circuit solutions**
- **A full line of products including air preparation, valves, actuators, and specialty components are available**
- **Fast shipping and helpful customer service**
- **Custom design capabilities to meet your needs**
- **Call (877) MEAD-USA (877-632-3872)**

Bimba Manufacturing Company
Monee, IL 60449-0068
Telephone: 708.534.8544
Toll Free: 800-44-BIMBA
Email: cs@bimba.com
www.bimba.com

Leaders in Actuation.



C-250X0-FB

THIS DRAWING CONTAINS PROPRIETARY DESIGNS AND/OR INFORMATION OF BIMBA MFG. CO. OR ITS SUBSIDIARIES AND IS NOT TO BE TRANSMITTED, REPRODUCED, USED OR DISCLOSED WITHOUT WRITTEN PERMISSION OF BIMBA MFG. CO. OR ITS SUBSIDIARIES. DESIGN REFLECTS OUR BEST ENGINEERING OPINION BASED ON WRITTEN APPLICATION SPECIFICATIONS RECEIVED. SUITABILITY OF A DESIGN FOR AN APPLICATION REQUIRES ANALYSIS AND/OR TESTS IN YOUR SPECIFIC SYSTEM.

Bimba is part of
IMI Precision
Engineering



Bimba Manufacturing Co.

Monee, IL. 60449
(800) 442-4622 www.bimba.com

PROPRIETARY DRAWING - Reference Only