



TRD Multi-Stage (MS Series)

Your configured part number: MSE-MX0-8.00x0.125-2S-KK1-NPT=.375

Additional accessories: (NO ACCESSORIES)

Features and Benefits

- **NFPA interchangeable:**

- All NFPA mounts and options available

- **Maintenance Free Performance:**

- Permanently lubricated with non-migratory PTFE based grease

- **Self-Alignment Feature-Floating Rod Bushing:**

- Reduces cylinder drag and erratic operation
- Reduces cylinder wear

- **Made to Order:**

- Each cylinder is made to order
- Customize each cylinder to best fit your application by choosing from our extensive list of options and specials
- 2, 3, 4 or 5 stage designs available

Engineering Specifications

Pressure Rating: 125 PSI Air

Temperature Range:

Std. (Carboxilated Nitrile) seals: -20° F (-29° C) to 200° F (90° C)

High Temp. (Fluorocarbon) seals: 0° F (-20° C) to 400° F (200° C)

Materials:

Rod: Chrome Plated High Strength Carbon Steel

Rod Bushing: Teflon Coated Cast Iron

Head/Cap/Retainer: Black Anodized 6061-T6 Aluminum

Tube: Clear Hard Coat Anodized 6063-T6 Aluminum

Tie Rods: Black Oxide Finish 100,000 PSI yield pre-stressed steel

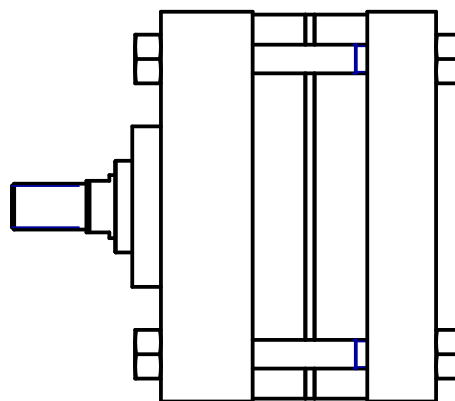
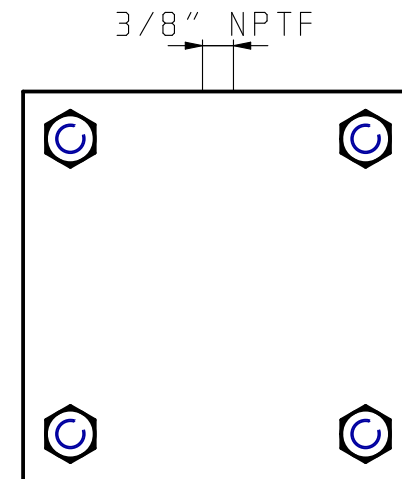
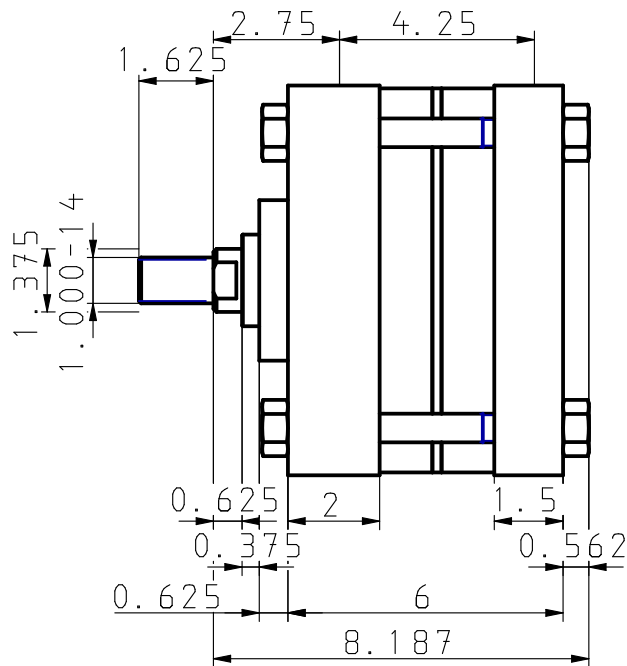
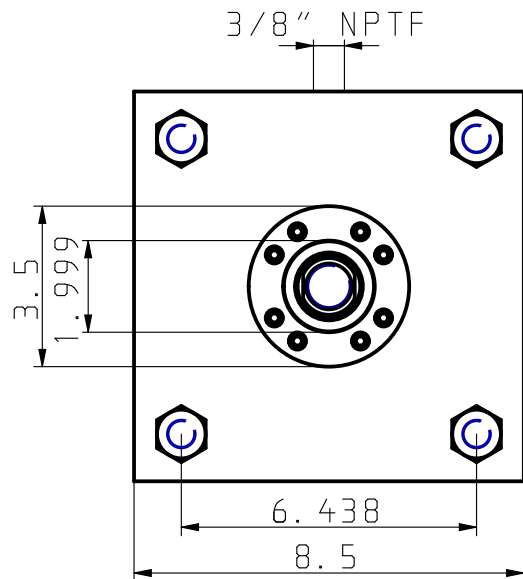
Piston: 6061-T6 Aluminum with PTFE wear band

Service and Design Capabilities

- **Most cylinders ship in 2 to 3 days**
- **RUSH Service available for most products**
- **8 bore sizes available, 1-1/2" to 8"**
- **Strokes from 1/2" to 12"**
- **Custom design capabilities for your needs**
- **Extensive list of standard and special options available**

Bimba Manufacturing Company
Monee, IL 60449-0068
Telephone: 708.534.8544
Toll Free: 800-44-BIMBA
Email: cs@bimba.com
www.bimba.com

Leaders in Actuation.



MSE-MX0-8.00x0.125-2S-KK1-NPT=.375
(NO ACCESSORIES)

THIS DRAWING CONTAINS PROPRIETARY DESIGNS AND/OR INFORMATION OF BIMBA MFG. CO. OR ITS SUBSIDIARIES AND IS NOT TO BE TRANSMITTED, REPRODUCED, USED OR DISCLOSED WITHOUT WRITTEN PERMISSION OF BIMBA MFG. CO. OR ITS SUBSIDIARIES. DESIGN REFLECTS OUR BEST ENGINEERING OPINION BASED ON WRITTEN APPLICATION SPECIFICATIONS RECEIVED. SUITABILITY OF A DESIGN FOR AN APPLICATION REQUIRES ANALYSIS AND/OR TESTS IN YOUR SPECIFIC SYSTEM.

Bimba is part of
IMI Precision
Engineering



Bimba Manufacturing Co.

Monee, IL. 60449
(800) 442-4622 www.bimba.com

PROPRIETARY DRAWING - Reference Only