



# Original Line® Plastic End Caps

**Your configured part number: PC-090.011-D**  
**Additional accessories: (NO ACCESSORIES)**

## Features and Benefits

- **Maintenance Free Performance:**
  - Lubed for life w/proprietary synthetic blend grease
  - Blue and Improved design doubles previous cylinder life
- **Corrosion Resistant:**
  - Acetal resin end caps
  - Stainless steel rods and bodies
  - Ideal for applications in environments requiring exposure to moisture, lubricants, and specific solvents
- **Low Breakaway:**
  - Inflatable, wear compensating, U-cup rod and piston seals
  - Breakaway slots on each end cap for fast seal inflation

## Engineering Specifications

**Pressure Rating:** 100 PSI

**Temperature Range:** 32° F to 160° F (0° C to 72° C)

Buna N seals: -20° F (29° C) to 200° F (90° C)

Fluoroelastomer seals for high temperatures (up to 400° F) available

Magnetic piston option: max. operating temp. is 185° F

### **Materials:**

Rod: 303 stainless steel

Body: 304 stainless steel

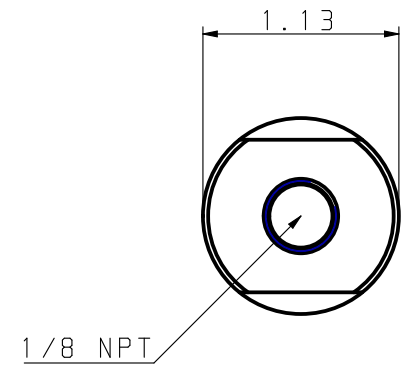
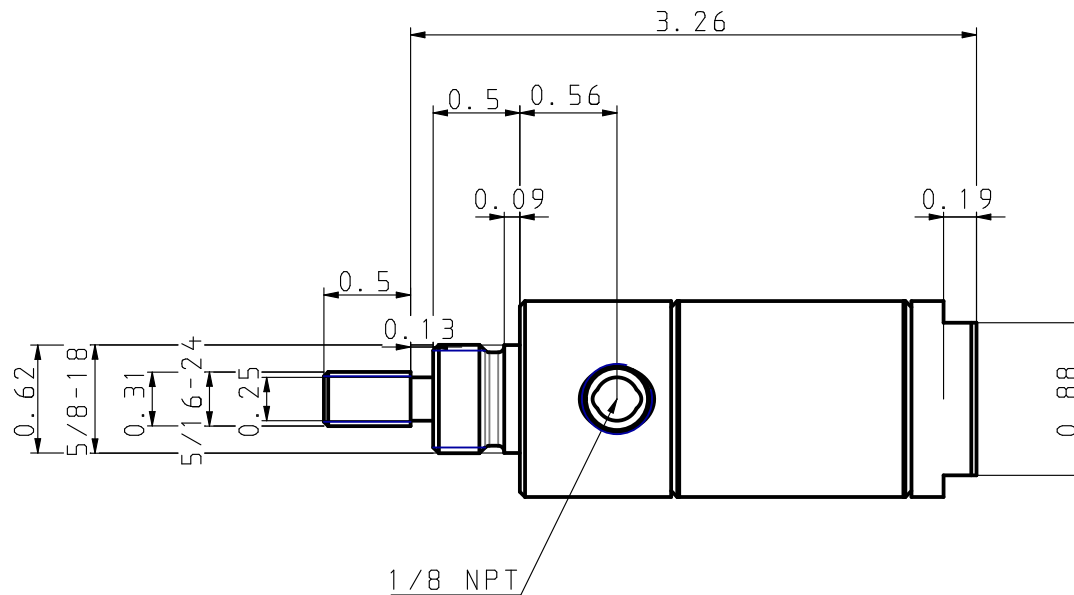
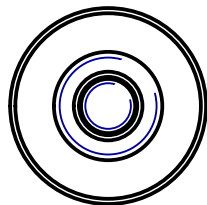
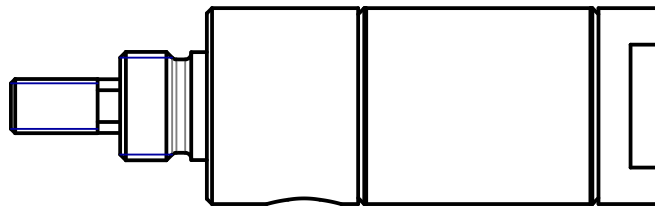
End Caps: Acetal resin

## Service and Design Capabilities

- **Catalog models available in 4 days or less**
- **Custom design capabilities for your needs**
- **Common modifications include:**
  - Custom rod threads/lengths
  - Customer logo/part# on cylinder body
  - Additional standard port sizes/locations
  - Special lubricants (FDA approved, etc.)
  - Anodized or nickel plated end caps
  - Clean room design with Krytox lubrication
  - Special spring forces

Bimba Manufacturing Company  
Monee, IL 60449-0068  
Telephone: 708.534.8544  
Toll Free: 800-44-BIMBA  
Email: [cs@bimba.com](mailto:cs@bimba.com)  
[www.bimba.com](http://www.bimba.com)

**Leaders in Actuation.**



PC-090.011-D  
(NO ACCESSORIES)

THIS DRAWING CONTAINS PROPRIETARY DESIGNS AND/OR INFORMATION OF BIMBA MFG. CO. OR ITS SUBSIDIARIES AND IS NOT TO BE TRANSMITTED, REPRODUCED, USED OR DISCLOSED WITHOUT WRITTEN PERMISSION OF BIMBA MFG. CO. OR ITS SUBSIDIARIES. DESIGN REFLECTS OUR BEST ENGINEERING OPINION BASED ON WRITTEN APPLICATION SPECIFICATIONS RECEIVED. SUITABILITY OF A DESIGN FOR AN APPLICATION REQUIRES ANALYSIS AND/OR TESTS IN YOUR SPECIFIC SYSTEM.

Bimba is part of  
**IMI** Precision  
Engineering



**Bimba Manufacturing Co.**

Monee, IL. 60449  
(800) 442-4622 [www.bimba.com](http://www.bimba.com)

PROPRIETARY DRAWING - Reference Only