



Original Line® All Stainless Steel

Your configured part number: SS-310.011-DW

Additional accessories: (NO ACCESSORIES)

Features and Benefits

• **Maintenance Free Performance:**

- Lubed for life w/food grade synthetic grease
- Blue and Improved design doubles previous cylinder life

• **Corrosion Resistant:**

- Stainless steel end caps, bodies, and rods
- Urethane rod wiper withstands harsh chemical solutions, rated up to 200° F
- Ideal for applications in environments requiring exposure to moisture, lubricants, and specific solvents
- Ideal for use in wash down applications

• **Low Breakaway:**

- Inflatable, wear compensating, U-cup rod and piston seals
- Breakaway slots on each end cap for fast seal inflation

Engineering Specifications

Pressure Rating: 250 PSI

Temperature Range:

Buna N seals: -20° F (29° C) to 200° F (90° C)

Fluoroelastomer seals for high temperatures (up to 400° F) available

Magnetic piston option: max. operating temp. is 185° F

Lubrication: Food grade synthetic grease

Materials:

Rod: 303 stainless steel

Body: 304 stainless steel

End Caps: 303 stainless steel

Rod & Pivot Bushings: PTFE based/resistant to common cleaning solutions

Service and Design Capabilities

• **Catalog models available in 4 days or less**

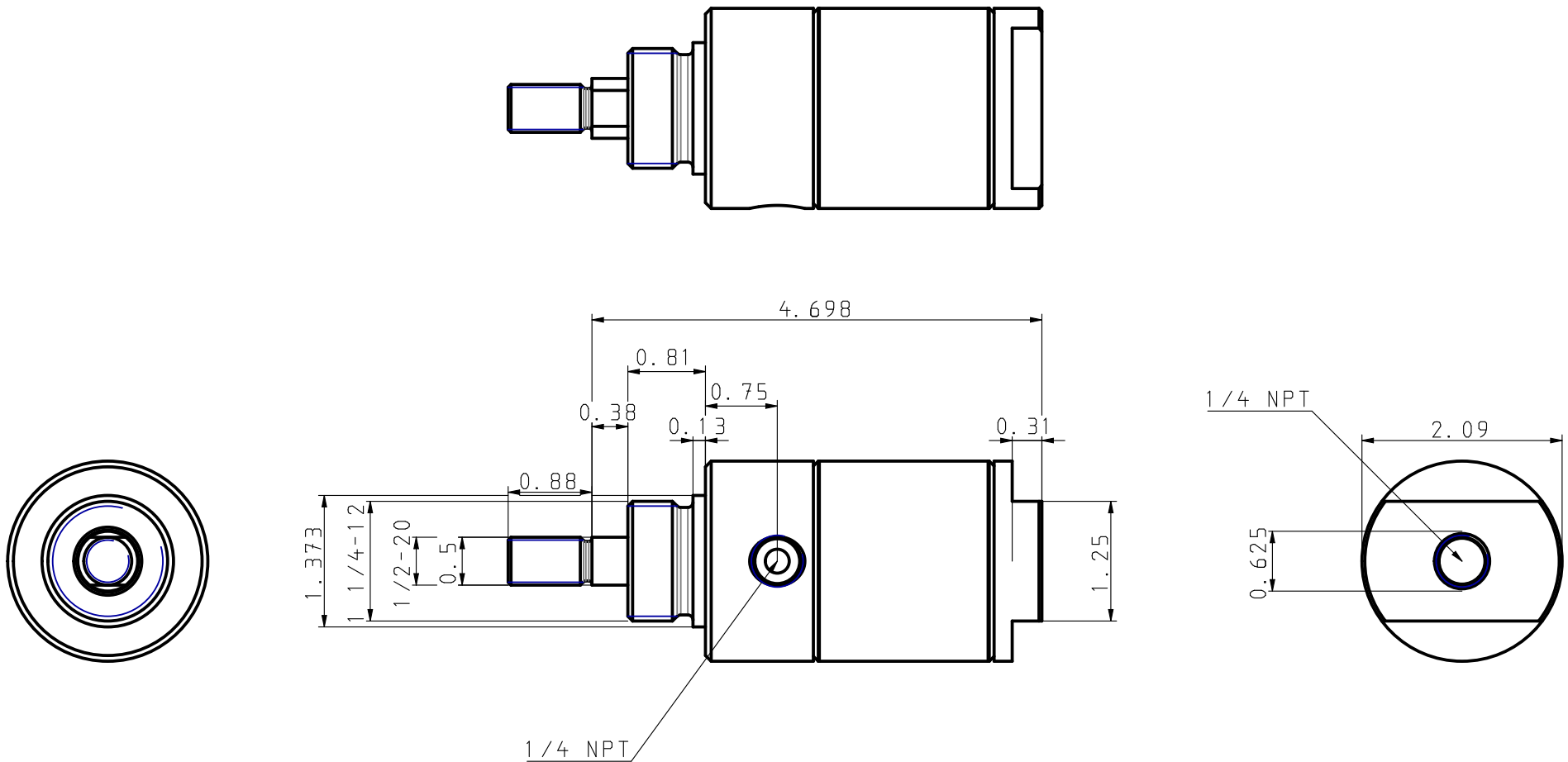
• **Custom design capabilities for your needs**

• **Common modifications include:**

- Custom rod threads/lengths
- Customer logo/part# on cylinder body
- Additional standard port sizes/locations
- Special lubricants (FDA approved, etc.)
- Anodized or nickel plated end caps
- Clean room design with Krytox lubrication
- Special spring forces

Leaders in Actuation.

Bimba Manufacturing Company
Monee, IL 60449-0068
Telephone: 708.534.8544
Toll Free: 800-44-BIMBA
Email: cs@bimba.com
www.bimba.com



SS-310.011-DW
(NO ACCESSORIES)

THIS DRAWING CONTAINS PROPRIETARY DESIGNS AND/OR INFORMATION OF BIMBA MFG. CO. OR ITS SUBSIDIARIES AND IS NOT TO BE TRANSMITTED, REPRODUCED, USED OR DISCLOSED WITHOUT WRITTEN PERMISSION OF BIMBA MFG. CO. OR ITS SUBSIDIARIES. DESIGN REFLECTS OUR BEST ENGINEERING OPINION BASED ON WRITTEN APPLICATION SPECIFICATIONS RECEIVED. SUITABILITY OF A DESIGN FOR AN APPLICATION REQUIRES ANALYSIS AND/OR TESTS IN YOUR SPECIFIC SYSTEM.

Bimba is part of
IMI Precision
Engineering



Bimba Manufacturing Co.

Monee, IL. 60449
(800) 442-4622 www.bimba.com

PROPRIETARY DRAWING - Reference Only