



Stainless Steel Flat-1 Cylinders

Your configured part number: SSFO-1250.25-8

Features and Benefits

- **Hygienic Design:**
 - Eliminates holes and crevices that can propagate bacterial growth
 - Easy to clean
- **IP69K Rated All Stainless Steel Design:**
 - Sealed outer body design prevents ingress of washdown chemicals and application matter
 - Superior corrosion resistance
- **Designed specifically for the Food and Beverage Industry:**
 - Food grade composite rod bushing and food grade lubricant
 - Hard chrome plated piston rod reduces wear on the rod seal

Engineering Specifications

Pressure Rating: 250 PSI

Temperature Range:

Standard Nitrile Seals: -20° F (29° C) to 200° F (90° C)

Low Temperature Seals: -40° F (-40° C) to 200° F (90° C)

High Temperature Seals: 0° F (-18° C) to 400° F (204° C)

Ingress Protection Rating: IP69K

Materials:

End Caps: Stainless Steel

Outer Body: Stainless Steel

Piston Rod: Hard Chrome Plated Stainless Steel

Lubrication: Food Grade Grease

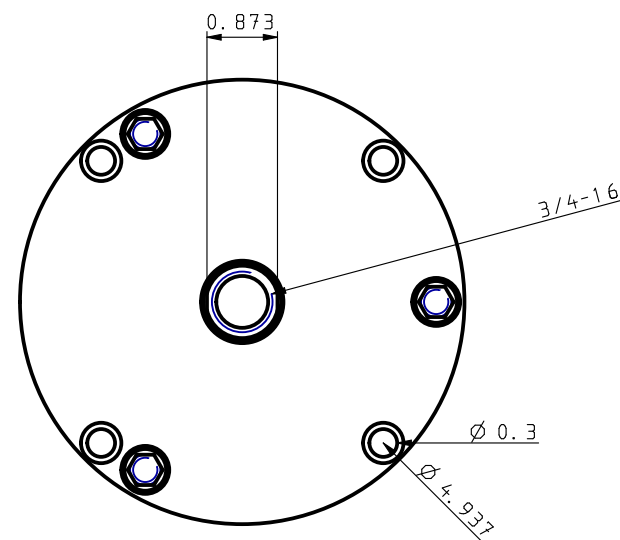
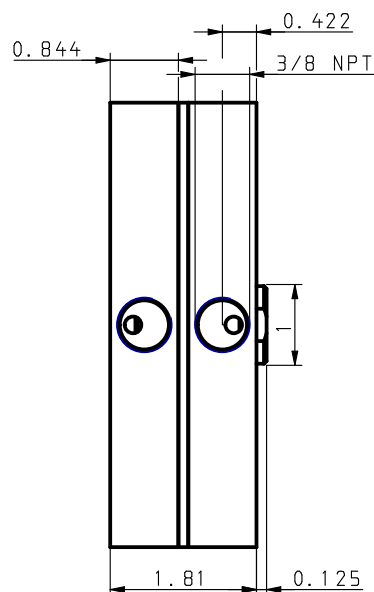
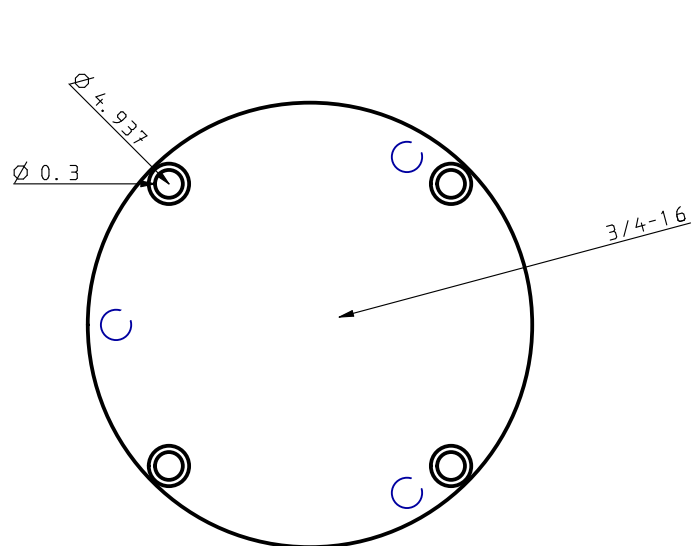
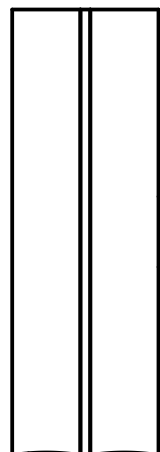
Rod Bushing: Food Grade Composite

Service and Design Capabilities

- **Catalog models available in 5 days or less**
- **Custom design capabilities for your needs**
- **Common design modifications include:**
 - Custom rod threads/lengths
 - Laser marked customer logo/part# on cylinder body
 - Non Rotating piston rod
 - Special spring forces
 - Special customer specified lubrication
 - Special Seal materials

Leaders in Actuation.

Bimba Manufacturing Company
Monee, IL 60449-0068
Telephone: 708.534.8544
Toll Free: 800-44-BIMBA
Email: cs@bimba.com
www.bimba.com



SSFO-1250.25-8

THIS DRAWING CONTAINS PROPRIETARY DESIGNS AND/OR INFORMATION OF BIMBA MFG. CO. OR ITS SUBSIDIARIES AND IS NOT TO BE TRANSMITTED, REPRODUCED, USED OR DISCLOSED WITHOUT WRITTEN PERMISSION OF BIMBA MFG. CO. OR ITS SUBSIDIARIES. DESIGN REFLECTS OUR BEST ENGINEERING OPINION BASED ON WRITTEN APPLICATION SPECIFICATIONS RECEIVED. SUITABILITY OF A DESIGN FOR AN APPLICATION REQUIRES ANALYSIS AND/OR TESTS IN YOUR SPECIFIC SYSTEM.

Bimba is part of
IMI Precision
Engineering



Bimba Manufacturing Co.

Monee, IL. 60449
(800) 442-4622 www.bimba.com

PROPRIETARY DRAWING - Reference Only