



# Stainless Steel Flat-1 Cylinders

**Your configured part number: SSFO-170.25-8**

## Features and Benefits

- **Hygienic Design:**
  - Eliminates holes and crevices that can propagate bacterial growth
  - Easy to clean
- **IP69K Rated All Stainless Steel Design:**
  - Sealed outer body design prevents ingress of washdown chemicals and application matter
  - Superior corrosion resistance
- **Designed specifically for the Food and Beverage Industry:**
  - Food grade composite rod bushing and food grade lubricant
  - Hard chrome plated piston rod reduces wear on the rod seal

## Engineering Specifications

**Pressure Rating:** 250 PSI

### **Temperature Range:**

Standard Nitrile Seals: -20° F (29° C) to 200° F (90° C)

Low Temperature Seals: -40° F (-40° C) to 200° F (90° C)

High Temperature Seals: 0° F (-18° C) to 400° F (204° C)

**Ingress Protection Rating:** IP69K

### **Materials:**

End Caps: Stainless Steel

Outer Body: Stainless Steel

Piston Rod: Hard Chrome Plated Stainless Steel

Lubrication: Food Grade Grease

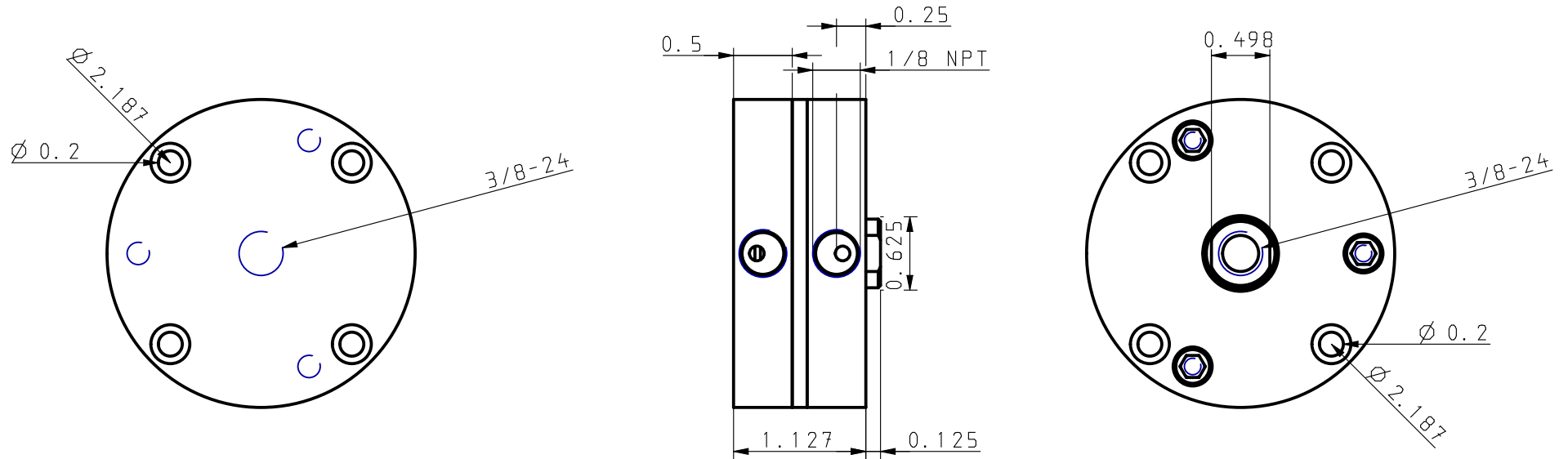
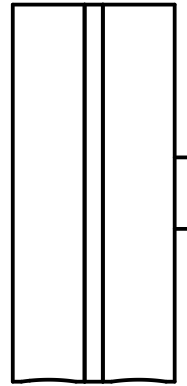
Rod Bushing: Food Grade Composite

## Service and Design Capabilities

- **Catalog models available in 5 days or less**
- **Custom design capabilities for your needs**
- **Common design modifications include:**
  - Custom rod threads/lengths
  - Laser marked customer logo/part# on cylinder body
  - Non Rotating piston rod
  - Special spring forces
  - Special customer specified lubrication
  - Special Seal materials

**Leaders in Actuation.**

Bimba Manufacturing Company  
Monee, IL 60449-0068  
Telephone: 708.534.8544  
Toll Free: 800-44-BIMBA  
Email: [cs@bimba.com](mailto:cs@bimba.com)  
[www.bimba.com](http://www.bimba.com)



SSFO-170.25-8

THIS DRAWING CONTAINS PROPRIETARY DESIGNS AND/OR INFORMATION OF BIMBA MFG. CO. OR ITS SUBSIDIARIES AND IS NOT TO BE TRANSMITTED, REPRODUCED, USED OR DISCLOSED WITHOUT WRITTEN PERMISSION OF BIMBA MFG. CO. OR ITS SUBSIDIARIES. DESIGN REFLECTS OUR BEST ENGINEERING OPINION BASED ON WRITTEN APPLICATION SPECIFICATIONS RECEIVED. SUITABILITY OF A DESIGN FOR AN APPLICATION REQUIRES ANALYSIS AND/OR TESTS IN YOUR SPECIFIC SYSTEM.

Bimba is part of  
**IMI** Precision  
Engineering



**Bimba Manufacturing Co.**

Monee, IL. 60449  
(800) 442-4622 [www.bimba.com](http://www.bimba.com)

PROPRIETARY DRAWING - Reference Only