



Single Acting Air Clamp

Your configured part number: **V-1**

Features and Benefits

- **Economical Performance:**
 - Exceptional gripping power
 - Compact and economical
- **Single-acting Simplicity:**
 - Spring return
 - Great for bending, swaging, forming, crimping, and pressing operations
- **Adjustable Stroke Models:**
 - H0X01, HIX12, V0X01, and VIX12 models offer an adjustable front head for adjusting stroke as much as 1"
- **Versatile:**
 - Numerous mounting options
 - Ideal for use in drill fixtures

Engineering Specifications

Pressure Rating: 150 PSI Air

Temperature Range: -40° F (-40° C) to 250° F (120° C)

Filtration: 40μ minimum

Lubrication: Petroleum base oil

Materials:

Rod: Nitrotec plated steel on 1" bore models, ground & polished on all others

Body & Cover: Aluminum on adjustable models, cast aluminum on all other models (Cast iron on H-12 and H-283)

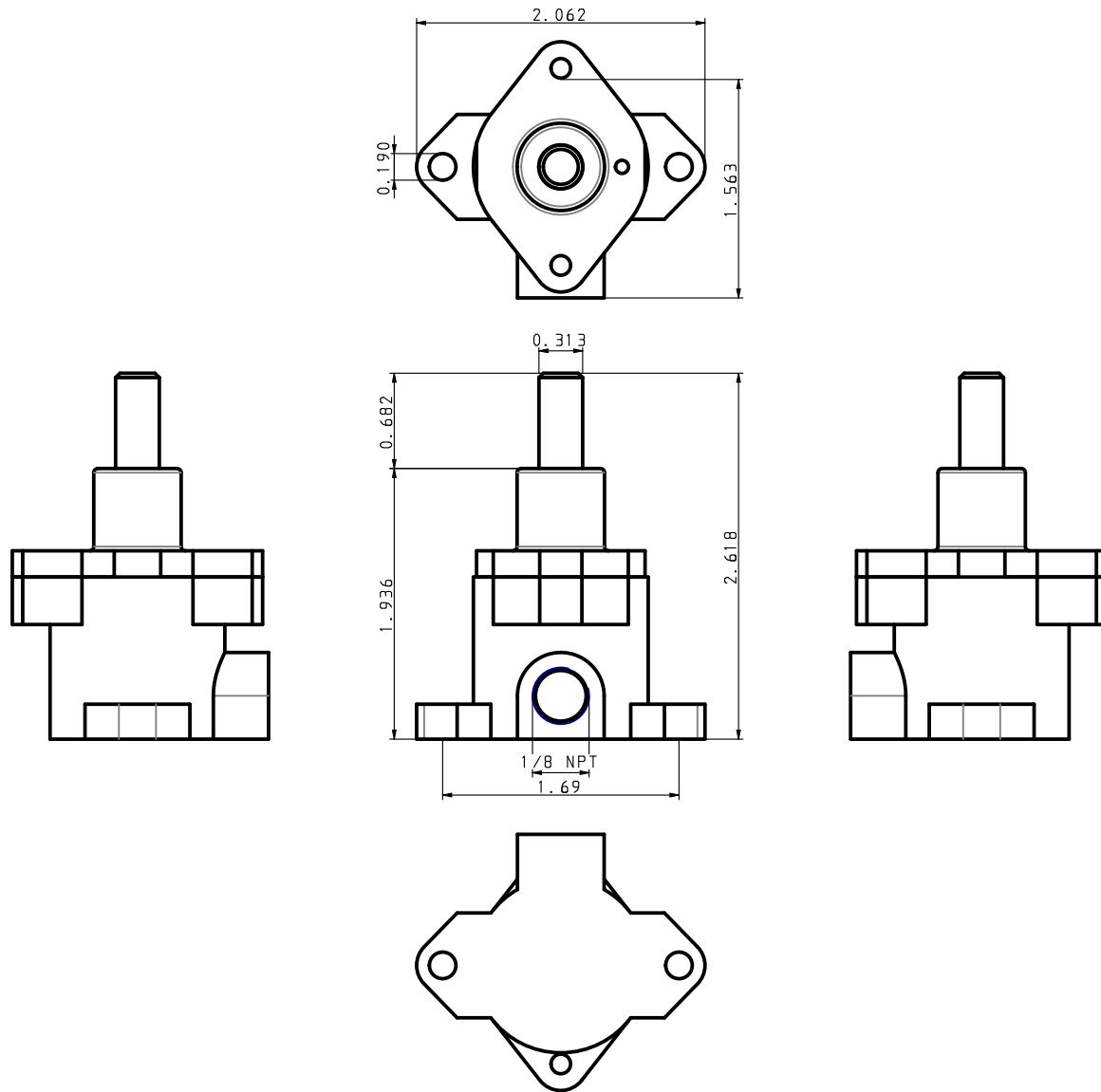
Seals: Custom molded one-piece neoprene cups

Service and Design Capabilities

- Experienced application engineers are available to provide complete pneumatic circuit solutions
- A full line of products including air preparation, valves, actuators, and specialty components are available
- Fast shipping and helpful customer service
- Custom design capabilities to meet your needs
- Call (877) MEAD-USA (877-632-3872)

Bimba Manufacturing Company
Monee, IL 60449-0068
Telephone: 708.534.8544
Toll Free: 800-44-BIMBA
Email: cs@bimba.com
www.bimba.com

Leaders in Actuation.



V-1

THIS DRAWING CONTAINS PROPRIETARY DESIGNS AND/OR INFORMATION OF BIMBA MFG. CO. OR ITS SUBSIDIARIES AND IS NOT TO BE TRANSMITTED, REPRODUCED, USED OR DISCLOSED WITHOUT WRITTEN PERMISSION OF BIMBA MFG. CO. OR ITS SUBSIDIARIES. DESIGN REFLECTS OUR BEST ENGINEERING OPINION BASED ON WRITTEN APPLICATION SPECIFICATIONS RECEIVED. SUITABILITY OF A DESIGN FOR AN APPLICATION REQUIRES ANALYSIS AND/OR TESTS IN YOUR SPECIFIC SYSTEM.

Bimba is part of
IMI Precision
Engineering



Bimba Manufacturing Co.

Monee, IL. 60449
(800) 442-4622 www.bimba.com

PROPRIETARY DRAWING - Reference Only