



# Single Acting Air Clamp

Your configured part number: **V-41**

## Features and Benefits

- **Economical Performance:**
  - Exceptional gripping power
  - Compact and economical
- **Single-acting Simplicity:**
  - Spring return
  - Great for bending, swaging, forming, crimping, and pressing operations
- **Adjustable Stroke Models:**
  - H0X01, HIX12, V0X01, and VIX12 models offer an adjustable front head for adjusting stroke as much as 1"
- **Versatile:**
  - Numerous mounting options
  - Ideal for use in drill fixtures

## Engineering Specifications

**Pressure Rating:** 150 PSI Air

**Temperature Range:** -40° F (-40° C) to 250° F (120° C)

**Filtration:** 40μ minimum

**Lubrication:** Petroleum base oil

### **Materials:**

Rod: Nitrotec plated steel on 1" bore models, ground & polished on all others

Body & Cover: Aluminum on adjustable models, cast aluminum on all other models (Cast iron on H-12 and H-283)

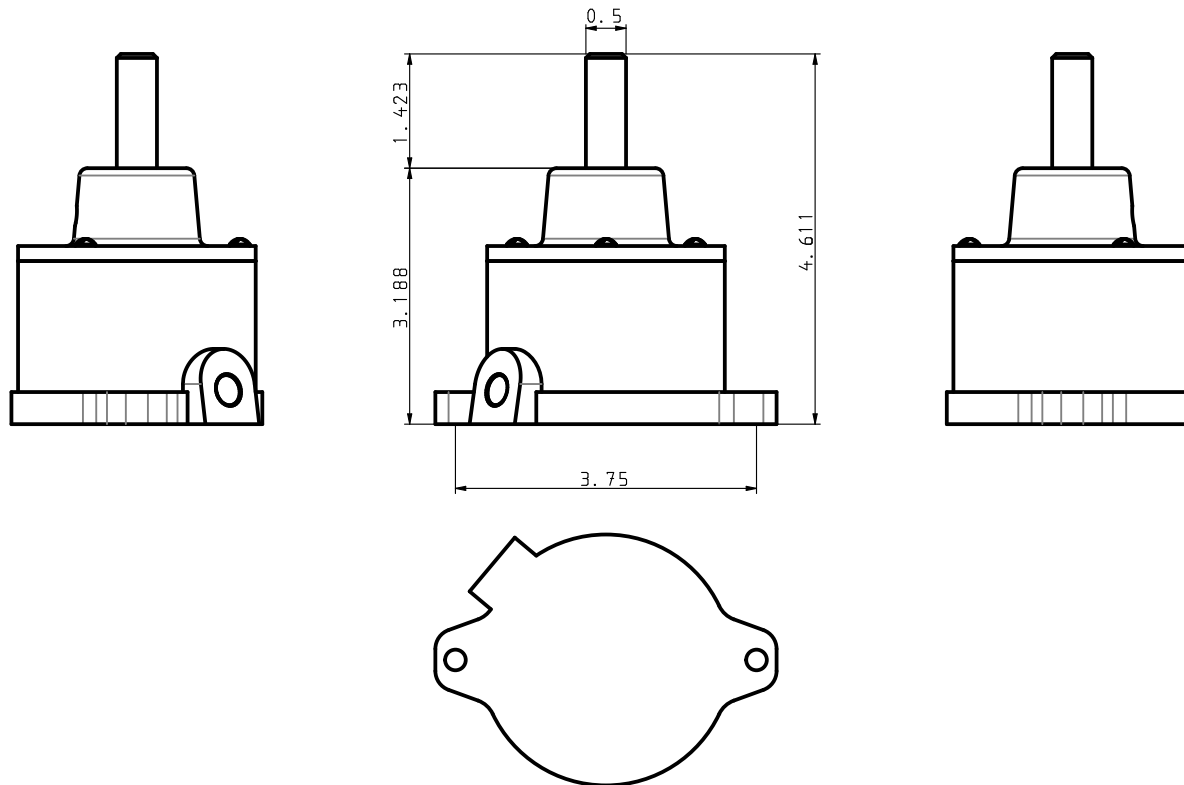
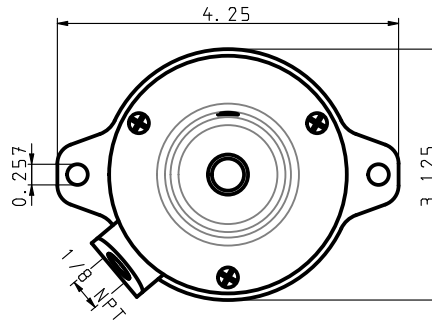
Seals: Custom molded one-piece neoprene cups

## Service and Design Capabilities

- Experienced application engineers are available to provide complete pneumatic circuit solutions
- A full line of products including air preparation, valves, actuators, and specialty components are available
- Fast shipping and helpful customer service
- Custom design capabilities to meet your needs
- Call (877) MEAD-USA (877-632-3872)

Bimba Manufacturing Company  
Monee, IL 60449-0068  
Telephone: 708.534.8544  
Toll Free: 800-44-BIMBA  
Email: [cs@bimba.com](mailto:cs@bimba.com)  
[www.bimba.com](http://www.bimba.com)

**Leaders in Actuation.**



V-41

THIS DRAWING CONTAINS PROPRIETARY DESIGNS AND/OR INFORMATION OF BIMBA MFG. CO. OR ITS SUBSIDIARIES AND IS NOT TO BE TRANSMITTED, REPRODUCED, USED OR DISCLOSED WITHOUT WRITTEN PERMISSION OF BIMBA MFG. CO. OR ITS SUBSIDIARIES. DESIGN REFLECTS OUR BEST ENGINEERING OPINION BASED ON WRITTEN APPLICATION SPECIFICATIONS RECEIVED. SUITABILITY OF A DESIGN FOR AN APPLICATION REQUIRES ANALYSIS AND/OR TESTS IN YOUR SPECIFIC SYSTEM.

Bimba is part of  
**IMI** Precision  
Engineering



**Bimba Manufacturing Co.**

Monee, IL. 60449  
(800) 442-4622 [www.bimba.com](http://www.bimba.com)

PROPRIETARY DRAWING - Reference Only