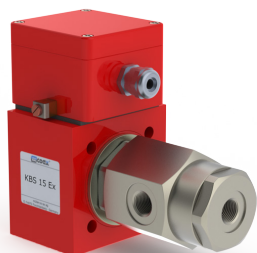
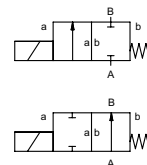



# lateral valve

## type **KBS 15 Ex**



**2/2 way valve**  
**pressure range** PN 0-150 bar  
**orifice** DN 1,5-3 mm  
**connection** thread  
**function** valve  
 normally closed  
 symbol **NC**  
 valve  
 normally open  
 symbol **NO**



 Above stated body materials refer to the valve port connections that get in contact with the media only!

**design** direct acting, with spring return

**body materials** ① brass ②  
 ③ brass, nickel plated ⑤  
 ④ ⑥ stainless steel

**valve seat** synthetic resin on metal  
**seal materials** NBR

FPM

### details needed

- orifice
- port
- function NC/NO
- operating pressure
- flow rate
- media
- media temperature
- ambient temperature
- nominal voltage

### general specifications

### options

<b>ports</b>	KBS	threads G 3/8	special threads
<b>function</b>	NC	NO	
<b>pressure range</b>	bar	40 100 150	100 300 500
	DN	3 2 1,5	3 2 1,5
<b>Kv value</b>	l/min	5,2 1,3 1,1	5,2 1,3 1,1
<b>vacuum</b>	leak rate		< 10 <sup>-6</sup> mbar·l·s <sup>-1</sup>
<b>pressure-vacuum</b>	P <sub>1</sub> ⇄ P <sub>2</sub>		upon request
<b>back pressure</b>	P <sub>2</sub> > P <sub>1</sub>		upon request
<b>media</b>		gaseous - liquid	
<b>abrasive media</b>			
<b>damping</b>	opening		
	closing		
<b>flow direction</b>	A ⇄ B	as marked	bi-directional upon request
<b>switching cycles</b>	1/min	120	300
<b>switching time</b>	ms	opening 250 closing 160	opening 120 closing 80
<b>media temperature</b>	°C	DC: -20 to +40 AC: -20 to +40	
<b>ambient temperature</b>	°C	DC: -20 to +40 AC: -20 to +40	
<b>limit switches</b>			
<b>manual override</b>			
<b>approvals</b>			WAZ
<b>mounting</b>			mounting holes
<b>weight</b>	kg	4,2	
<b>additional equipment</b>			upon request

### electrical specifications


### options


<b>nominal voltage</b>	U <sub>n</sub>	DC 24 V	special voltage
	U <sub>n</sub>	AC 230 V 40-60 Hz	special voltage
<b>actuation</b>	DC	direct-current magnet	
	AC	direct-current magnet with separate rectifier outside of the explosion-proof area	sand sealed rectifier
<b>insulating rating</b>	H	180°C	
<b>protection</b>	IP65		
<b>energized duty rating</b>	ED	100%	
<b>connection</b>	M16x1,5	terminal box	

<b>optional additional equipment</b>					
<b>current consumption</b>	U <sub>n</sub>	V-DC	24 200	48 98 110 220	
	I <sub>n</sub>	A	1,20 0,15	0,68 0,30 0,28 0,14	

**explosion proof** II 2 G Ex mb e II T4 II 2 D Ex tD A21 IP65 T130 °C  
 PTB 02 ATEX 2120 X

**limit switches**

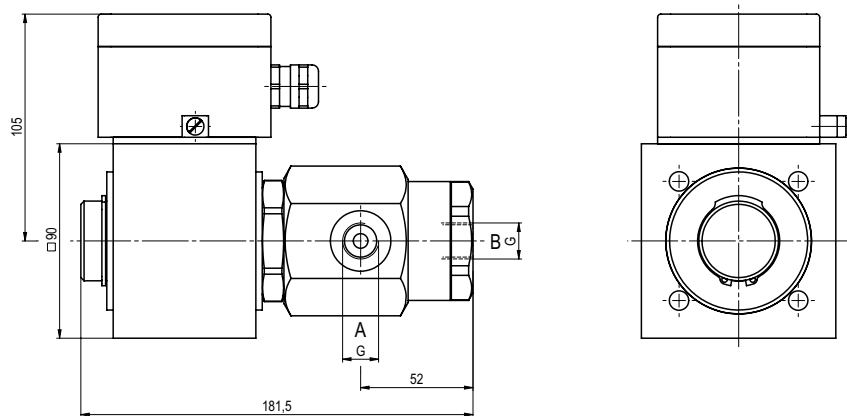
 The valves' technical design is based on media and application requirements. This can lead to deviations from the general specifications shown on the data sheet with regards to the design, sealing materials and characteristics.

 If order or application specifications are incomplete or imprecise there exists a risk of an incorrect technical design of the valve for the required application. As a consequence, the physical and / or chemical properties of the materials or seals used, may not be suitable for the intended application.

■ specifications not highlighted are standard  
 ■ specifications highlighted in grey are optional

type **KBS 15 Ex**

function: **NC**  
closed when not energized

type **KBS 15 Ex**

function: **NO**  
open when not energized

