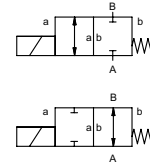


coaxial valve

type MK 10 Ex



2/2 way valve
pressure range PN 0-16 bar
orifice DN 10 mm
connection thread
function valve
 normally closed
 symbol **NC**
 valve
 normally open
 symbol **NO**



⚠ Above stated body materials refer to the valve port connections that get in contact with the media only!

design pressure balanced, with spring return
body materials ① brass ②
 ③ brass, nickel plated ⑤
 ④ ⑥ stainless steel

valve seat synthetic resin on metal
seal materials NBR PTFE, FPM, CR, EPDM

details needed

- orifice
- port
- function NC/NO
- operating pressure
- flow rate
- media
- media temperature
- ambient temperature
- nominal voltage

general specifications

| | | |
|----------------------|---------------------------------|---|
| ports | MK | threads G 1/4 - G 3/4 |
| function | NC | NO |
| pressure range | bar | 0-16 |
| Kv value | m³/h | 2,5 |
| vacuum | leak rate | < 10 ⁻⁶ mbar·l·s ⁻¹ |
| pressure-vacuum | P ₁ ↔ P ₂ | upon request |
| back pressure | P ₂ > P ₁ | upon request |
| media | gaseous - liquid - contaminated | |
| abrasive media | | |
| damping | opening | |
| | closing | |
| flow direction | A ↔ B | as marked |
| switching cycles | 1/min | 200 |
| switching time | ms | opening 80 closing 140 |
| media temperature | °C | DC: -20 to +40 AC: -20 to +40 |
| ambient temperature | °C | DC: -20 to +40 AC: -20 to +40 |
| limit switches | | inductive |
| manual override | | |
| approvals | | LR/GL/WAZ |
| mounting | | mounting brackets |
| weight | kg | MK 1,5 |
| additional equipment | | upon request |

options

electrical specifications

| | | | |
|-----------------------|----------------|--|-------------------------------|
| nominal voltage | U _n | DC 24 V | special voltage upon request |
| | U _n | AC 230 V 40-60 Hz | special voltage upon request |
| actuation | DC | direct-current magnet | |
| | AC | direct-current magnet with integrated rectifier | |
| insulating rating | H | 180°C | |
| protection | IP68 | | |
| energized duty rating | ED | 100% | |
| connection | | terminal box 3 m flying leads | |
| optional | | | |
| additional equipment | | | |
| current consumption | U _n | V-AC/DC 24 230 | 20 48 98 110 125 200 |
| | I _n | A 1,04 0,12 | 1,25 0,50 0,25 0,22 0,22 0,13 |
| explosion proof | | II 2 G Ex mb IIC T4 Gb II 2 D Ex mb IIIC T130°C Db IP68 PTB 03 ATEX 2045 X | |
| limit switches | | inductive NAMUR | circuit amplifier |

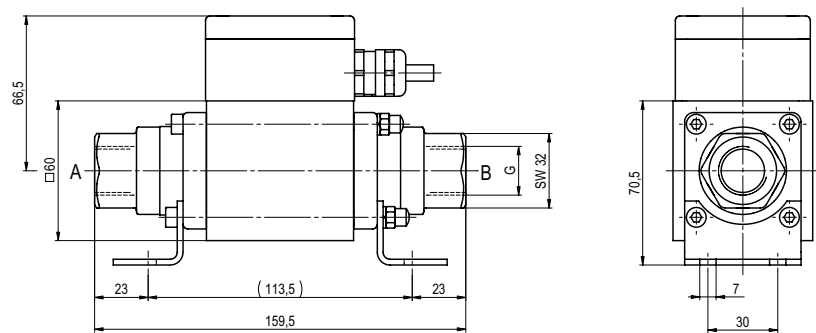
⚠ The valves' technical design is based on media and application requirements. This can lead to deviations from the general specifications shown on the data sheet with regards to the design, sealing materials and characteristics.

⚠ If order or application specifications are incomplete or imprecise there exists a risk of an incorrect technical design of the valve for the required application. As a consequence, the physical and / or chemical properties of the materials or seals used, may not be suitable for the intended application.

■ specifications not highlighted are standard
 ■ specifications highlighted in grey are optional

type **MK 10 Ex**

function: **NC**
closed when not energized



type **MK 10 Ex**

function: **NO**
open when not energized

