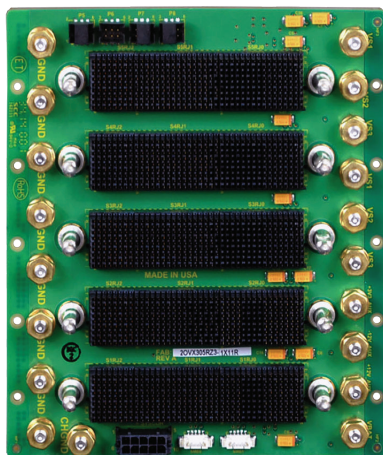
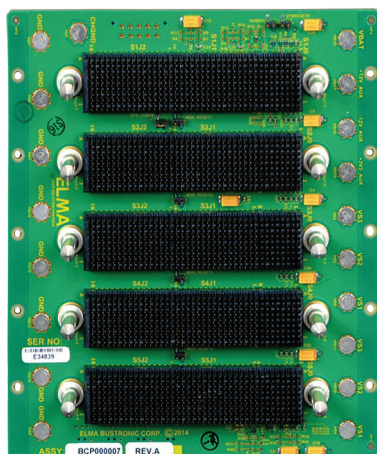


3U 5-Slot OpenVPX Storage Backplane

BKP3-DIS05-15-2.XX-n



Description

Elma's OpenVPX backplanes are designed to meet VITA 65 and VITA 46. This 3U 5-slot VPX backplane features one controller slot and three carrier slots supporting a high speed four card array. A host card slot with one Fat Pipe connection rounds out support for a complete high capacity system.

Features

- Compliant to VITA 65 and VITA 46
- Uses the rugged 3U Eurocard form factor standard with the EPT Velox connector (VITA 60 and VITA 63 connectors upon request)
- Compatible with Elma's Model 5330/1 and 5335/6 storage controller and carrier cards
- One PCIe x 4 (Fat Pipe) host to storage controller connectivity
- Dual SATA3 x 1 (Ultra Thin Pipes) from the storage controller (slot 2) to each of slots 3, 4 and 5 for access to two storage volumes per slot
- Provides built in ESD ground protection in every slot
- Support for Intelligent Platform Management Interface (IPMI)
- Accepts Meritec compatible cables with available accessories

Board Specifications

- 14 layers
- 1oz copper all layers
- PCB FR4 or equivalent
- PCB 0.213" thick

OpenVPX compatibility

- Slots 1 and 2 have a Data Plane routing per, BKP3-DIS02-15.2.8-n
- Slot 1 compatible with slot profiles
 - SLT3-PER-1U-14.3.3, SLT3-PAY-1F-14.3.2, SLT3-PAY-2F-14.3.1, SLT3-PAY-2F2U-14.2.3, SLT-PAY-2F2T-14.2.5.
- Slot 2 compatible with slot profile SLT3-STO-1F2U.
- Slots 3-5 compatible with slot profile SLT3-STO-2U.

Applications and Related Products

- High speed image data recording for surveillance applications
- Rugged data acquisition and storage for mission management or navigational control
- Target tracking and high definition data capture in ground, air and shipboard systems
- Any application requiring high speed, high capacity data record, capture and secure storage



- Load boards convection or conduction cooled
- Storage carrier and controller cards
- Rear Transition Modules for I/O
- Intel & Freescale Single Board Computers
- Blade level networking boards (Ethernet, PCI Express)
- Rackmount, desktop, and ATR chassis platforms
- Ruggedization programs

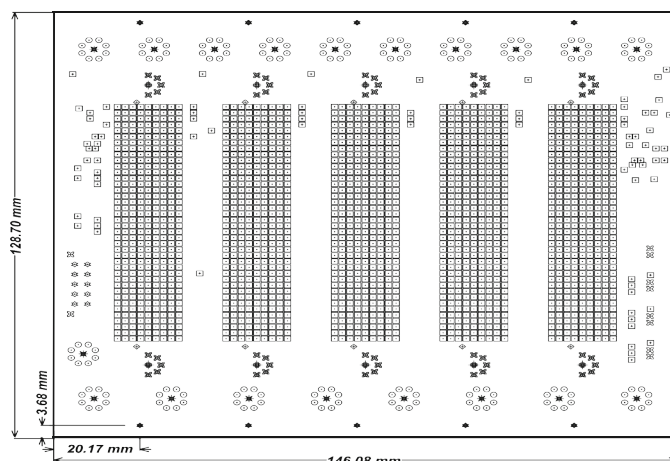


VPX

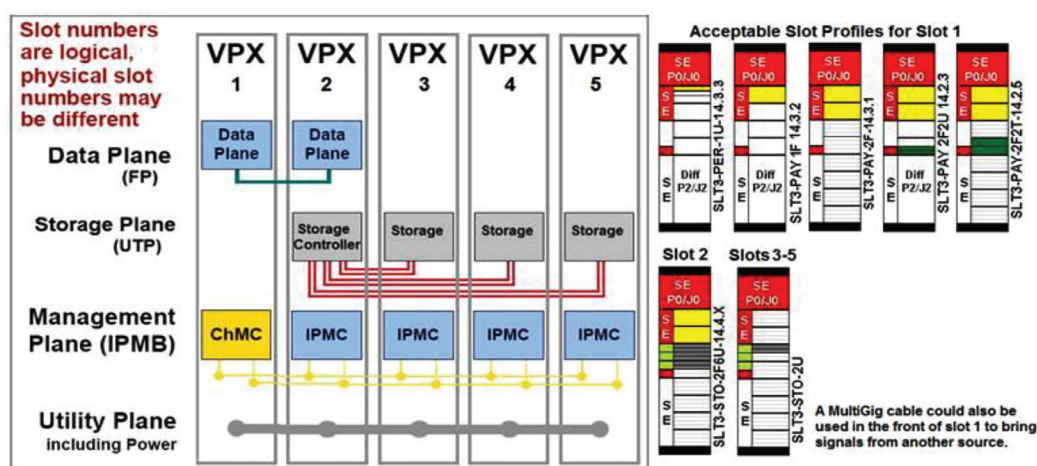


Backplanes

Line Drawing



Backplane Topology



Order Information

| Height | Total Slots | Description | Profile Number | Part Number |
|--------|-------------|---|----------------------|-------------------|
| 3U | 5 | Single star, 2x SATA in expansion plane, no control plane | BKP3-DIS05-15-2.XX-n | 65s305-15.2.xx-xx |

* Final profile is being finalized by the VITA 65 Working Group. Signals are routed per VITA 65 Backplane Profile BKP3- CEN03-15.2.8-3

Note: Ships standard with RTM connectors and mounting features to support Meritec cable assemblies.

Please contact our sales for more details.

| | | | | | | | |
|---------|------------------|----------|------------------|--------------|------------------|-----------------|------------------|
| China: | +86 21 5866 5908 | Germany: | +49 7231 97 34 0 | Singapore: | +65 6479 8552 | United Kingdom: | +44 1234 838 822 |
| France: | +33 437 06 21 10 | Israel: | +972 3 930 50 25 | Switzerland: | +41 44 933 41 11 | United States: | +1 510 656 3400 |

For other countries, please visit our website.