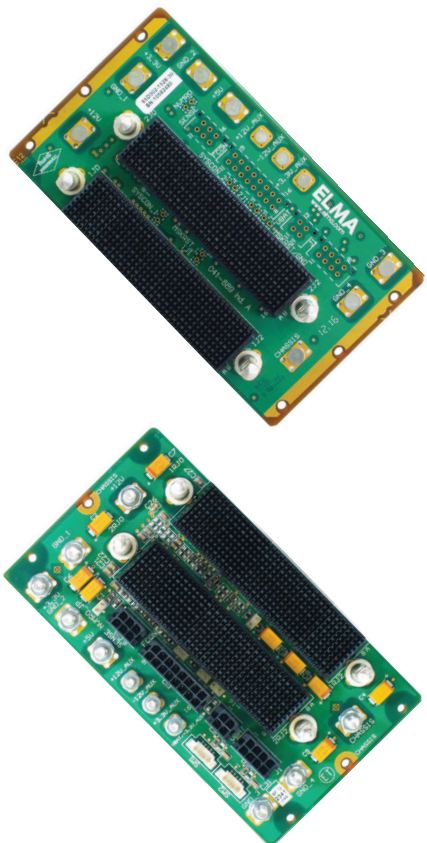


# 3U OpenVPX 2-Slot Backplane

## BKP3-DIS02-15.2.8-n



### Description

OpenVPX defines a reliable and transparent way to ensure the interoperability between the VPX Modules from different vendors as well as the compatibility between Backplane and Slot configurations with similar VPX modules. The OpenVPX (VITA 65) specification defines the various potential backplane configurations via profiles topologies. These backplane profiles provide information about the data rate, routing topology and the fabric topology.

### Features

- BKP3-DIS02-15.2.8-n Backplane Profile compliant with the VITA 65 specification
- ANSI/VITA 65 (OpenVPX System Specification)
- 1 x Double Fat Pipe Data Plane (Double Fat Pipe = 8 x Lanes)
- No Control Plane
- No Expansion Plane

### Board Specifications

- Slot Pitch: 1.0"
- Dimensions: 2.75" wide x 5.07" high x .212" thick (+/- 10%)
- 3U height
- 2 Slots

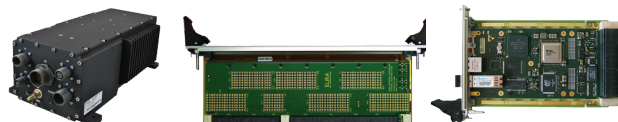
### Slot Profiles

- Slot 1 and 2 (2 x VPX Payload Slots): SLT3-PAY-1D-14.2.6

## Related Products and Applications

### Highly integrated applications such as:

- Integrated display processing, mission management and navigational control for avionics systems
- Industrial monitoring, medical equipment, and night-vision systems requiring enhanced graphics capabilities
- Shipboard systems for target tracking and high definition displays
- Applications requiring a mix of I/O options, high compute density and enhanced graphics



- Load boards convection or conduction cooled
- Rear Transition Modules for I/O
- Intel & Freescale Single Board Computers
- Blade level networking boards (Ethernet, PCI Express)
- Rackmount, desktop, and ATR chassis platforms
- Ruggedization programs

**VPX**

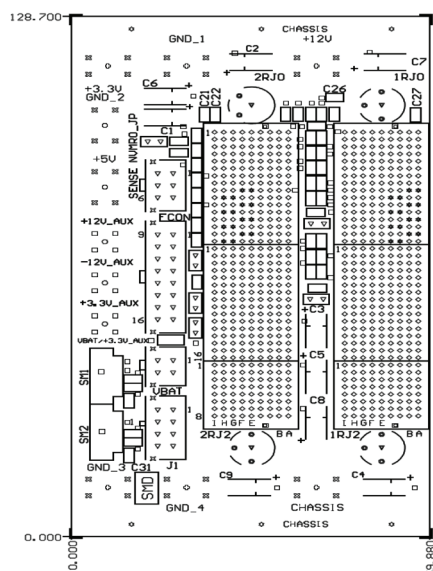


VPX

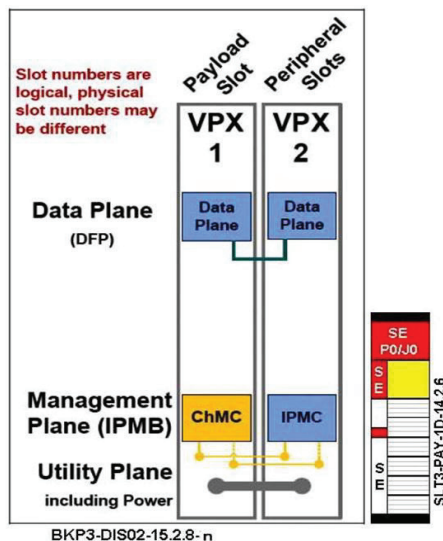


## Backplanes

## Line Drawing



## Backplane Topology



## Order Information

Height	Total Slots	Description	Profile Number	Part Number
3U	2	Distributed mesh, no expansion or control planes	BKP3-DIS02-15.2.8-3	65d302-1528-30

**Please contact our sales for more details.**

China: +86 21 5866 5908      Germany: +49 7231 97 34 0      Singapore: +65 6479 8552      United Kingdom: +44 1234 838 8222  
France: +33 437 06 21 10      Israel: +972 3 930 50 25      Switzerland: +41 44 933 41 11      United States: +1 510 656 3400

For other countries, please visit our website.