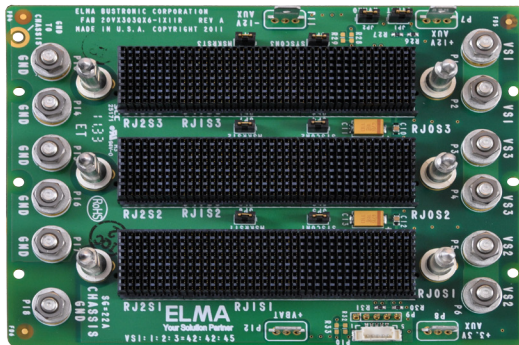
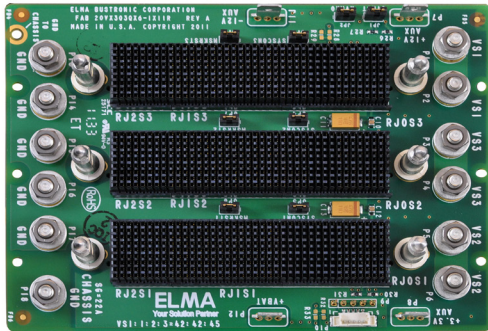


# 3U 3-Slot OpenVPX Backplane

## BKP3-CEN03-15.2.9-n



### Description

Elma's brand of OpenVPX backplanes are designed to meet the VITA 65 specification. The 3-slot backplane features a data plane Fat Pipe connection from slot 1 to 2 and a Fat Pipe connection from slot 1 to slot 3.

### Features

- Compliant to the VITA 65 Standard.
- Uses the rugged 3U-160 Eurocard form factor
- High-speed EPT Velox connector
- Provides built in ESD ground protection in every slot

### Board Specifications

- 14 layers
- 1 oz. copper power and ground
- 0.212" thick PCB, FR-4 or equivalent

### Mechanical Specifications

- 5.067" high X 3.751" tall

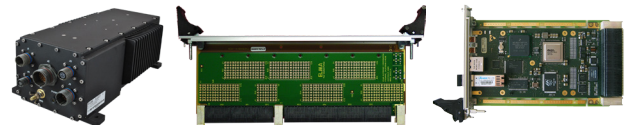
### Slot Profiles

- Slot 1: ... SLT3-PAY-2F-14.2.7
- Slots 2,3:.. SLT3-PER-1F-14.3.2

## Related Products and Applications

### Highly integrated applications such as:

- Integrated display processing, mission management and navigational control for avionics systems
- Industrial monitoring, medical equipment, and night-vision systems requiring enhanced graphics capabilities
- Shipboard systems for target tracking and high definition displays
- Applications requiring a mix of I/O options, high compute density and enhanced graphics



- Load boards convection or conduction cooled
- Rear Transition Modules for I/O
- Intel & Freescale Single Board Computers
- Blade level networking boards (Ethernet, PCI Express)
- Rackmount, desktop, and ATR chassis platforms
- Ruggedization programs

**VPX**

# 3U 3-Slot OpenVPX Backplane

## BKP3-CEN03-15.2.9-n

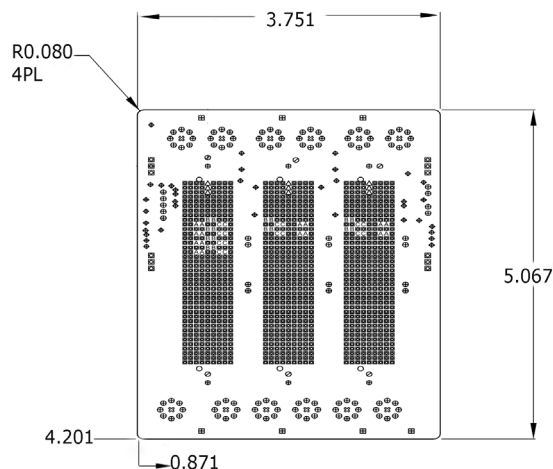


VPX

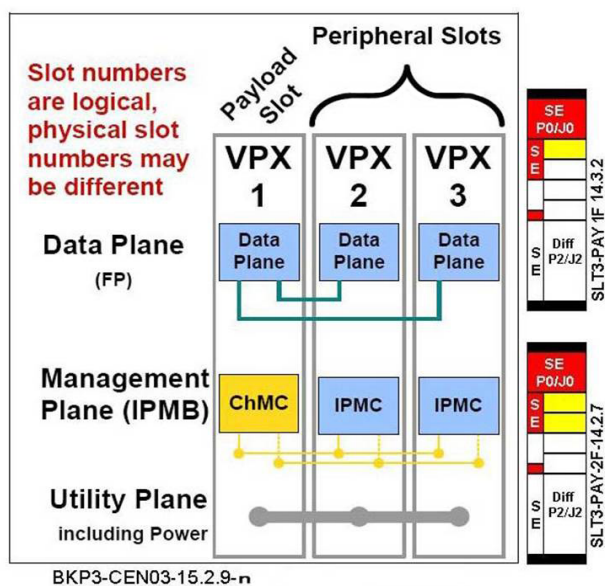


Backplanes

## Line Drawing



## Backplane Topology



## Order Information

Height	Total Slots	Description	Profile Number	Part Number
3U	3	Single Star, no expansion or control planes, Gbaud rate to 6.25	BKP3-CEN03-15.2.9-3	65d303-1529-30
3U	3	Single Star, no expansion or control planes, Gbaud rate to 8	BKP3-CEN03-15.2.9-4	65d303-1529-40

Please contact our sales for more details.

China: +86 21 5866 5908  
France: +33 437 06 21 10

Germany: +49 7231 97 34 0  
Israel: +972 3 930 50 25

Singapore: +65 6479 8552  
Switzerland: +41 44 933 41 11

United Kingdom: +44 1234 838 822  
United States: +1 510 656 3400

For other countries, please visit our website.

Elma Electronic • [www.elma.com](http://www.elma.com)

BKP3-CEN03-15.2.9-n Rev9 - 091516