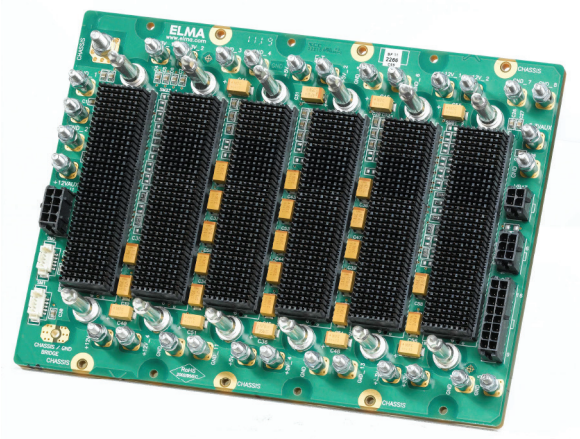
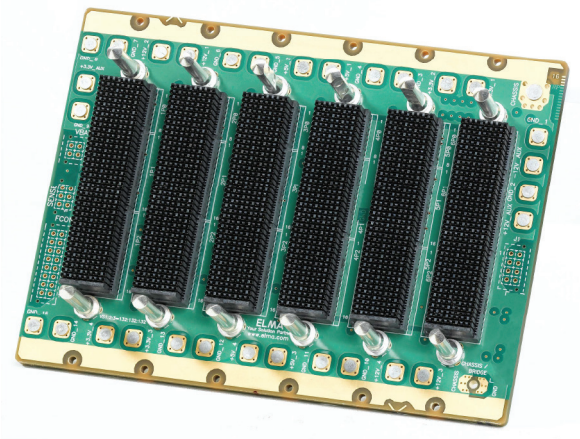


# 3U 6-Slot OpenVPX Backplane

## BKP3-CEN06-15.2.2-n



### Description

Elma's brand of OpenVPX backplanes are designed to meet VITA 65 specifications. The 6 slot OpenVPX features a data plane with 1 Fat Pipe on each slot routed to the switch slot in slot 6. The control plane features an Ultra Thin Pipe on each slot routed to the switch slot. The expansion plane has a Fat Pipe daisy chained on slots 1-5. This backplane makes use of the expansion plane.

### Features

- Compliant to the VITA 65 Standard
- Uses the rugged 3U-160 Eurocard form factor
- High-speed EPT Velox connector
- Provides built in ESD ground protection in every slot

### Board Specifications

- 18 layers
- 1 oz. copper power and ground
- 0.212" thick PCB, FR-4 or equivalent

### Mechanical Specifications

- 5.067" high X 6.692" tall

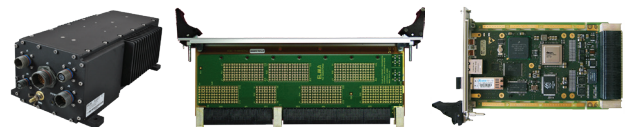
### Slot Profiles

- Slot 1-5: . . .SLT3-PAY-1F2F2U-14.2,2
- Slots 6: . . .SLT3-SW4-6F6U-14.4.1

## Related Products and Applications

### Highly integrated applications such as:

- Integrated display processing, mission management and navigational control for avionics systems
- Industrial monitoring, medical equipment, and night-vision systems requiring enhanced graphics capabilities
- Shipboard systems for target tracking and high definition displays
- Applications requiring a mix of I/O options, high compute density and enhanced graphics



- Load boards convection or conduction cooled
- Rear Transition Modules for I/O
- Intel & Freescale Single Board Computers
- Blade level networking boards (Ethernet, PCI Express)
- Rackmount, desktop, and ATR chassis platforms
- Ruggedization programs

**VPX**

# 3U 6-Slot OpenVPX Backplane

## BKP3-CEN06-15.2.2-n

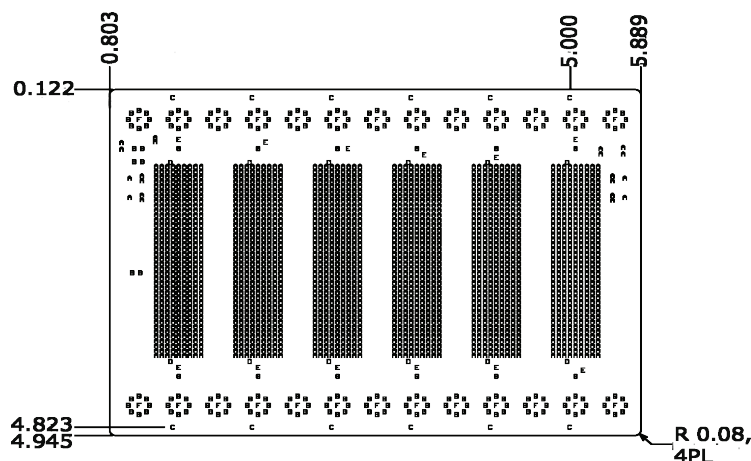


VPX

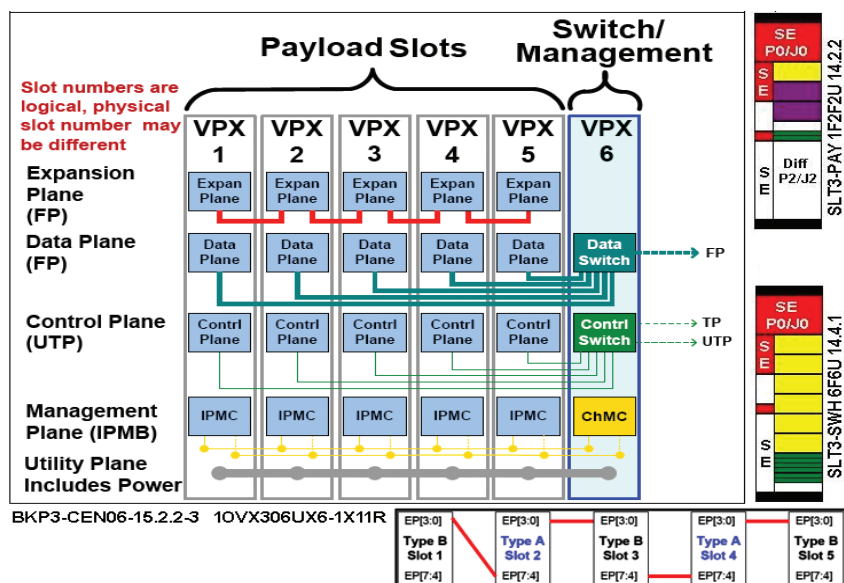


Backplanes

## Line Drawing



## Topology



## Order Information

Height	Total Slots	Description	Profile Number	Part Number
3U	6	Single Star data and control plane, daisy chain expansion plane, Gbaud rate to 3.125	BKP3-CEN06-15.2.2-1	1900002443-0000
3U	6	Single Star data and control plane, daisy chain expansion plane, Gbaud rate to 6.25	BKP3-CEN06-15.2.2-3	1OVX306UX6-1X11R

Please contact our sales for more details.

China: +86 21 5866 5908  
France: +33 437 06 21 10

Germany: +49 7231 97 34 0  
Israel: +972 3 930 50 25

Singapore: +65 6479 8552  
Switzerland: +41 44 933 41 11

United Kingdom: +44 1234 838 822  
United States: +1 510 656 3400

For other countries, please visit our website.

Elma Electronic Inc. • [www.elma.com](http://www.elma.com)