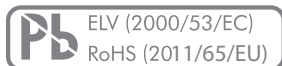


## Product description

### MAIN FEATURES

#### MECHANICAL INCREMENTAL ENCODER

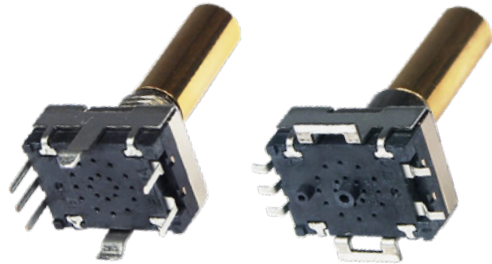
- › Body size: 14.4 x 11.4 x 6.5 mm
- › Rotational life: Up to 150'000 revolutions
- › Resolution: 16, 24 or 30 detents
- › Detent torque: 0.5, 1.5 or 2.5 Ncm
- › With or without push button
- › Push force: 3, 6 N
- › Gold plated sliding contacts
- › IP68 shaft sealing available
- › Various shaft types in brass and stainless steel available
- › Reflow ability
- › Various options and customizations possible



MIL-STD-202G

SWISS CLICK INDEXING SYSTEM™

(for more information see chapter «Technical explanations»)

**E18**

### PRODUCT VARIETY

- With and without push button
- THT or SMT reflow
- Threaded or non-threaded bushing
- Detent torque with 0.5, 1.5 or 2.5 Ncm
- Tray or tape & reel packaging
- Shaft mounted, separated or without shaft

### POSSIBLE CUSTOMIZATIONS

- Shaft dimension and shape
- Detent torque
- Front panel sealing

### TYPICAL APPLICATIONS

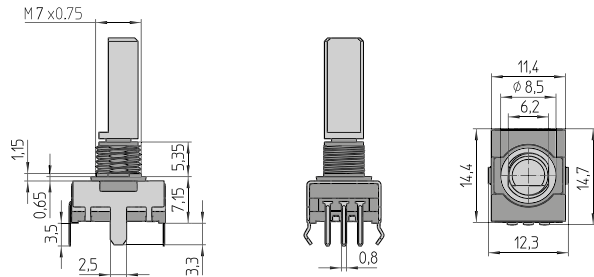
- White goods and household applications
- Home automation
- Two way radio applications
- Power and heat distribution controls
- Water distribution controls
- Industrial controllers
- Audio and entertainment systems

## Dimensions and pin assignment

### SWITCH DESIGN

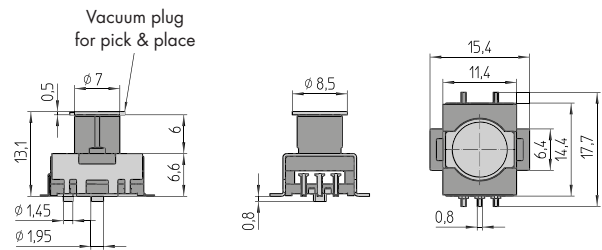
#### THT VERTICAL

Example of illustration with thread



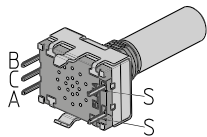
#### SMT

Example of illustration without thread

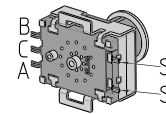


### PIN ASSIGNMENT

#### THT VERTICAL



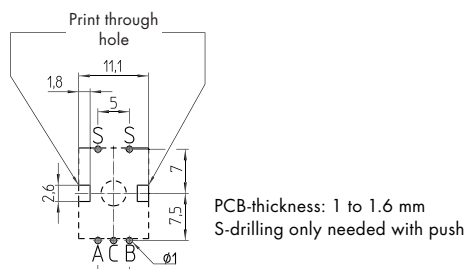
#### SMT



### DRILLING DIAGRAM AND FOOTPRINT

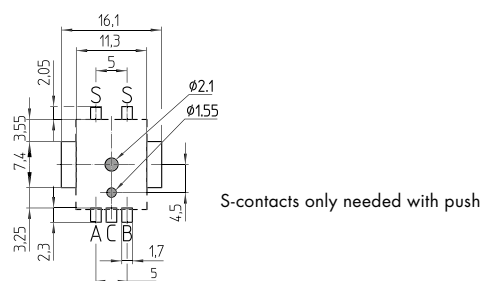
#### THT VERTICAL

View from component side of the PCB



#### SMT

View from component side of the PCB

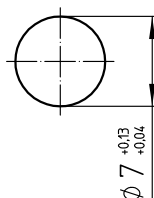
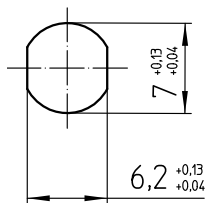


## Dimensions and pin assignment

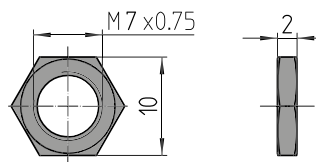
### FRONT PANEL CUT OUT

THREADED

NON-THREADED

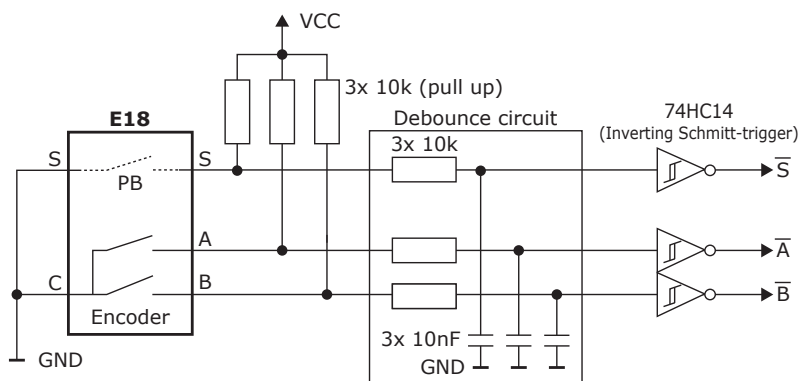


### NUT



## Circuit diagram

### RECOMMENDED SYSTEM INTERFACE



## Ordering information

### ORDERING CODE

E18	-	-	-	-	-	-	-	-	-	-	-	-	-
-----	---	---	---	---	---	---	---	---	---	---	---	---	---

**ORIENTATION | MOUNTING**

**V** THT vertical  
**S** SMT vertical

**FIXING**

**A** Threaded M7 x 0.75  
**E** Non-threaded Ø 7

**IP-PROTECTION<sup>1</sup>**

**0** IP60  
**1<sup>1</sup>** IP68 shaft sealing

<sup>1</sup> Shaft sealing (O-ring) of IP68 may slightly increase switching torque

**RESOLUTION**

**1** 8 PPR, B before A (16 detents)  
**2** 12 PPR, A before B (24 detents)  
**3** 15 PPR, A before B (30 detents)

**PACKAGING**

**T** Tray  
**R** Tape & reel with vacuum plug (SMT only, shafts separated)

**SHAFT TYPE**

See the next page for all available shaft types

**SHAFT**

**M** Mounted  
**S** Separated (snap-in shaft mechanism)  
**N** No shaft

**PUSH BUTTON**

**0** Without push button  
**3** 3 N  
**6** 6 N

**SWITCHING TORQUE<sup>1</sup>**

**B** 0.5 Ncm  
**C** 1.5 Ncm  
**D** 2.5 Ncm

<sup>1</sup> Shaft sealing (O-ring) of IP68 may slightly increase switching torque



## Ordering information

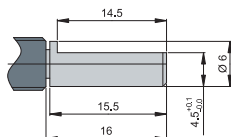
<sup>1</sup> Threaded bushing: Shaft to be ordered separately; shaft mounting after encoder assembly to front panel (nut does not fit 1/4" shaft diameter). OTHER SHAFTS ARE AVAILABLE ON REQUEST.

### SHAFT TYPES

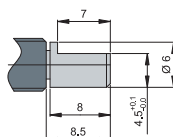
Type 00 - no shaft



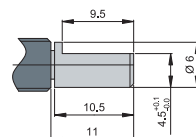
Type 01 - brass



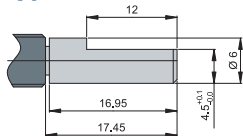
Type 03 - brass



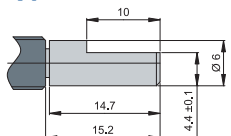
Type 30 - brass



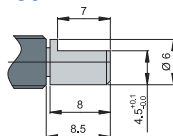
Type 31 - stainless steel



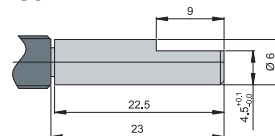
Type 32 - brass



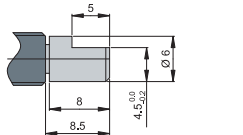
Type 33 - stainless steel



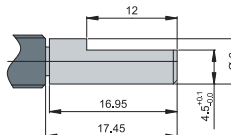
Type 34 - brass



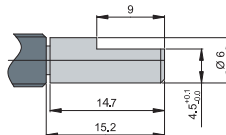
Type 37 - stainless steel



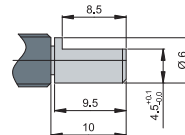
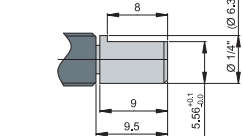
Type 70 - brass



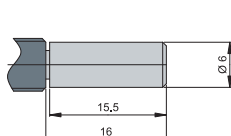
Type 71 - brass



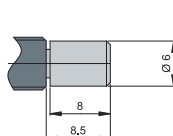
Type 72 - brass

Type<sup>1</sup> 51 - brass

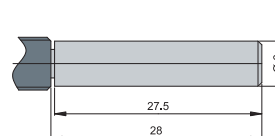
Type 10 - brass



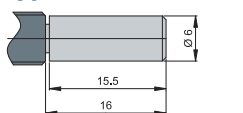
Type 11 - brass



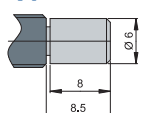
Type 12 - brass



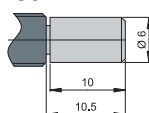
Type 13 - stainless steel



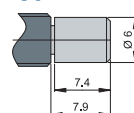
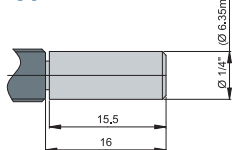
Type 14 - stainless steel



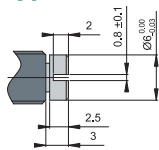
Type 15 - brass



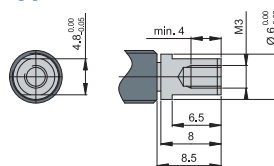
Type 16 - brass

Type<sup>1</sup> 20 - brass

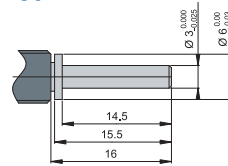
Type 02 - brass



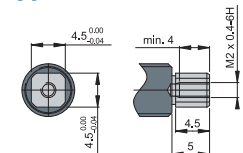
Type 43 - brass



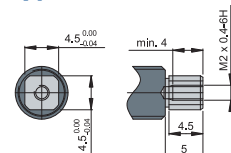
Type 42 - brass



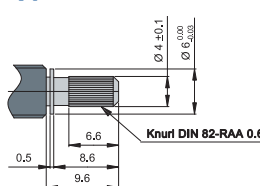
Type 45 - stainless steel



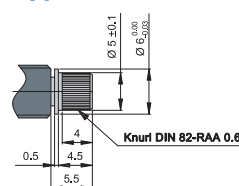
Type 47 - brass



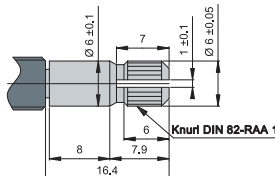
Type 08 - brass



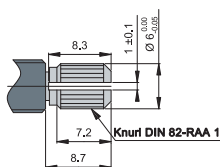
Type 40 - brass



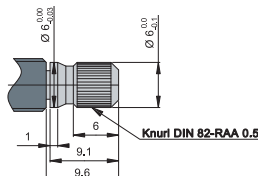
Type 41 - brass



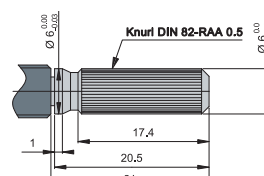
Type 60 - brass



Type 0H - brass



Type 44 - brass



## Ordering information

### PACKAGING

Blister box:	50 pieces (depending on shipment quantity, nuts are supplied and packed separately)
Tape & reel:	200 pieces (only SMT, shafts and nuts are packed separately)

### ACCESSORIES AND SPARE PARTS

Hex nut M7 x 0.75:	Part number 4516-40 (50 pieces / bag), brass, nickel plated
--------------------	---

## Specifications

### Mechanical data

Positions:	16 positions 24 positions 30 positions
Switching torque:	0.5, 1.5 or 2.5 Ncm ( $\pm 30\%$ in new condition)
Rotational life:	> 150'000 revolutions with 0.5 Ncm (tested at room temperature) > 100'000 revolutions with 1.5 Ncm (tested at room temperature) > 60'000 revolutions with 2.5 Ncm (tested at room temperature)
Allowed shaft load:	100 N push, 100 N pull and 50 N side load (static at 20 mm from the support surface)
Fastening torque of nut (front panel mounting):	M7 x 0.75: < 100 Ncm

### Electrical data

Electrical connection:	Pins 0.2 x 0.8 mm
Switching voltage:	< 15 VDC (resistive load)
Switching current:	< 10 mA (resistive load)
Contact resistance:	< 10 $\Omega$ (over the entire rotational life)
Signal   coding:	2-Bit quadrature
Resolution (pulses per revolution):	8, 12 or 15 PPR per channel
Phase shift:	90° ( $\pm 45^\circ$ )
Contact bouncing:	< 8 ms (at 15 RPM)
Dielectric strength:	500 VDC during 60 s (MIL-STD-202G, method 301, between housing and shaft)
Insulation resistance:	> 100 M $\Omega$ at 250 VDC (in new condition)

### Materials

Shaft:	Brass CuZn38Pb2 or stainless steel 1.4305
Bushing   housing:	Zinc die casting nickel plated, fiberglass reinforced high performance plastic
Contact surface:	Cu alloy (Au plated)
Soldering leads:	Cu alloy (tin plated)
Hex nut:	Brass (nickel plated)
Housing clamp:	Tinplate
O-rings:	NBR (nitrile rubber), 70 shore A

## Specifications

### Environmental data

Operating temperature:	-40 to +85 °C (IEC 60068-2-14)
Storage temperature:	-65 to +105 °C (IEC 60068-2-14)
Humidity:	< 93 % relative humidity (MIL-STD-202G, method 103B, condition B)
IP sealing against front panel:	IP60 without sealing IP68 with shaft sealing (2 bar, 1 h)
Vibration:	9 G <sub>RMS</sub> at 50 to 2'000 Hz (MIL-STD-202G, method 214A, duration 15 min)
Shock:	100 G (MIL-STD-202G, method 213B, condition C)
Flammability:	UL94-V0 Gaskets UL94-HB

### Soldering conditions

Hand soldering:	< 300 °C during 3 s
Reflow soldering:	IPC / JEDEC J-STD-020C
Wave soldering:	< 280 °C during 5 s

### Mechanical data for push button

Actuation force:	3, 6 N (±30 % in new condition)
Travel:	0.5 (±0.2) mm
Lifecycles:	> 100'000 cycles (tested at room temperature)

### Electrical data for push button

Contact resistance:	< 10 Ω (over entire rotational life)
Switching voltage:	< 15 VDC (resistive load)
Switching current:	< 10 mA (resistive load)
Contact bouncing:	< 2 ms (at 2 Hz)

### Materials for push button

Contact surface:	Cu alloy (Au plated)
Snap dome:	Stainless steel

©Copyright 2018 by Elma Electronic AG, CH-8620 Wetzikon. Subject to technical modifications, all data supplied without liability.

**Please contact our sales team for more details.**

China: +86 21 5866 5908  
France: +33 388 56 72 50

Germany: +49 7231 97 34 0  
Israel: +972 3 930 50 25

Singapore: +65 6479 8552  
Switzerland: +41 44 933 41 11

United Kingdom: +44 1234 838 822  
United States: +1 510 656 3400