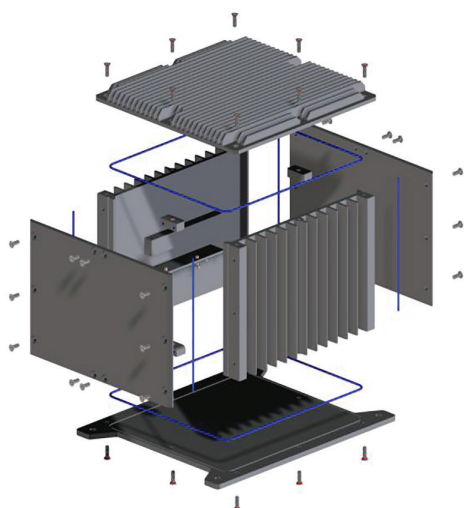


# Type 53 Chassis Family

## Small Form Factor Board Chassis

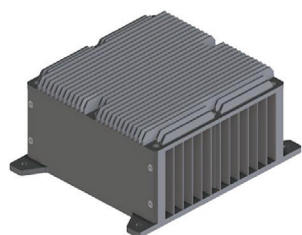


### Description

Our Type 53 platform follows in the tradition of Elma's line of electronic enclosures with this rugged extruded aluminum small form factor box for PCI/104 board stacks. The Type 53 is ideal for use in harsh environments for payloads supporting PC platforms, networking infrastructure or I/O specific multi-functional computers. Our experienced team can work with you to tailor thermal solutions for your payload.

### Features

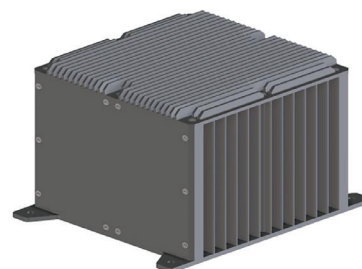
- Small light weight construction for SWaP constrained applications
- Extensible design for up to three PCI/104 boards
- Custom front panels to suit your specific I/O sets
- Optional IP67 for extended ingress protection
- Custom colors for your intended purpose
- Superior cooling performance
- Contact Elma regarding COM Express based board payloads



Model 53-001-0X



Model 53-002-0X



Model 53-003-0X

## Applications and Related Products

The Type 53 box provides solid thermal and extended shock and vibration protection to these critical application areas.

- Drilling and mining operations
- Commercial air and ground transport infrastructure
- Energy distribution
- Mobile ground, ship and air defense equipment
- Homeland security and emergency services

**Note:** No investment in tooling is required as each case is assembled using standard parts.

### Customization Services

- Front & rear panel cutouts & perforation patterns
- Special studs, standoffs, spacers
- Custom colors

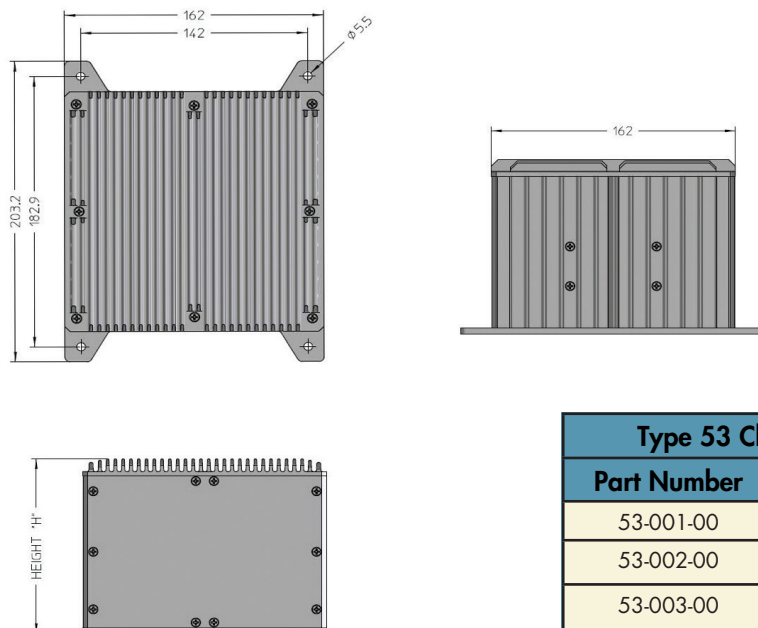


- SureLock card edge retainers for solid mechanical card retention and conduction cooling
- Small form factor power supplies with Mil 704, 461 and 1275 options
- Fully integrated system capability - we can assist with the entire project
- Complete line of lite industrial enclosures

# Type 53 Chassis Family

## Small Form Factor Board Chassis

### Line Drawing



Type 53 Chassis Family	
Part Number	Height "H"
53-001-00	65.7
53-002-00	120.7
53-003-00	135.9

### Order Information

IPC Box, Kit Set, Including Hardware	
Part Number	Description
53-001-00	IPC box, 1 slot, 65.7 x 162 x 182.9mm, no finish
53-002-00	IPC box, 2 slots, 120.7 x 162 x 182.9mm, no finish
53-003-00	IPC box, 3 slots, 135.9 x 162 x 182.9mm, no finish

IPC Box, Kit Set, Including Hardware	
Part Number	Description
53-001-00-IP67	IPC box, 1 slot, 65.7 x 162 x 182.9mm, no finish, IP67
53-002-00-IP67	IPC box, 2 slots, 120.7 x 162 x 182.9mm, no finish, IP67
53-003-00-IP67	IPC box, 3 slots, 135.9 x 162 x 182.9mm, no finish, IP67

For a complete list of international sales contacts, please visit our [Global Contacts](#) page or email us at [sales@elma.com](mailto:sales@elma.com).

Please contact our sales for more details.

China: +86 21 5866 5908  
France: +33 437 06 21 10

Germany: +49 7231 97 34 0  
Israel: +972 3 930 50 25

Singapore: +65 6479 8552  
Switzerland: +41 44 933 41 11

United Kingdom: +44 1234 838 822  
United States: +1 510 656 3400

For other countries, please visit our website.

**Elma Electronic • [www.elma.com](http://www.elma.com)**

Type 53-chassis-family-Rev.7 - 090517