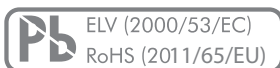


Product description

MAIN FEATURES

MINIATURE DESIGN

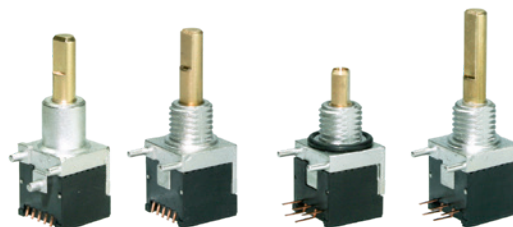
- › Gray coding 16 positions
- › Switching mode: Shorting
- › Switching torque: 2.5 Ncm
- › Body size: 9 x 9 x 10 mm
- › Lowest profile PCB to shaft center line: 4.65 mm
- › Switching cycles 20'000
- › THT horizontal
- › IP68 front panel sealing
- › Operating temperature range: -40 to +85 °C



PRODUCT VARIETY

- Threaded or non threaded bushing
- With end stop or endless rotating
- Front panel sealing IP60 or IP68
- Various shaft types
- Tray or tape & reel packaging

C08



POSSIBLE CUSTOMIZATIONS

- Shaft dimension and shape
- Others

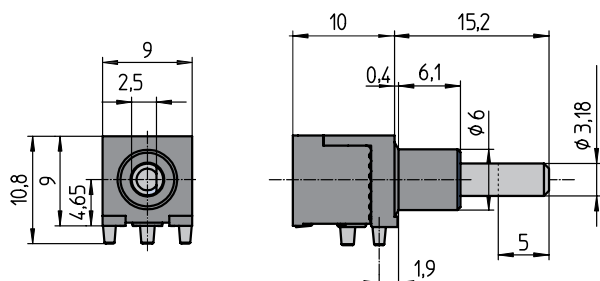
TYPICAL APPLICATIONS

- Frequency and channel selection for two way radios
- Target aiming devices
- Other miniaturized mobile applications

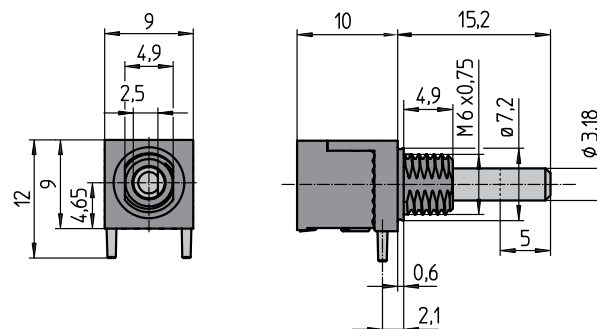
Dimensions and pin assignment

SWITCH DESIGN

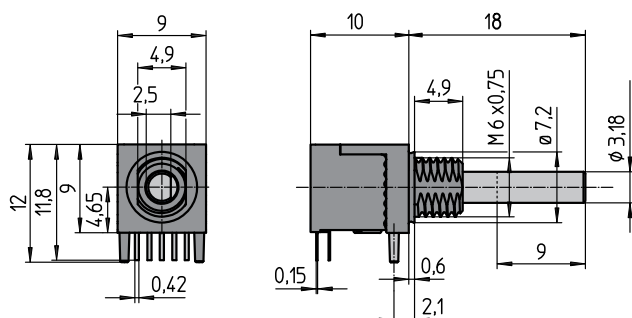
SMT NON-THREADED



SMT THREADED



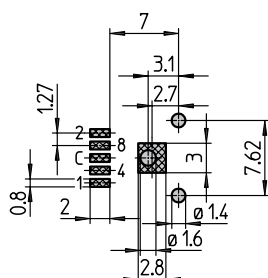
THT THREADED



PIN ASSIGNMENT AND DRILLING DIAGRAM

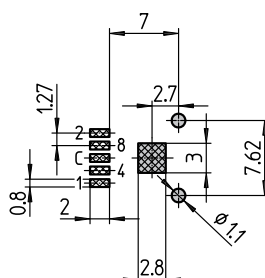
SMT NON-THREADED

View from component side of the PCB



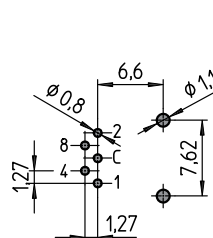
SMT THREADED

View from component side of the PCB



THT NON-THREADED

View from component side of the PCB



Dimensions in mm

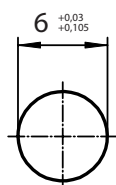
Tolerances according to DIN ISO 2768-1 (M), unless otherwise specified

Dimensions and pin assignment

FRONT PANEL CUT OUT

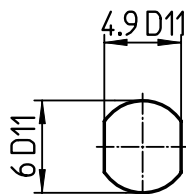
SMT NON-THREADED

View from component side of the PCB



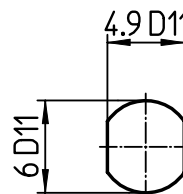
SMT THREADED

View from component side of the PCB



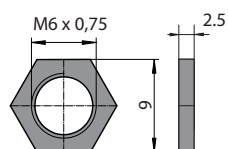
THT THREADED

View from component side of the PCB

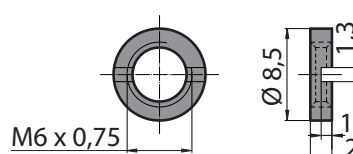


NUT

HEX NUT (SUPPLIED)



SLOTTED NUT



Ordering information

ORDERING CODE

C08

-

-

-

1

-

-

MOUNTING

S SMT
T THT

PACKAGING

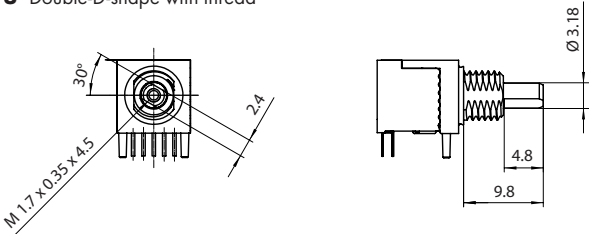
T Tray (50 pieces / tray, donut supplied for SMT types)
R Tape & reel (300 pieces / reel, donut supplied)

BUSHING

1 Threaded (nut supplied, packed separately)
2 Non-threaded (available for SMT only)
3 Threaded | IP68 | shaft / front panel sealing (nut supplied, packed separately)

SHAFT TYPE

S D-shape | short | 15.2 mm
L D-shape | long | 18.0 mm
U Double-D-shape with thread



END STOP

1 With end stop
2 Endless rotating

PREFERENCE TYPES SELECTION CHART¹

PACKAGING	IP SEALING	PCB MOUNTING	BUSHING	SHAFT LENGTH	PART NUMBER	
					WITH END STOP	ENDLESS ROTATING
Tray	IP60	SMT	Non-threaded	15.2 mm	C08S211ST	C08S221ST
			Threaded	15.2 mm	C08S111ST	C08S121ST
		THT	Threaded	18 mm	C08T111LT	C08T121LT
			Threaded	15.2 mm	C08T111ST	C08T121ST
	IP68	SMT	Threaded	15.2 mm	C08S311ST	C08S321ST
			Threaded	18 mm	C08T311LT	C08T321LT
		THT	Threaded	18 mm	C08T311LT	C08T321LT
			Threaded	15.2 mm	C08T311ST	C08T321ST

¹ For other types | options, see type key

Ordering information

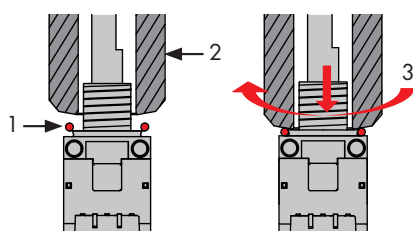
PACKAGING

Blister box:	50 pieces
Tape & reel:	300 pieces

O-RING MOUNTING TOOL

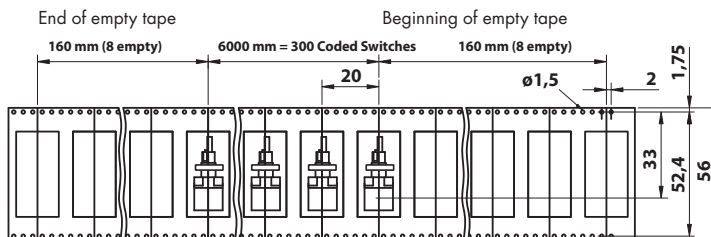
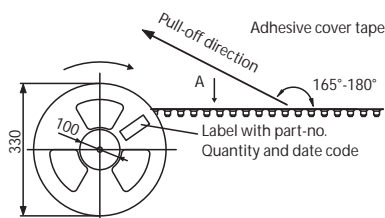


Part number: C08RINGTL

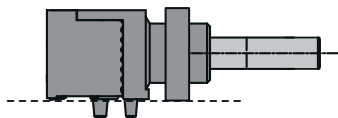


- 1 Slip the lubricated O-ring over the bushing.
- 2 Slide the mounting tool over the bushing.
- 3 While pushing down the O-ring simultaneously rotate the mounting tool.

TAPE & REEL PACKAGING



SOLDERING SUPPORT DONUT



A soldering support donut is supplied on bushings with tape & reel packaging or tray packed SMT types. To be removed after soldering.

ACCESSORIES AND SPARE PARTS

Hex nut M6 x 0.75:	Part number 4424-22 (50 pieces / bag), brass
Slotted nut M6 x 0.75:	Part number 4424-28 (50 pieces / bag), brass
	Part number 4424-31 (50 pieces / bag), stainless steel (cross slot)

Specifications

MECHANICAL DATA

Detent angle positions:	22.5° detent angle 16 positions
Rotary limitation end stop:	Without or between first and last position
Switching torque:	2.5 Ncm ($\pm 30\%$ in new condition)
Rotational life:	> 20'000 cycles (tested at room temperature)
Rotational stop strength:	> 40 Ncm
Fastening torque of nut (front panel mounting):	M6 x 0.75: < 100 Ncm

ELECTRICAL DATA

Electrical connection:	SMT: Soldering surfaces THT: Pins 0.15 x 0.42 mm
Switching voltage:	< 15 VDC (resistive load)
Switching current:	< 10 mA (resistive load)
Contact surface:	< 50 m Ω (in new condition)
Signal coding:	Gray
Switching mode:	Shorting
Dielectric strength:	500 VDC during 60 s (pin-to-pin, pin-to-housing)
Insulation resistance:	> 1 G Ω at 500 VDC (pin-to-pin, pin-to-housing, in new condition)

MATERIALS

Shaft:	Brass CuZn39Pb3
Bushing housing:	Zinc die casting (with miralloy plating), fiberglass reinforced high performance plastic
Contact surface:	Cu alloy (Au plated)
Soldering leads:	Cu alloy
Hex nut:	Brass
Slotted nut:	Brass or stainless steel
O-rings:	NBR (nitrile rubber), 70 shore A

ENVIRONMENTAL DATA

Operating temperature:	-40 to +85 °C (IEC 60068-2-14)
Storage temperature:	-40 to +85 °C (IEC 60068-2-14)
IP sealing against front panel:	IP60 without sealing IP68 with shaft and front panel sealing (2 bar, 1 h)
Vibration:	10 G _{RMS} at 10 to 2'000 Hz
Flammability:	UL94-HB

SOLDERING CONDITIONS

Hand soldering:	< 280 °C during 2 s
Wave soldering:	< 280 °C during 2 s

©Copyright 2018 by Elma Electronic AG, CH-8620 Wetzikon. Subject to technical modifications, all data supplied without liability.

Please contact our sales team for more details.

China: +86 21 5866 5908
France: +33 388 56 72 50

Germany: +49 7231 97 34 0
Israel: +972 3 930 50 25

Singapore: +65 6479 8552
Switzerland: +41 44 933 41 11

United Kingdom: +44 1234 838 822
United States: +1 510 656 3400