

# P, 11-Series, Ultra-High Pressure Hand Pumps **ENERPAC**

▼ Shown from left to right: 11-100, P2282



## Ultra-High Pressure up to 40,000 psi



### 2-Way Shut-Off Valve Model Number 72-750

For 40,000 psi applications requiring a shut-off valve or gauge snubber. Made of 318 Stainless Steel and utilizing .38 inch cone fittings, it is the perfect selection for use with your ultra-high pressure hand pump.

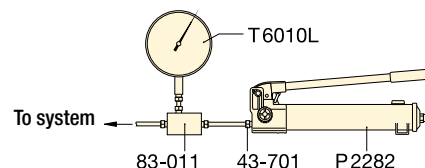


### Test System Gauges

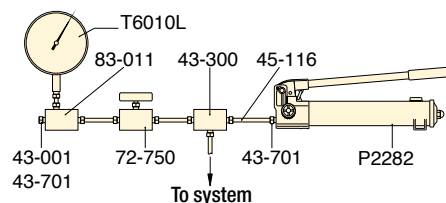
Ideal for monitoring pressure in your hydraulic circuit. Test System Gauges, such as the **T6010L**, are available with cone threads or NPTF threads and a variety of pressure ranges.

- Two-speed operation on the P2282 allows for faster fill operation, reducing cycle times for many testing applications
- 303 Stainless steel construction on the 11-100 and 11-400 models enable use with many different fluids, such as distilled water, diesters, silicones, soluble oils and petroleum
- Large release knob for improved control of pressure release
- Outlet ports are 3/4"-16 UNF cone for 40,000 psi rating
- Ultra-high pressure fittings feature all stainless steel construction except adaptor 41-366 which features nickel plated carbon steel construction.

Page: **148**



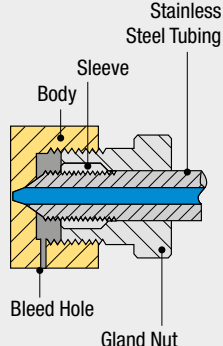
▲ Typical Test System



▲ Test System with Gauge and Snubber

### Cone Seal

Stainless Steel High Pressure fittings seal on a 'cone' surface and do not require pipe sealer. The Gland Nut holds the sleeve and tubing tight against the cone surface to provide a 40,000 psi seal.



Pump Type	Usable Oil Capacity (in <sup>3</sup> )	Model Number	Pressure Rating * (psi)		Oil Displacement per Stroke (in <sup>3</sup> )		Max. Handle Effort (lbs)
			1 <sup>st</sup> stage	2 <sup>nd</sup> stage	1 <sup>st</sup> stage	2 <sup>nd</sup> stage	
Two-Speed	60	P2282	200	40,000	0.99	0.037	106
Single-Speed	45	11-100	-	10,000	-	0.152	120
	45	11-400	-	40,000	-	0.038	120

\* Contact Enerpac for applications where operating pressure is less than 10% of operating pressure.

# Ultra-High Pressure Hand Pumps

## ▼ Optional Ultra-High Pressure Fittings and Tubings

Description	Connection	Model No.
<b>40,000 psi</b>		
Gland Nut Plug	.38" cone	43-001
Elbow	.38" cone	43-200
Tee	.38" cone	43-300
Gauge Tee	.38" cone side/ .25" cone gauge port	43-301
Gauge Adaptor	.38" cone side/ .25" cone gauge port	83-011
Coupling	.38" cone	43-400
Cross	.38" cone	43-600
Gland Nut with Sleeve	.38" cone	43-701
Gauge Connector	.25" cone	43-704
Tubing	4 inch tube, O.D. .38" * 8 inch tube, O.D. .38" * 12 inch tube, O.D. .38" *	45-116 45-126 45-136
<b>WARNING: Maximum working pressure: 10,000 psi only</b>		
Adaptor	.38" F cone to 1/4" M NPTF .38" F cone to 3/8" M NPTF	41-146 41-166
Adaptor	.38" F cone to 1/4" F NPTF .38" F cone to 3/8" F NPTF	41-246 41-266
Adaptor	.38" M cone to 3/8" F NPTF	41-366

Note: .25" cone fittings use 9/16"-18 threads, 3/8" cone fittings use 3/4"-16 threads.  
\* Actual tubing lengths are 0.75 inch less than nominal size shown. These dimensions make distance between centers of valves and fittings multiples of 4 inches spaces.

**P,  
11  
Series**



Reservoir Capacity:  
**45 - 60 in<sup>3</sup>**

Flow at Rated Pressure:  
**0.037 - 0.152 in<sup>3</sup>/stroke**

Maximum Operating Pressure:  
**10,000 - 40,000 psi**



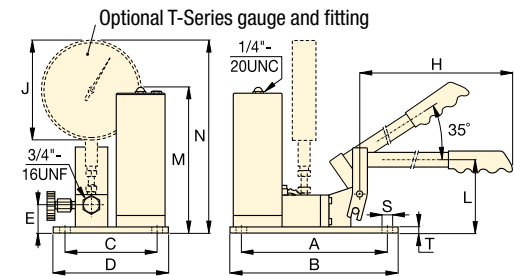
**Ultra-High Pressure pumps  
DO NOT have an internal safety  
pressure relief valve.**



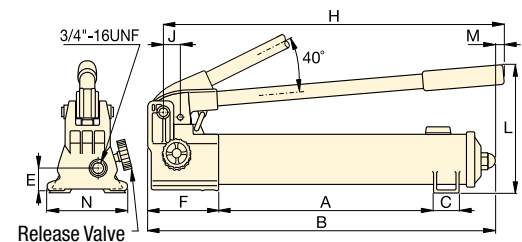
### Stainless Steel Construction


Ultra-High Pressure Fittings feature all stainless steel construction except adaptor **41-366**, which features nickel plated carbon steel construction.

11-100  
11-400



P2282



Piston Stroke	Dimensions (in)															Model Number
	(in)	A	B	C	D	E	F	H	J	L	M	N	S	T	(lbs)	
1.00	13.56	22.00	1.40	—	1.24	5.25	20.75	1.16	9.00	0.28	4.74	—	—	14		P2282
0.78	9.45	10.50	5.98	7.00	1.77	—	25.00	6.41	4.50	9.33	12.38	0.31	0.37	22		11-100
0.78	9.45	10.50	5.98	7.00	1.77	—	25.00	6.41	4.50	9.33	12.38	0.31	0.37	22		11-400