

▼ Shown from left to right: BRC25, BRC46, BRP306, BRP606, BRP106C



- High strength alloy steel construction
- Hard chrome-plated plunger for long life
- Replaceable links on BRP-models
- Baked enamel finish for increased corrosion resistance
- CR400 coupler and dust cap included on all models
- Plunger wiper reduces contamination, extending cylinder life
- Single-acting, spring return.

The Ultimate in Pulling Power



Gauges

Minimize the risk of overloading and ensure long, dependable service from your equipment. Refer to the System Components

Section for a full range of gauges.

Page: 135



Attachments and Accessories

BRC25 and BRC46 cylinders have base, collar and plunger threads to affix a range of optional attachments and accessories, such as chains, saddles and extension tubes.

Page: 175

▼ Lifting mining conveyor belt using pull cylinders for bearing maintenance.



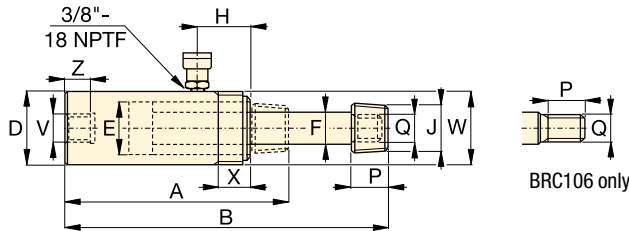
▼ To lift a load bearing mast into place, BRP-Series cylinders were used to tension the supporting cables.



Single-Acting, Pull Cylinders

BRC Cylinder Mounting Dimensions (in)

Model Number	Base Mounting Hole V	Collar Thread W	Collar Thread Length X	Mounting Thread Length Z
BRC25	3/4"-14 NPT	1 1/2" - 16 UN	0.98	0.67
BRC46	1 1/4"-11 1/2 NPT	2 1/4" - 14 UN	1.06	0.98
BRC106	M30 x 2	M85 x 2	1.02	0.98



BRC25, 46, 106

**BRC,
BRP
Series**



Capacity:


2.5 - 60 tons

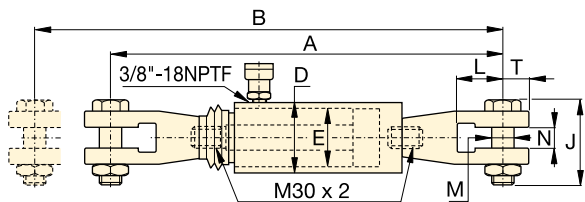
Stroke:

5.00 - 6.06 inches

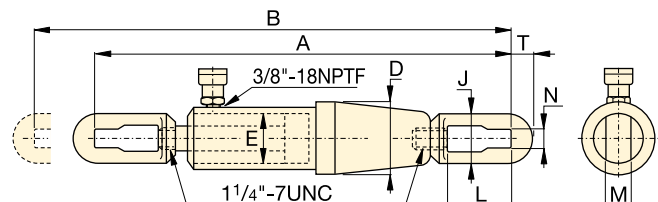
Maximum Operating Pressure:

10,000 psi

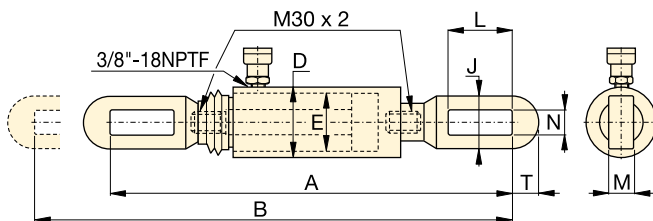
Cylinder Capacity tons (maximum)	Stroke (in)	Model Number	Cylinder Effective Area (in ²)	Oil Capacity (in ³)	Coll. Height A (in)	Ext. Height B (in)	Outside Dia. D (in)	Cylinder Bore Dia. E (mm)	Plunger Dia. F (in)	Top to Inlet Port H (in)	Saddle Diameter J (NPT)	Plunger Thread Length P (in)	Plunger Outside Thread Q	 (lbs)
2.5 (2.7)	5.00	BRC25	0.55	2.76	10.44	15.44	1.89	1.13	0.75	1.77	3/4" - 14	1.13	1 1/16" - 24	4
5 (5.6)	5.50	BRC46	1.13	6.21	11.88	17.38	2.25	1.69	1.19	1.69	1 1/4" - 11 1/2	1.25	1 3/16" - 16	10
10 (11.6)	5.95	BRC106	2.32	13.80	11.38	17.33	3.35	2.13	1.25	1.57	-	1.02	M30 x 2	21



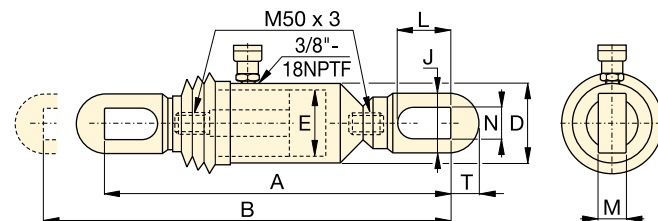
BRP106C




BRP306



BRP106L



BRP606

Cylinder Capacity tons (maximum)	Stroke (in)	Model Number	Cylinder Effective Area (in ²)	Oil Capacity (in ³)	Coll. Height A (in)	Ext. Height B (in)	Outside Dia. D (in)	Cyl. Bore Dia. E (in)	Link Height J (in)	Link Opening L (in)	Link Thickness M (in)	Link Width N (in)	Slot to Link End T (in)	 (lbs)
10 (11.6)	5.91	BRP106C	2.45	14.58	23.66	29.57	3.35	2.13	4.13	3.43	1.18	1.38	1.28	34
	5.91	BRP106L	2.45	14.58	22.56	28.46	3.35	2.13	2.52	4.69	0.87	1.19	1.26	29
30 (35.96)	6.06	BRP306	7.19	43.63	43.71	49.71	5.39	3.50	4.49	6.10	1.38	1.54	2.17	139
60 (55.8)	6.02	BRP606	11.17	67.02	28.28	34.28	5.51	4.33	5.12	5.93	1.58	1.89	2.56	129