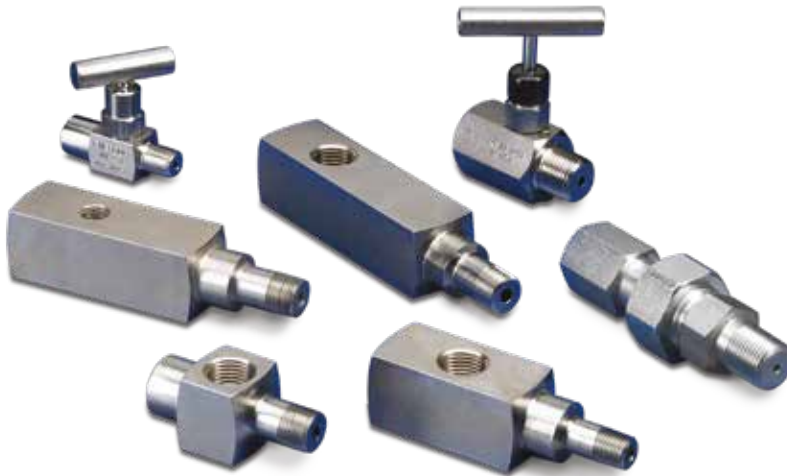


▼ Shown from left to right: GA3, V91, GA1, GA2, GA4, NV251, GA918

## GA, NV, V Series

Maximum Operating Pressure:

**10,000 psi**



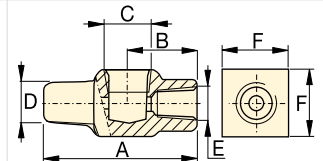
▼ A gauge is easily installed into your hydraulic system using a gauge adaptor.



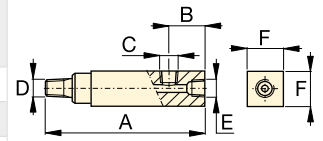
### Gauge Adaptors (GA-Series)

- For easy mounting of a pressure gauge onto your system
- Male end screws into pump or cylinder port, female end accepts hose or coupler, 3<sup>rd</sup> port is for gauge connection
- GA918 provides for swivel connection
- Simplifies gauge installation and reading.

Model Number	Gauge Port (NPTF)	Male End (NPTF)	Female End (NPTF)	Dimensions (in)					
				A	B	C	D	E	F
GA1	1/2"	3/8"	3/8"	2.81	1.24	1/2" NPTF	3/8" NPTF	3/8" NPTF	1.25
GA2	1/2"	3/8"		6.10	1.38	1/2" NPTF	3/8" NPTF	3/8" NPTF	1.25
GA3	1/4"	3/8"		5.25	1.38	1/4" NPTF	3/8" NPTF	3/8" NPTF	1.25
GA4	1/2"	1/4"		4.38	1.38	1/2" NPTF	1/4" NPTF	3/8" NPTF	1.25



GA1



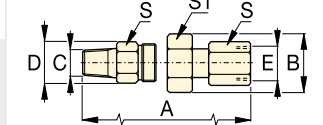
GA2, GA3, GA4



### Swivel Adaptor (GA918)

- Simplifies gauge installation and reading.

Model Number	Dimensions (in)						
	A	B	C	D	E	S	S1
GA918	4.62	1.72	1/2" NPTF	1.30	1/2" NPTF	1.13	1.50



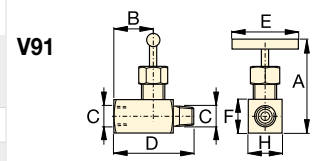
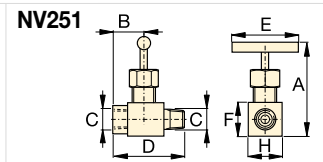
GA918



### Needle Valves (V- and NV-Series)

- Both NV251 and V91 provide positive shut-off
- 316 stainless steel stem, 24 threads/in (NV251).

Model Number	Orifice (in)	Thread Size	Dimensions (in)						
			A	B	C	D	E	F	H
NV251	0.17	1/4" NPTF	2.24	1.14	1/4" NPTF	2.24	1.81	0.75	0.75
V91	0.19	1/2" NPTF	3.50	1.26	1/2" NPTF	2.52	1.26	1.46	1.46



V91