

▼ HPT1500



## HPT Series

Reservoir Capacity:

**155 in<sup>3</sup>**

Flow at Rated Pressure:

**0.037 in<sup>3</sup>/stroke**

Maximum Operating Pressure:

**21,750 psi**



### Applications

The hand pump is ideally suited for use with hydraulic bolt tensioning tools and hydraulic nuts.

Page: **219**



### Ultra-high pressure

This pump operates at ultra-high pressure, use only the specified fittings and hoses designed for these pressures.

Page: **307**



### Bolt Tensioning Theory

See more on tensioning operation and procedures in our "Yellow Pages".

Page: **414**



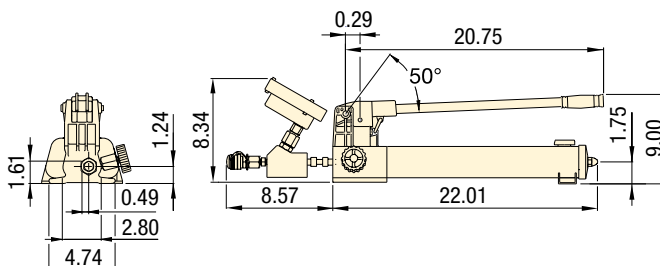
### Bolting Integrity Software

The software offers Tool selection, Bolt Load calculations and Tool pressure settings, as well as, a combined


Application data sheet and Joint completion report. Custom Joint information can also be entered.

Page: **416**

- Lightweight and portable high-pressure hand pump
- Two-speed operation displaces a larger volume of oil per stroke, reducing cycle times for many testing applications
- Includes a pressure gauge and coupler for direct connection to Enerpac Bolt Tensioners
- Integrated relief valve set at 21,750 psi.



### 21,750 PSI ULTRA-HIGH PRESSURE PUMP

Pump Type	Useable Oil Capacity (in <sup>3</sup> )	Model Number	Pressure Rating (psi)		Oil Displacement per Stroke (in <sup>3</sup> )		High-Pressure Oil Port with female coupler	 (lbs)
			1st stage	2nd stage	1st stage	2nd stage		
Two-Speed	155	<b>HPT1500</b>	200	21,750	0.99	0.037	1/4" BSPP + BR150	19.0