

FIFE SHIFTA-ROLL POSITIONING STANDS

MAXCESS

MAGPOWR



TIDLAND

Shifta-Roll Positioning Stands provide accurate edge alignment for Unwind and Rewind guiding. Powered by electromechanical actuators or hydraulic cylinders, these stands were developed to accommodate or replace existing roll stands that would not otherwise lend themselves to automatic guiding applications.

Capable of handling loads up to 2359 kg (5,200 lbs), these durable stands feature two raceway bases, hardened raceroad supports, and carrier blocks with ball bushings or Teflon bushings. Available with or without uprights, or as raceway base assemblies, the Shifta-Roll Positioning Stand easily adapts to new or existing machinery.



GENERAL SPECIFICATIONS

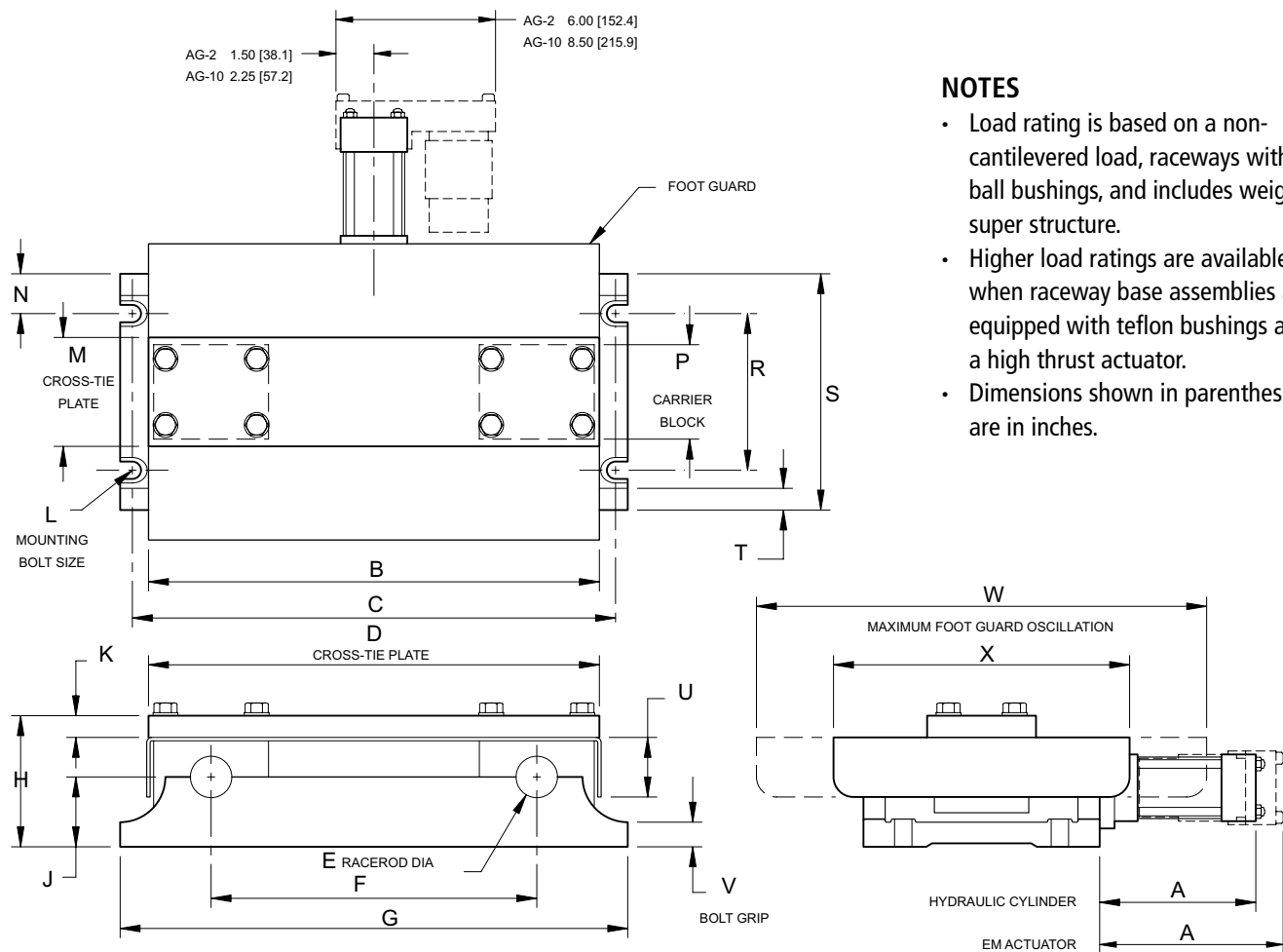
Product Name:
Shifta-Roll Positioning
Stands

Standard Stroke Range:
126 mm to 228 mm
(5 inches to 9 inches)

Load Capacity:
Up to 2,359 kg (5,200 lbs)

KEY FEATURES

- Reliable, accurate edge alignment for Unwind and Rewind guiding
- Electromechanical or hydraulic system operation
- Fast, accurate web positioning
- Easily adapts to new or existing machinery
- Durable construction for low maintenance and long-lasting reliability
- Compatible with all standard Fife sensors and controllers
- Sensor selection is based on web material and system requirements
- Optional Servo-Center available to speed setup and threading
- Custom designed and manufactured according to your specific application requirements



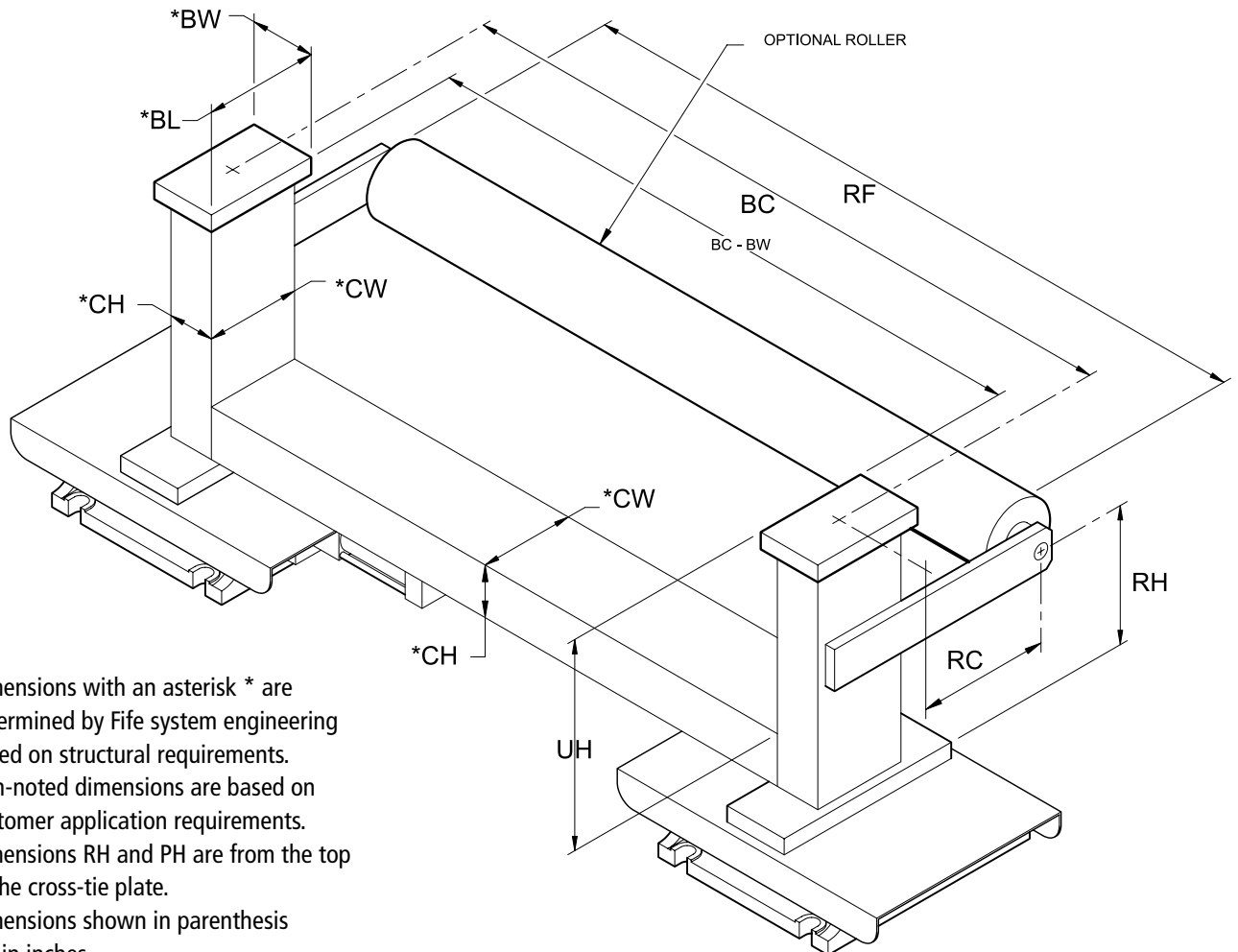
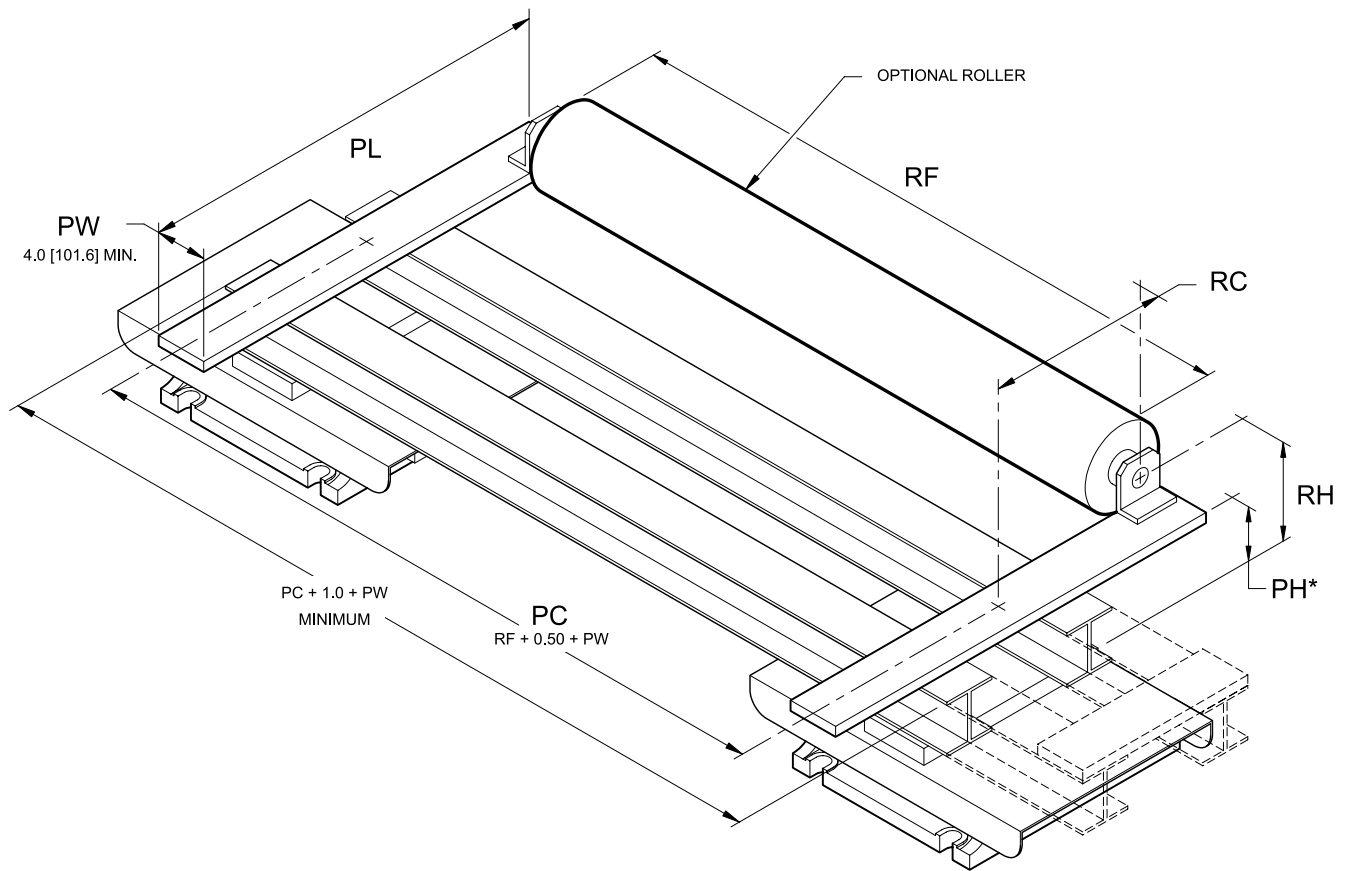
NOTES

- Load rating is based on a non-cantilevered load, raceways with all ball bushings, and includes weight of super structure.
- Higher load ratings are available when raceway base assemblies are equipped with teflon bushings and a high thrust actuator.
- Dimensions shown in parenthesis are in inches.

MODEL NO.	CYLINDER BORE inches (mm)	ACTUATOR MODEL	ACTUATOR STROKE inches (mm)	TOTAL LOAD lbs (kg)	HYDRAULIC CYLINDER inches (mm)	A AG-2-EM ACTUATOR inches (mm)	A AG-10-EM ACTUATOR inches (mm)	B	C	D	E	F	G	H
KWB	1.5 TO 2.5 (38 TO 64)	AG-2 AG-10	5	626 (284)	9.20 (234)	10.05 (256)	13.94 (354)	15.80 (401)	15.75 (400)	15.00 (381)	1.00 (25)	12.00 (305)	17.00 (432)	5.62 (143)
KWA-9	1.5 TO 2.5 (38 TO 64)	AG-2 AG-10	9	625 (284)	13.20 (335)	14.05 (357)	17.94 (456)	15.80 (401)	15.75 (400)	15.00 (381)	1.00 (25)	12.00 (305)	17.00 (432)	5.62 (143)
KHWA	1.5 TO 2.5 (38 TO 64)	AG-2 AG-10	5	1200 (544)	9.30 (236)	10.05 (256)	13.94 (354)	20.00 (508)	21.00 (533)	19.50 (495)	1.50 (38)	15.00 (381)	22.00 (559)	5.75 (146)
KHWA-9	1.5 TO 2.5 (38 TO 64)	AG-2 AG-10	9	1200 (544)	13.30 (338)	14.05 (357)	17.94 (456)	20.00 (508)	21.00 (533)	19.50 (495)	1.50 (38)	15.00 (381)	22.00 (559)	5.75 (146)
KHWA-9-T2	1.5 TO 2.5 (38 TO 64)	AG-10	6	2400 (1089)	10.30 (262)	N/A	14.94 (379)	20.00 (508)	21.00 (533)	19.50 (495)	1.50 (38)	15.00 (381)	22.00 (559)	5.75 (146)
KXWA	2 TO 3.25 (51 TO 83)	AG-10	5	3600 (1633)	10.30 (262)	N/A	13.94 (354)	27.20 (691)	28.88 (734)	26.00 (660)	2.50 (64)	20.00 (508)	30.00 (762)	8.12 (206)
KXWB	2 TO 3.25 (51 TO 83)	AG-10	5	3600 (1633)	11.50 (292)	N/A	13.94 (354)	38.30 (973)	38.63 (981)	37.00 (940)	2.50 (64)	30.00 (762)	40.00 (1016)	8.87 (225)
KYWA	2 TO 3.25 (51 TO 83)	AG-10	5	5200 (2359)	11.50 (292)	N/A	13.94 (354)	38.30 (973)	38.63 (981)	37.00 (940)	3.00 (76)	30.00 (762)	40.00 (1016)	8.87 (225)

TABLE CONT.

MODEL NO.	J inches (mm)	K inches (mm)	L inches (mm)	M inches (mm)	N inches (mm)	P inches (mm)	R inches (mm)	S inches (mm)	T inches (mm)	U inches (mm)	V inches (mm)	W inches (mm)	X inches (mm)
KWB	2.50 (64)	1.00 (25)	5/8 (16)	4.00 (102)	2.19 (56)	2.50 (64)	6.00 (152)	10.38 (264)	1.00 (25)	1.40 (36)	1.19 (30)	21.0 (533)	16.0 (406)
KWA-9	2.50 (64)	1.00 (25)	5/8 (16)	4.00 (102)	2.13 (54)	2.50 (64)	10.00 (254)	14.25 (362)	1.00 (25)	1.40 (36)	1.19 (30)	32.8 (833)	23.8 (605)
KHWA	3.00 (76)	1.00 (25)	5/8 (16)	6.00 (152)	1.81 (46)	3.75 (95)	8.00 (203)	11.63 (295)	1.00 (25)	2.70 (69)	1.12 (28)	22.0 (559)	17.0 (432)
KHWA-9	3.00 (76)	1.00 (25)	5/8 (16)	6.00 (152)	1.88 (48)	3.75 (95)	12.00 (305)	15.75 (400)	1.00 (25)	2.70 (69)	1.12 (28)	34.3 (871)	25.3 (643)
KHWA-9-T2	3.00 (76)	1.00 (25)	5/8 (16)	6.00 (152)	1.88 (48)	6.75 (171)	12.00 (305)	15.75 (400)	1.00 (25)	2.70 (69)	1.12 (28)	28.3 (719)	22.3 (566)
KXWA	4.50 (114)	1.00 (25)	5/8 (16)	6.00 (152)	2.25 (57)	6.00 (152)	10.00 (254)	14.50 (368)	1.25 (32)	4.10 (104)	1.56 (40)	25.0 (635)	20.0 (508)
KXWB	4.75 (121)	1.00 (25)	7/8 (22)	8.00 (203)	2.75 (70)	7.00 (178)	10.50 (267)	16.00 (406)	1.50 (38)	4.60 (117)	1.44 (37)	26.5 (673)	21.5 (546)
KYWA	4.75 (121)	1.00 (25)	7/8 (22)	8.00 (203)	2.75 (70)	7.00 (178)	10.50 (267)	16.00 (406)	1.50 (38)	4.60 (117)	1.44 (37)	26.5 (673)	21.5 (546)



NOTE

- Dimensions with an asterisk * are determined by Fife system engineering based on structural requirements.
- Non-noted dimensions are based on customer application requirements.
- Dimensions RH and PH are from the top of the cross-tie plate.
- Dimensions shown in parenthesis are in inches.

FIFE SHIFTA-ROLL POSITIONING STANDS

Unwind Stands

Stands shift laterally to ensure the correct edge alignment to a predetermined guide point. Depending on the sensor selected, unwind guiding sometimes require a direct mounted or slave idler(s) for proper operation.

Rewind Stands

Roll is positioned to align the edge of the approaching web to the edge of the rewind roll. The sensor chases the edge of the web and laterally positions the stand directly downstream of the incoming web.

SRS-Type Unwind Stands

A pre-engineered stand specifically designed to accommodate large polyethylene rolls used in making bags.

With a two-high light-duty roll design, this stand allows either roll to be easily loaded while the other roll is being used. Includes roll shafts and drag brakes.



NORTH AMERICA

Toll Free 800.636.3433
Tel +1.405.755.1600
Fax +1.405.755.8425
sales@maxcessintl.com
www.maxcessintl.com

SOUTH AMERICA

Tel +55.11.3959.0990
Fax +55.11.3856.0990
southamerica@maxcessintl.com
www.maxcessintl.com.br

EUROPE

Tel +49.6195.7002.0
Fax +49.6195.7002.933
sales@maxcess.eu
www.maxcess.eu

INDIA

Tel +91.22.27602633
Fax +91.22.27602634
india@maxcessintl.com
www.maxcess.in

CHINA

Tel +86.756.881.9398
Fax +86.756.881.9393
info@maxcessintl.com.cn
www.maxcessintl.com.cn

JAPAN

Tel +81.43.421.1622
Fax +81.43.421.2895
japan@maxcessintl.com
www.maxcess.jp

KOREA, TAIWAN AND SE ASIA

Tel +65.9620.3883
Fax +65.6235.4818
asia@maxcessintl.com