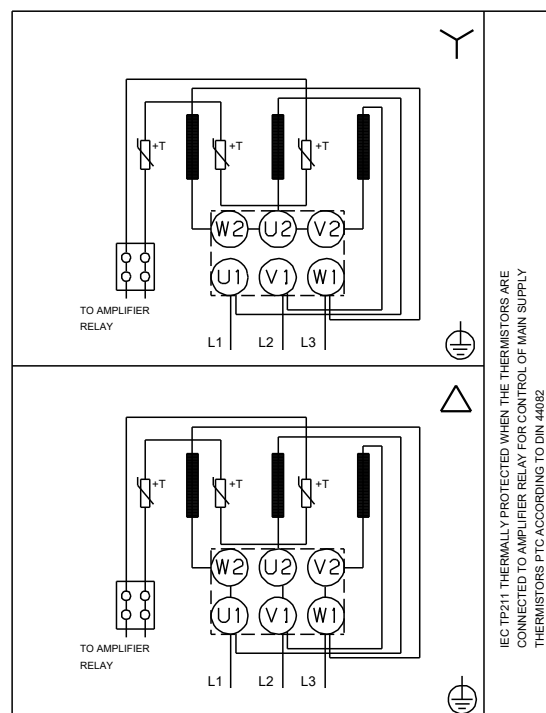
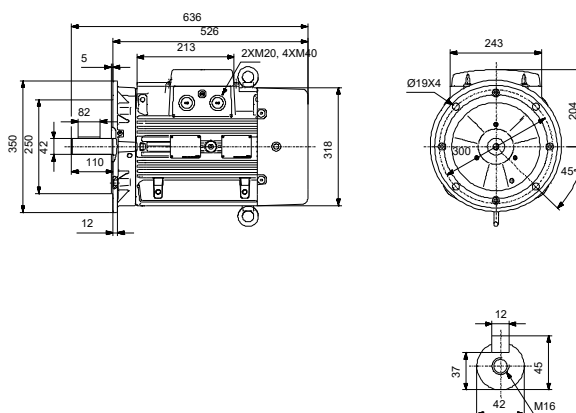


Description	Value
General information:	
Product name:	MG160LB
Product No:	On request
EAN number:	On request
Technical:	
Shaft diameter:	42 mm
Length of shaft end:	110 mm
Approvals for motor:	CE,EAC,UKCA,SEPRO,Morocco
Energy approvals for motor:	CE,CC,Singapore,Aust./N.Z.
Model:	H3
Cooling:	IC 411
Measuring Equip:	SVANTEK, SVAN 958
Cable gland entry:	2xM20 + 4xM40 knock out
Drain holes:	Yes (closed)
Installation:	
Range of ambient temperature:	-30 .. 60 °C
Flange size for motor:	FF300
Electrical data:	
Motor standard:	IEC
Motor type:	160LB
Rated power - P2:	18.5 kW
Mains frequency:	50 Hz
Rated voltage:	3 x 380-415D/660-690Y V
Rated current:	34,5-32,5/20,0-18,8 A
Maximum current consumption:	38,0-35,5/22,0-20,6 A
Starting current:	830-980 %
Cos phi - power factor:	0.89-0.85
Rated speed:	2940-2950 rpm
Rated full-load torque:	60.00-60.0 Nm
Locked-rotor torque:	200-250 %
Breakdown torque:	350-430 %
Moment of inertia:	0.058 kg m ²
IE Efficiency class:	IE3
Motor efficiency at full load:	92.4 %
Motor efficiency at 3/4 load:	93.2-93.0 %
Motor efficiency at 1/2 load:	93.2-92.2 %
Number of poles:	2
Enclosure class (IEC 34-5):	55 Dust/Jetting
Insulation class (IEC 85):	F
Built-in motor protection:	PTC
Tropic protec:	no
Thermal protec:	external
R1:	0.415 Ohm
R2:	0.415 Ohm
R3:	0.415 Ohm
Winding 1:	PHASE 1
Winding 2:	PHASE 2
Winding 3:	PHASE 3
Mount. design. acc. IEC 34-7:	IM V1/B5
Lubricant type:	UNIREX N3
Lubricant quan.:	13 g
Temperature 1:	6500 h / 40 °C
Temperature 2:	1600 h / 60 °C
Bearing insulation type N-end:	Steel bearing
Others:	
Net weight:	113 kg





Company name:

Created by:

Phone:

Date:

12/01/2026

Description	Value
Colour/Type:	NCS 9000 gloss 40+-10 /E-coat
Environmental approvals for motor: WEEE	

