

Submittal Data

PROJECT:	UNIT TAG:	QUANTITY:
REPRESENTATIVE: _____	TYPE OF SERVICE:	DATE: _____
ENGINEER:	SUBMITTED BY:	DATE:
CONTRACTOR:	APPROVED BY:	DATE:
	ORDER NO.:	DATE:

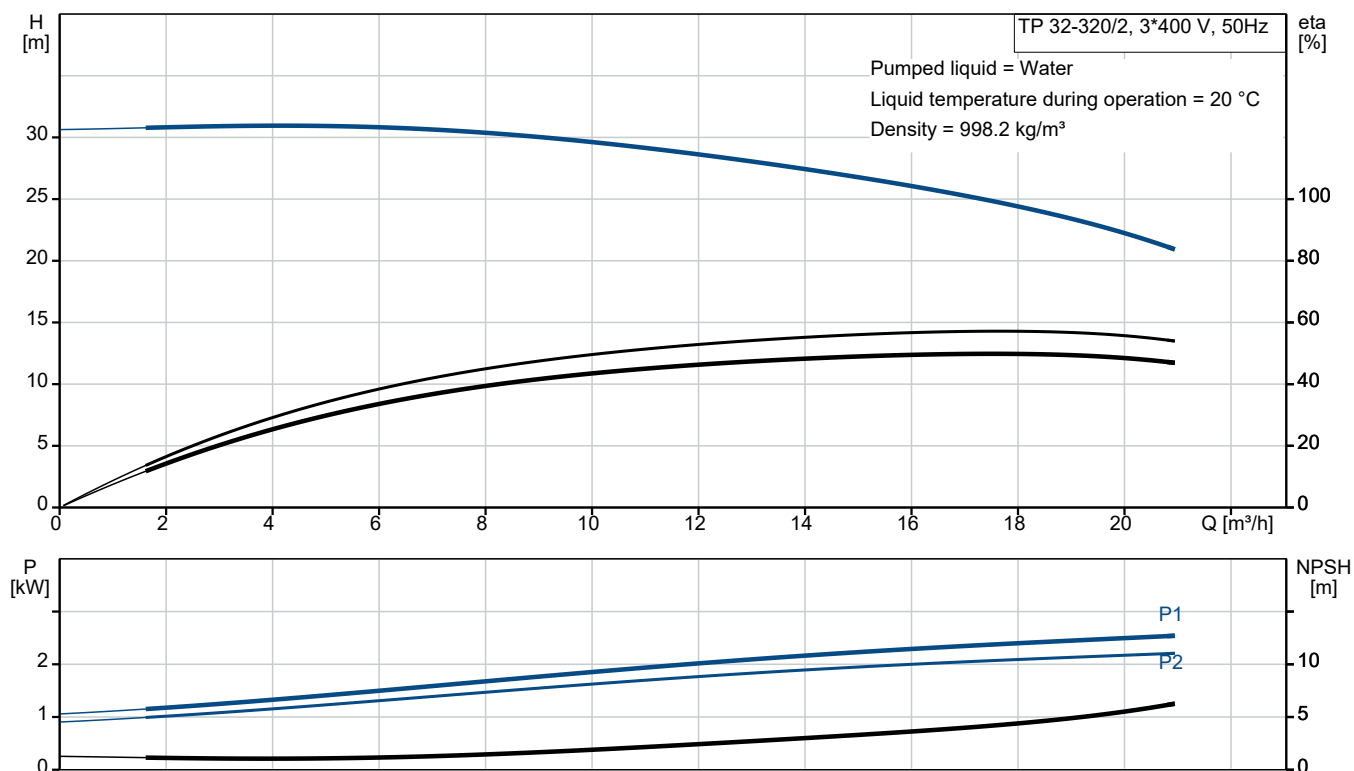


TP 32-320/2 A-F-B-BQQE-IW1

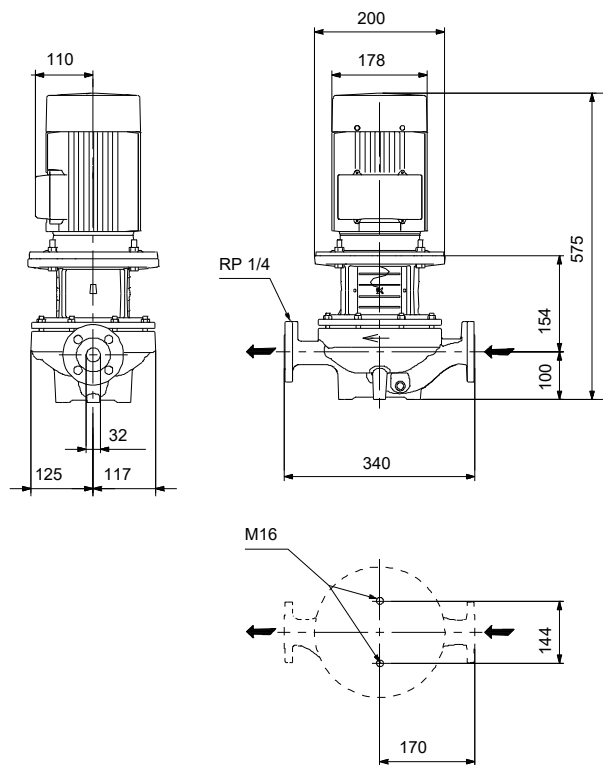
Grundfos TP pumps are single-stage, close-coupled in-line centrifugal pumps with mechanical shaft seal and primely for applications such as heating/cooling/district energy. The pumps are fitted with fixed speed motors.

Note! Product picture may differ from actual product

Conditions of Service	Pump Data	Motor Data
Liquid: Water	Max pressure at stated temp: 16 bar / 120 °C	Rated power - P2: 2.2 kW
Temperature: 20 °C	Liquid temperature range: -25 .. 120 °C	Rated voltage: 380-415D V
Specific Gravity: 1.000	Maximum ambient temperature: 60 °C	Mains frequency: 50 Hz
	Shaft seal: BQQE	Enclosure class: 55 Dust/Jetting
	Product number: On request	Insulation class: F
		Motor protection: NONE
		Motor type: 90LE
		Eta 1/1: 85.9 %



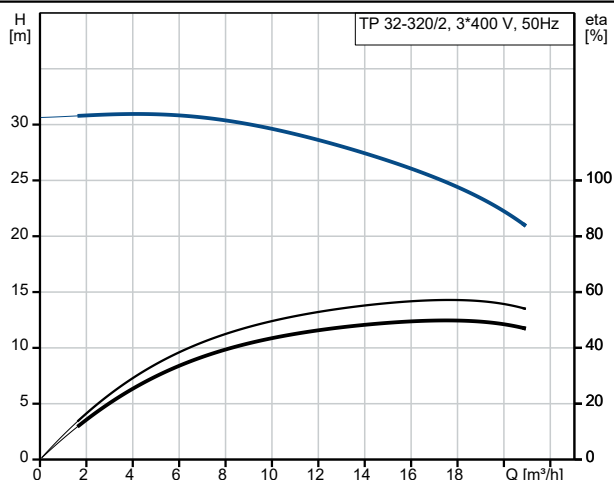
Submittal Data



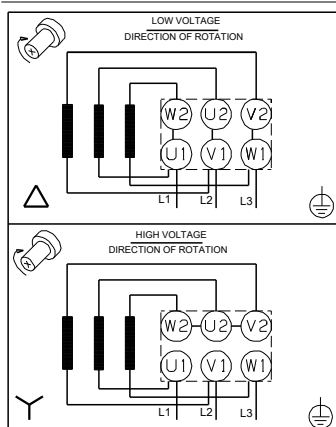
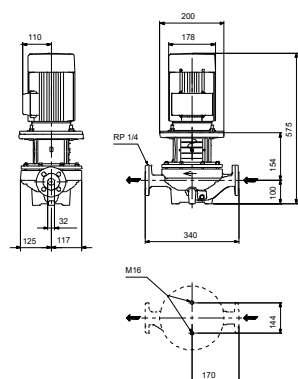
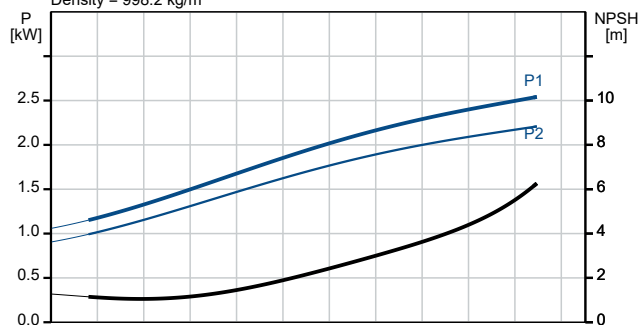
Materials:

Pump housing: Cast iron
ASTM class 35
Impeller: Bronze
CuSn10-C
Material code: B

Description	Value
General information:	
Product name:	TP 32-320/2 A-F-B-BQQE-IW1
Product No:	On request
EAN number:	On request
Technical:	
Pump speed on which pump data are based:	2927 rpm
Rated flow:	17.37 m ³ /h
Rated head:	24.66 m
Maximum head:	320 dm
Actual impeller diameter:	154 mm
Primary shaft seal:	BQQE
Code for shaft seal:	BQQE
Curve tolerance:	ISO9906:2012 3B2
Pump version:	A
Materials:	
Type key, code for materials:	B
Pump housing:	Cast iron EN-GJL-250 ASTM class 35
Impeller:	Bronze CuSn10-C
Material code:	B
Installation:	
Range of ambient temperature:	-30 .. 60 °C
Maximum operating pressure:	16 bar
Max pressure at stated temp:	16 bar / 120 °C
Type key, code for pipework connection:	F
Pipe connection standard:	EN 1092-2
Type of connection:	DIN
Size of connection:	DN 32
Pressure rating for connection:	PN 16
Port-to-port length:	340 mm
Flange size for motor:	FF165
Connect code:	F
Liquid:	
Pumped liquid:	Water
Liquid temperature range:	-25 .. 120 °C
Selected liquid temperature:	20 °C
Density:	998.2 kg/m ³
Electrical data:	
Motor type:	90LE
Rated power - P2:	2.2 kW
Mains frequency:	50 Hz
Rated voltage:	3 x 380-415D V
Rated current:	4.65 A
Starting current:	840-920 %
Rated speed:	2890-2910 rpm
IE Efficiency class:	IE3
Motor efficiency at full load:	85.9 %
Motor efficiency at 3/4 load:	88.2-87.2 %
Motor efficiency at 1/2 load:	88.0-85.5 %
Number of poles:	2
Enclosure class (IEC 34-5):	55 Dust/Jetting
Insulation class (IEC 85):	F



Pumped liquid = Water
Liquid temperature during operation = 20 °C
Density = 998.2 kg/m³





Company name:

Created by:

Phone:

Date:

11/01/2026

Description	Value
Built-in motor protection:	NONE
Motor No:	99605763
Controls:	
Frequency converter:	None
Others:	
Minimum efficiency index, MEI ≥:	0.70
Net weight:	49.9 kg
Gross weight:	61 kg
Shipping volume:	0.217 m ³

