

# Submittal Data

PROJECT:	UNIT TAG:	QUANTITY:
REPRESENTATIVE: _____	TYPE OF SERVICE:	DATE: _____
ENGINEER:	SUBMITTED BY:	DATE:
CONTRACTOR:	APPROVED BY:	DATE:
	ORDER NO.:	DATE:

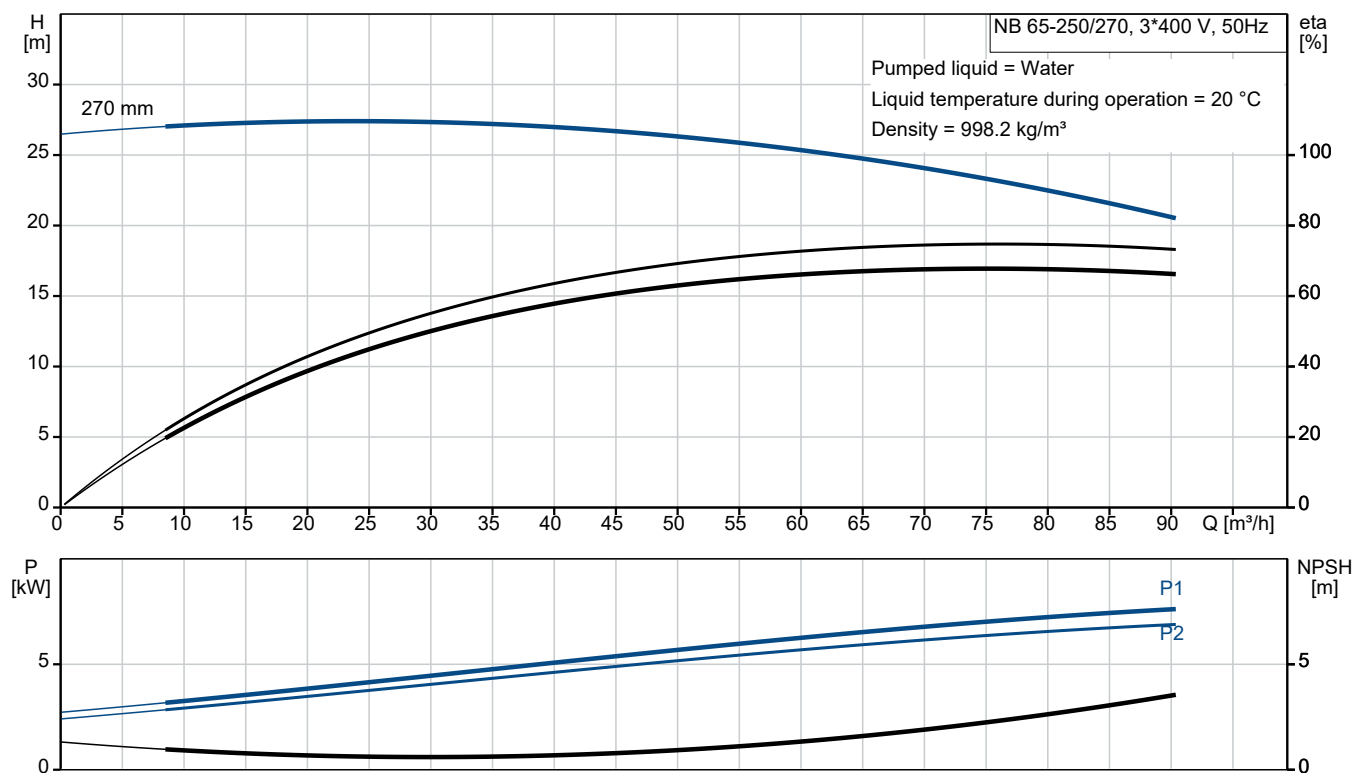


## NB 65-250/270 AAF2AESBAQEMW3

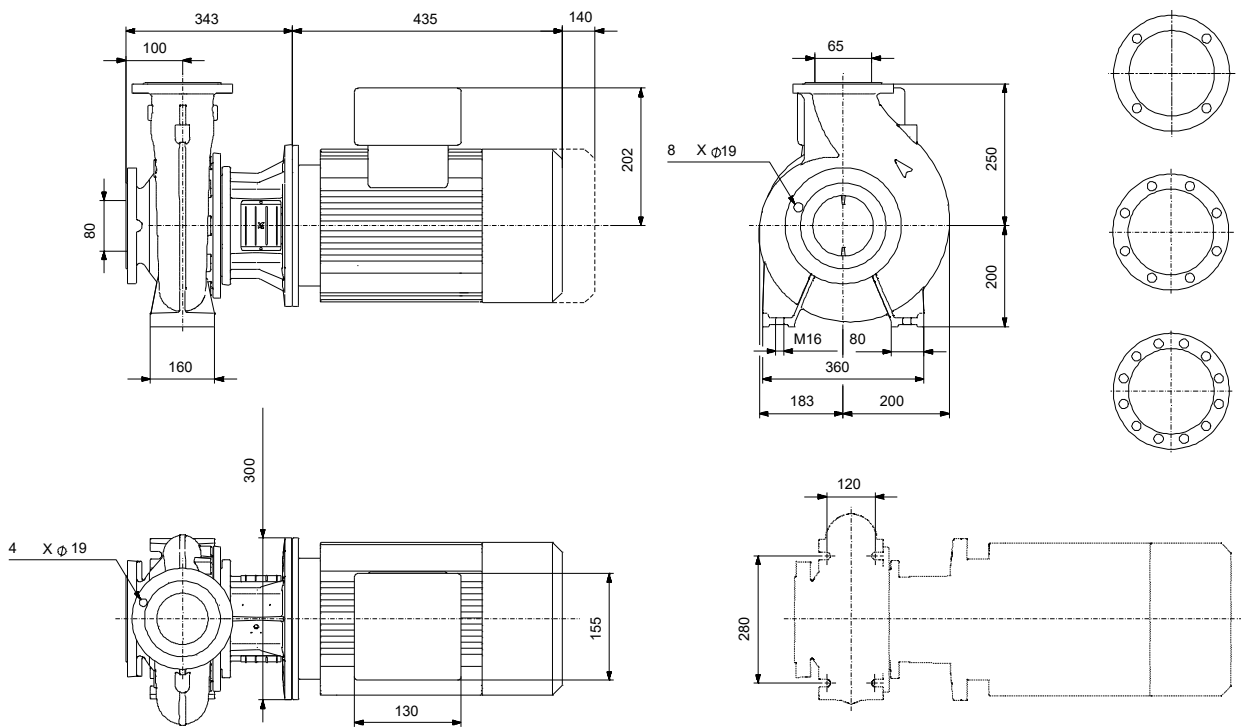
End-suction close-coupled pumps according to EN 733

Note! Product picture may differ from actual product

Conditions of Service	Pump Data	Motor Data
Liquid: Water	Liquid temperature range: 0 .. 120 °C	Rated power - P2: 7.5 kW
Temperature: 20 °C	Maximum ambient temperature: 55 °C	Rated voltage: 380-420D/660-725Y V
Specific Gravity: 1.000	Shaft seal: BAQE	Mains frequency: 50 Hz
	Product number: On request	Enclosure class: IP55
		Insulation class: F
		Motor protection: PTC
		Motor type: INNOMOTICS
		Eta 1/1: 90.4 %



# Submittal Data



## Materials:

Pump housing: Cast iron  
ASTM class 35

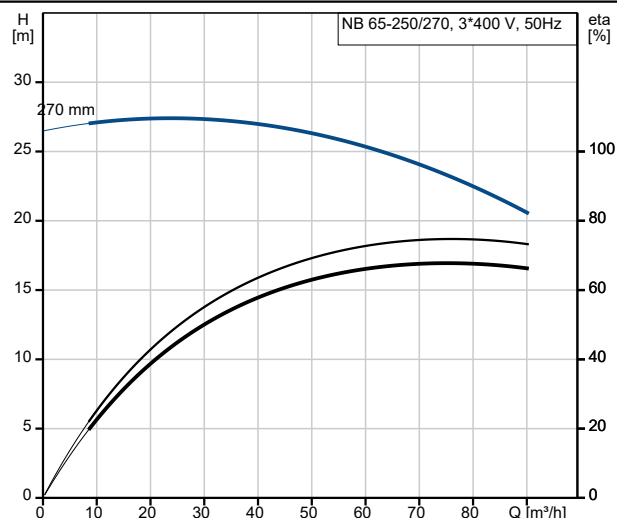
Impeller: Cast iron  
ASTM class 30  
EN-GJL-200

Material code: A  
Code for rubber: E

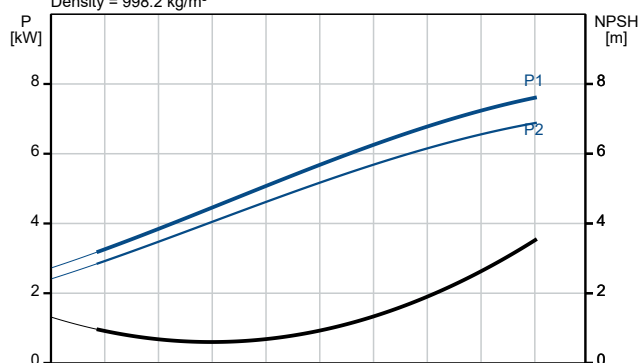
Qty.	Description
1	<p><b>NB 65-250/270 AAF2AESBAQEMW3</b> Product No.: On request</p> <p>Non-self-priming, single-stage, centrifugal volute pump designed according to ISO 5199 with dimensions and rated performance according to EN 733 (10 bar). Flanges are PN 16 with dimensions according to EN 1092-2. The pump has an axial suction port, radial discharge port, horizontal shaft and a back pull-out design enabling removal of the motor, motor stool, cover and impeller without disturbing the pump housing or pipework.</p> <p>The unbalanced rubber bellows seal is according to DIN EN 12756. The pump is close-coupled to a fan-cooled asynchronous motor.</p> <p>Controls:</p> <p>Frequency converter: None</p> <p>Pressure sensor: N</p> <p>Liquid:</p> <p>Pumped liquid: Water</p> <p>Liquid temperature range: 0 .. 120 °C</p> <p>Selected liquid temperature: 20 °C</p> <p>Density: 998.2 kg/m³</p> <p>Technical:</p> <p>Pump speed on which pump data are based: 1465 rpm</p> <p>Rated flow: 75.78 m³/h</p> <p>Rated head: 22.87 m</p> <p>Actual impeller diameter: 270 mm</p> <p>Nominal impeller diameter: 250</p> <p>Shaft seal arrangement: Single</p> <p>Primary shaft seal: BAQE</p> <p>Code for shaft seal: BAQE</p> <p>Curve tolerance: ISO9906:2012 3B2</p> <p>Bearing design: Standard</p> <p>Materials:</p> <p>Type key, code for materials: A</p> <p>Type key, code for rubber components. E = EPDM, V=FKM: E</p> <p>Pump housing: Cast iron EN-GJL-250 ASTM class 35</p> <p>Wear ring: Brass CuZn34Mn3Al2Fe1-C</p> <p>Impeller: Cast iron EN-GJL-200 ASTM class 30</p> <p>Pump house, internal coating: CED</p> <p>Shaft: Stainless steel EN 1.4301 AISI 304</p> <p>Installation:</p>

Qty.	Description
1	<p>Maximum ambient temperature: 55 °C</p> <p>Maximum operating pressure: 16 bar</p> <p>Pipe connection standard: EN 1092-2</p> <p>Size of inlet connection: DN 80</p> <p>Size of outlet connection: DN 65</p> <p>Pressure rating for connection: PN 16</p> <p>Bearing lubrication: Grease</p> <p>Pump housing with feet (Yes/No): Yes</p> <p>Support block (Yes/No): N</p> <p>Electrical data:</p> <p>Motor type: INNOMOTICS</p> <p>Rated power - P2: 7.5 kW</p> <p>Mains frequency: 50 Hz</p> <p>Rated voltage: 3 x 380-420D/660-725Y V</p> <p>Rated current: 14.3/8.3 A</p> <p>Starting current: 820 %</p> <p>Cos phi - power factor: 0.84</p> <p>Rated speed: 1465 rpm</p> <p>IE efficiency: IE3 90,4%</p> <p>IE Efficiency class: IE3</p> <p>Motor efficiency at full load: 90.4 %</p> <p>Motor efficiency at 3/4 load: 91.1 %</p> <p>Motor efficiency at 1/2 load: 90.8 %</p> <p>Number of poles: 4</p> <p>Enclosure class (IEC 34-5): IP55</p> <p>Insulation class (IEC 85): F</p> <p>Motor No: 83V15222</p> <p>Bearing insulation type N-end: N</p> <p>Others:</p> <p>Minimum efficiency index, MEI ≥: 0.70</p> <p>Net weight: 150 kg</p> <p>Gross weight: 172 kg</p> <p>Shipping volume: 0.509 m³</p> <p>Language on pump nameplate: GB</p>

Description	Value
<b>General information:</b>	
Product name:	NB 65-250/270 AAF2AESBAQEMW3
Product No:	On request
EAN number:	On request
<b>Technical:</b>	
Pump speed on which pump data are based:	1465 rpm
Rated flow:	75.78 m³/h
Rated head:	22.87 m
Actual impeller diameter:	270 mm
Nominal impeller diameter:	250
Shaft seal arrangement:	Single
Primary shaft seal:	BAQE
Shaft diameter:	32 mm
Code for shaft seal:	BAQE
Curve tolerance:	ISO9906:2012 3B2
Pump version:	A
Bearing design:	Standard
<b>Materials:</b>	
Type key, code for materials:	A
Type key, code for rubber components. E = EPDM, V=FKM:	E
Pump housing:	Cast iron EN-GJL-250 ASTM class 35
Wear ring:	Brass CuZn34Mn3Al2Fe1-C
Impeller:	Cast iron EN-GJL-200 ASTM class 30
Pump house, internal coating:	CED
Material code:	A
Code for rubber:	E
Shaft:	Stainless steel EN 1.4301 AISI 304
<b>Installation:</b>	
Maximum ambient temperature:	55 °C
Maximum operating pressure:	16 bar
Type key, code for pipework connection:	F2
Pipe connection standard:	EN 1092-2
Size of inlet connection:	DN 80
Size of outlet connection:	DN 65
Pressure rating for connection:	PN 16
Bearing lubrication:	Grease
Pump housing with feet (Yes/No):	Yes
Support block (Yes/No):	N
Connect code:	F2
<b>Liquid:</b>	
Pumped liquid:	Water
Liquid temperature range:	0 .. 120 °C
Selected liquid temperature:	20 °C
Density:	998.2 kg/m³
<b>Electrical data:</b>	
Motor type:	INNOMOTICS
Rated power - P2:	7.5 kW



Pumped liquid = Water  
Liquid temperature during operation = 20 °C  
Density = 998.2 kg/m³





Company name:

Created by:

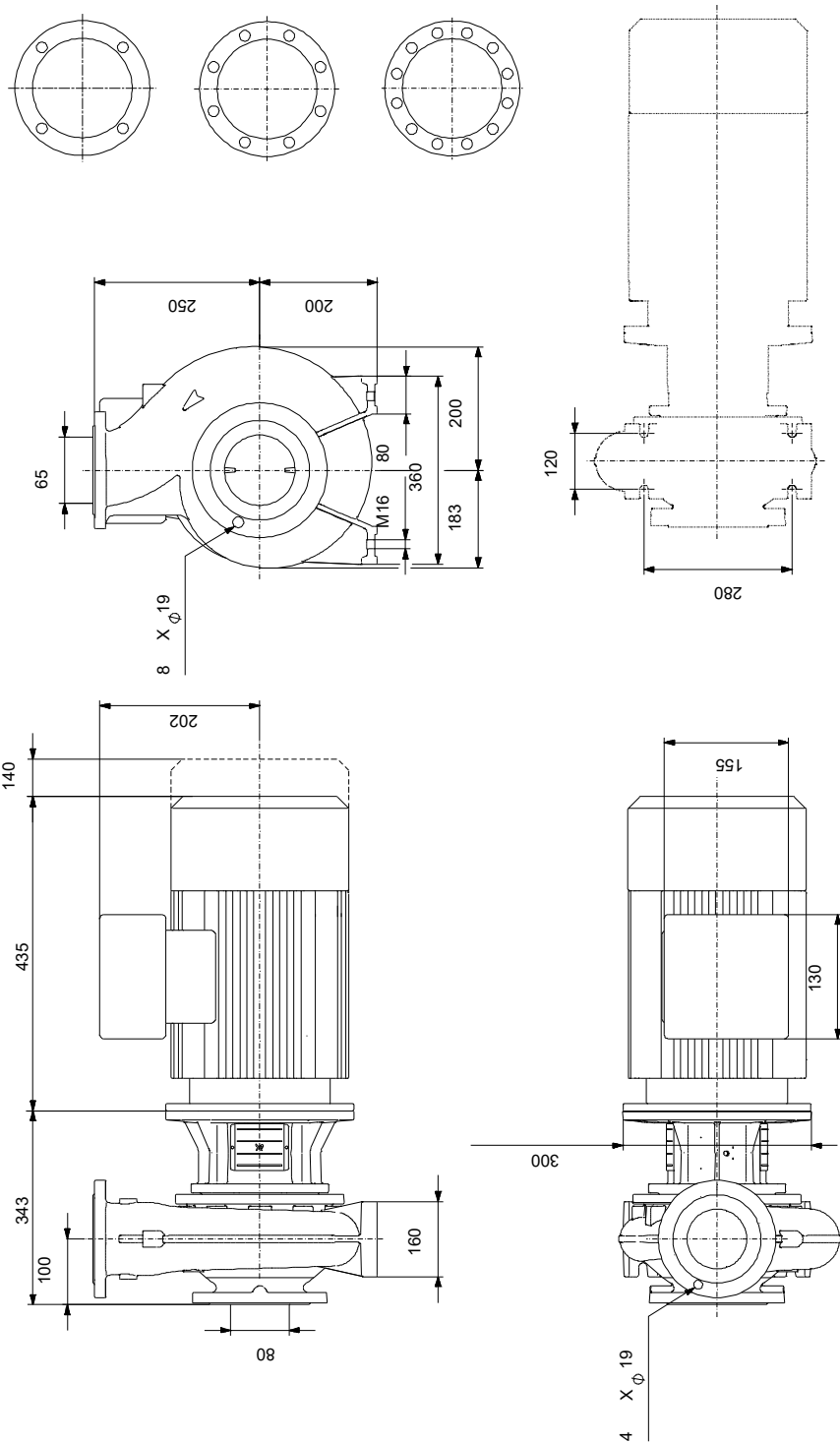
Phone:

Date:

24/01/2026

Description	Value
Mains frequency:	50 Hz
Rated voltage:	3 x 380-420D/660-725Y V
Rated current:	14.3/8.3 A
Starting current:	820 %
Cos phi - power factor:	0.84
Rated speed:	1465 rpm
IE efficiency:	IE3 90,4%
IE Efficiency class:	IE3
Motor efficiency at full load:	90.4 %
Motor efficiency at 3/4 load:	91.1 %
Motor efficiency at 1/2 load:	90.8 %
Number of poles:	4
Enclosure class (IEC 34-5):	IP55
Insulation class (IEC 85):	F
Built-in motor protection:	PTC
Motor No:	<a href="#">83V15222</a>
Mount. design. acc. IEC 34-7:	IM V1
Bearing insulation type N-end:	N
<b>Controls:</b>	
Frequency converter:	None
Pressure sensor:	N
<b>Others:</b>	
Minimum efficiency index, MEI ≥:	0.70
Net weight:	150 kg
Gross weight:	172 kg
Shipping volume:	0.509 m³
Language on pump nameplate:	GB

## On request NB 65-250/270 AAF2AESBAQEMW3 50 Hz



Note! All units are in [mm] unless others are stated.  
Disclaimer: This simplified dimensional drawing does not show all details.

