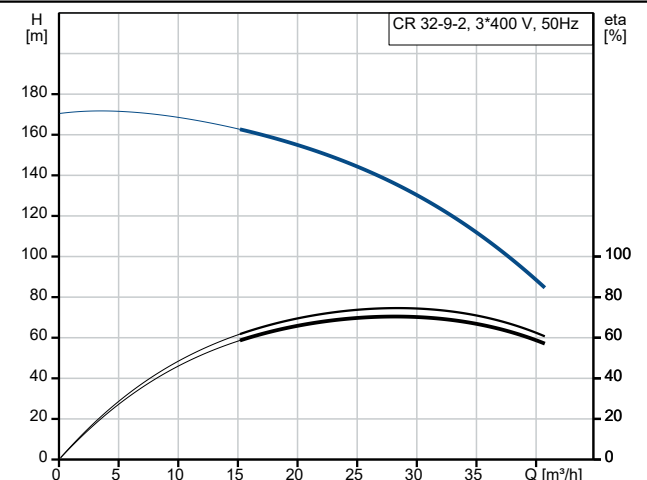
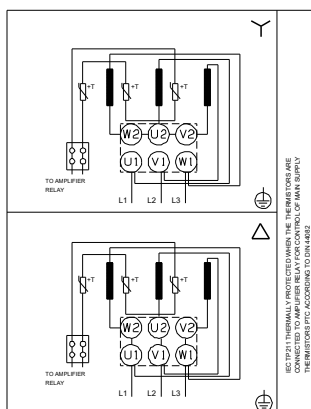
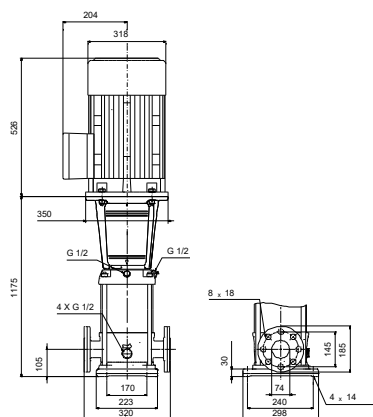
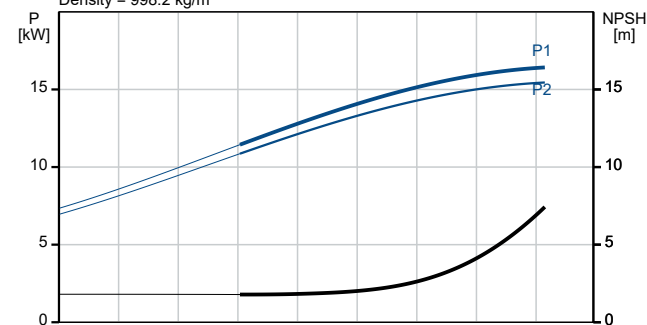


| Description | Value |
|--------------------------------------------------------|----------------------------------------------------------------|
| General information: | |
| Product name: | CR 32-9-2 A-F-A-V-HQQV |
| Product No: | On request |
| EAN number: | On request |
| Technical: | |
| Pump speed on which pump data are based: | 2934 rpm |
| Rated flow: | 30 m ³ /h |
| Rated head: | 131.6 m |
| Maximum head: | 168 m |
| Stages: | 9 |
| Impellers: | 9 |
| Number of reduced-diameter impellers: | 2 |
| Low NPSH: | N |
| Pump orientation: | Vertical |
| Shaft seal arrangement: | Single |
| Primary shaft seal: | HQQV |
| Code for shaft seal: | HQQV |
| Approvals: | CE,EAC,UKCA,SEPRO, |
| Approvals for drinking water: | WRAS |
| Curve tolerance: | ISO9906:2012 3B |
| Pump version: | A |
| Model: | B |
| Materials: | |
| Type key, code for materials: | A |
| Type key, code for rubber components. E = EPDM, V=FKM: | V |
| Base: | Cast iron EN 1563 EN-GJS-500-7 |
| Impeller: | ASTM A536 80-55-06 Stainless steel EN 1.4301 AISI 304 |
| Material code: | A |
| Code for rubber: | V |
| Bearing: | SIC |
| Support bearing: | Graflon |
| Installation: | |
| Maximum ambient temperature: | 60 °C |
| Maximum operating pressure: | 30 bar |
| Max pressure at stated temp: | 30 bar / 90 °C 30 bar / -20 °C |
| Type key, code for pipework connection: | F |
| Type of connection: | DIN |
| Size of inlet connection: | DN 65 |
| Size of outlet connection: | DN 65 |
| Pressure rating for connection: | PN 40 |
| Flange size for motor: | FF300 |
| Terminal box position: | 6 |
| Connect code: | F |
| Liquid: | |
| Pumped liquid: | Water |
| Liquid temperature range: | -20 .. 90 °C |
| Selected liquid temperature: | 20 °C |
| Density: | 998.2 kg/m ³ |



Pumped liquid = Water
Liquid temperature during operation = 20 °C
Density = 998.2 kg/m³





Company name:

Created by:

Phone:

Date:

12/01/2026

| Description | Value |
|----------------------------------|----------------------------|
| Electrical data: | |
| Motor standard: | IEC |
| Motor type: | 160LB |
| Rated power - P2: | 18.5 kW |
| Power (P2) required by pump: | 18.5 kW |
| Mains frequency: | 50 Hz |
| Rated voltage: | 3 x 380-415D/660-690Y V |
| Rated current: | 34,5-32,5/20,0-18,8 A |
| Starting current: | 830-980 % |
| Cos phi - power factor: | 0.89-0.85 |
| Rated speed: | 2940-2950 rpm |
| IE Efficiency class: | IE3 |
| Motor efficiency at full load: | 92.4 % |
| Motor efficiency at 3/4 load: | 93.2-93.0 % |
| Motor efficiency at 1/2 load: | 93.2-92.2 % |
| Number of poles: | 2 |
| Enclosure class (IEC 34-5): | 55 Dust/Jetting |
| Insulation class (IEC 85): | F |
| Built-in motor protection: | PTC |
| Motor No: | 85U17528 |
| Controls: | |
| Terminal box position: | 6 |
| Frequency converter: | None |
| Others: | |
| Minimum efficiency index, MEI ≥: | 0.70 |
| Net weight: | 198 kg |
| Gross weight: | 237 kg |
| Shipping volume: | 0.805 m³ |

