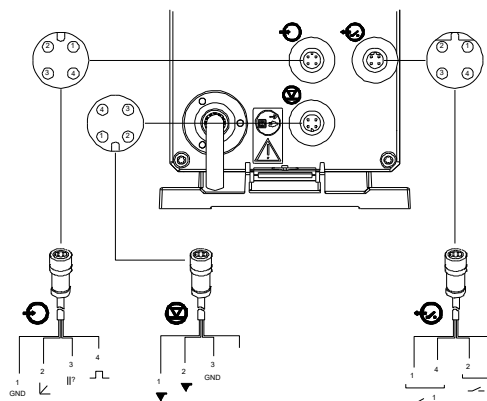
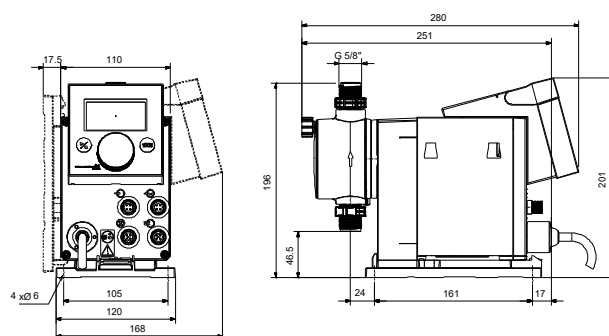
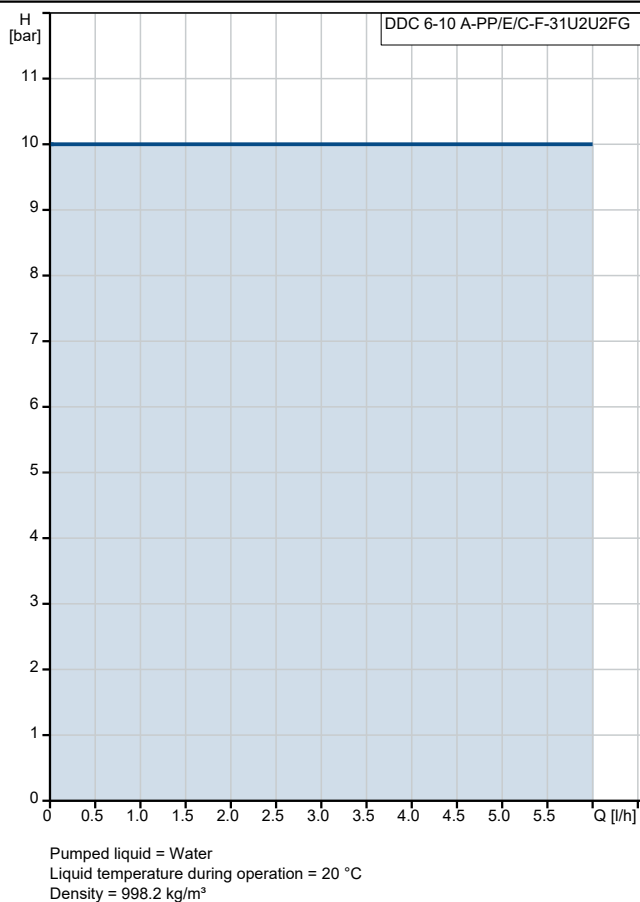


Description	Value
General information:	
Product name:	DDC 6-10 A-PP/E/C-F-31U2U2FG
Product No:	On request
EAN number:	On request
Technical:	
Type key:	DDC 6-10 A-PP/E/C-F-31U2U2FG
Max. Flow:	6 l/h
Max. flow in slow mode 50%:	3 l/h
Max. flow in slow mode 25%:	1.5 l/h
Min flow:	6.0 ml/h
Turn-down ratio:	1:1000
Approvals:	CE, CSA-US, EAC, RCM
Valve type:	Standard
Maximum viscosity at 100 %:	50 mPas
Maximum viscosity in slow mode 50 %:	1800 mPas
Maximum viscosity in slow mode 25 %:	2500 mPas
Accuracy of repeatability:	1 %
Materials:	
Dosing head:	PP (Polypropylene)
Valve ball:	Ceramic
Gasket:	EPDM
Installation:	
Range of ambient temperature:	0 .. 45 °C
Maximum operating pressure:	10 bar
Installation set (Yes/No):	NO
Installation type:	No installation set
Pump inlet:	4/6, 6/9, 6/12, 9/12 mm
Pump outlet:	4/6, 6/9, 6/12, 9/12 mm
Max. Suction lift during operation:	6 m
Max. Suction lift during priming:	2 m
Liquid:	
Pumped liquid:	Water
Liquid temperature range:	0 .. 45 °C
Selected liquid temperature:	20 °C
Density:	998.2 kg/m³
Electrical data:	
Maximum power input - P1:	22 W
Mains frequency:	50 / 60 Hz
Rated voltage:	1 x 100-240 V
Enclosure class (IEC 34-5):	IP65 / TYPE 4X
Length of cable:	1.5 m
Type of cable plug:	EU
Inrush current:	25A at 230V for 2ms
Controls:	
Control variant:	A
Control panel:	Front-Mounted
Level control:	YES
Pulse control:	YES
Ext. Stop input:	Yes
Output relays:	0
Others:	
Net weight:	2 kg
Gross weight:	3 kg
Colour:	RED





Company name:

Created by:

Phone:

Date:

12/01/2026

Description	Value
Finnish LVI No.:	4981112

