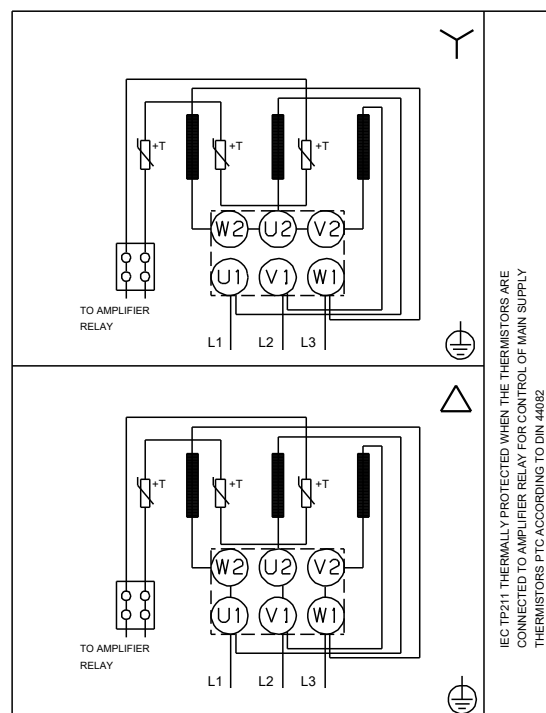
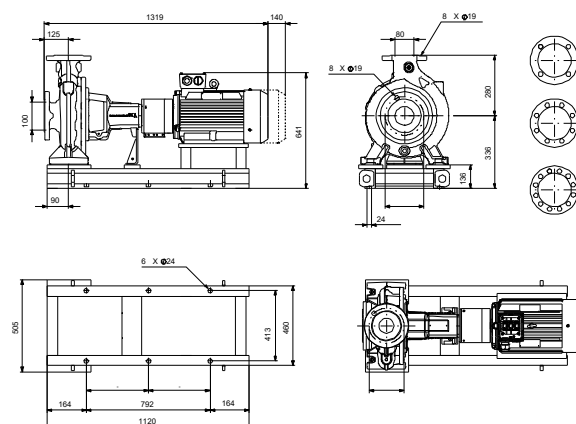


| Description  | Value  |
|--|--|
| <b>General information:</b>                            |  |
| Product name:  | NK 80-225/171<br>AA1F2S3ESBQQRW1               |
| Product No:  | On request                                     |
| EAN number:  | On request                                     |
| <b>Technical:</b>                                      |  |
| Pump speed on which pump data are based:               | 2970 rpm                                       |
| Rated flow:  | 178.2 m³/h                                     |
| Pump with motor (Yes/No):                              | Y  |
| Rated head:  | 35.7 m   |
| Actual impeller diameter:                              | 171 mm   |
| Nominal impeller diameter:                             | 225  |
| Primary shaft seal:                                    | BQQE   |
| Shaft diameter:  | 32 mm  |
| Code for shaft seal:                                   | BQQE   |
| Mechanical seal type:                                  | Single   |
| Curve tolerance:                                       | ISO9906:2012 2B                                |
| Pump version:  | A1   |
| Bearing design:  | Standard                                       |
| <b>Materials:</b>                                      |  |
| Type key, code for materials:                          | S3   |
| Type key, code for rubber components. E = EPDM, V=FKM: | E  |
| Pump housing:  | Cast iron<br>EN 1561 EN-GJL-250<br>ASTM A48-35 |
| Impeller:  | Stainless steel<br>EN 1.4308<br>ASTM A351 CF8  |
| Pump house, internal coating:                          | Painting                                       |
| Material code:   | S3   |
| Code for rubber:                                       | E  |
| Shaft:   | Steel<br>EN 1.0503/1.4301<br>AISI 1045/304     |
| <b>Installation:</b>                                   |  |
| Maximum ambient temperature:                           | 40 °C  |
| Range of ambient temperature:                          | -15 .. 40 °C                                   |
| Maximum operating pressure:                            | 16 bar   |
| Type key, code for pipework connection:                | F  |
| Pipe connection standard:                              | EN 1092-2                                      |
| Type of inlet connection:                              | DIN  |
| Type of outlet connection:                             | DIN  |
| Size of inlet connection:                              | DN 100   |
| Size of outlet connection:                             | DN 80  |
| Pressure rating for connection:                        | PN 16  |
| Coupling type:   | Flexible w/o spacer                            |
| Base frame design:                                     | C-channel                                      |
| Code for base frame:                                   | 312  |
| Grouting (Yes/No):                                     | N  |
| Connect code:  | F  |
| <b>Liquid:</b>   |  |
| Liquid temperature range:                              | -25 .. 120 °C                                  |
| <b>Electrical data:</b>                                |  |
| Motor type:  | 200LA  |
| Rated power - P2:                                      | 30 kW  |





Company name:

Created by:

Phone:

Date:

12/01/2026

| Description                      | Value                         |
|----------------------------------|-------------------------------|
| Mains frequency:                 | 50 Hz                         |
| Rated voltage:                   | 3 x 380-400D/660-690Y V       |
| Rated current:                   | 54,9-52,1/31,6-30,2 A         |
| Starting current:                | 760 %                         |
| Cos phi - power factor:          | 0.89                          |
| Rated speed:                     | 2960 rpm                      |
| IE efficiency:                   | IE3 93,3%                     |
| IE Efficiency class:             | IE3                           |
| Motor efficiency at full load:   | 93.3 %                        |
| Motor efficiency at 3/4 load:    | 93.0 %                        |
| Motor efficiency at 1/2 load:    | 91.4 %                        |
| Number of poles:                 | 2                             |
| Enclosure class (IEC 34-5):      | 55 (Protect. water jets/dust) |
| Insulation class (IEC 85):       | F                             |
| Built-in motor protection:       | PTC                           |
| Motor No:                        | <a href="#">99546152</a>      |
| Bearing insulation type N-end:   | Steel bearing                 |
| <b>Controls:</b>                 |                               |
| Frequency converter:             | None                          |
| Pressure sensor:                 | N                             |
| <b>Others:</b>                   |                               |
| Minimum efficiency index, MEI ≥: | 0.70                          |
| Net weight:                      | 386 kg                        |
| Gross weight:                    | 432 kg                        |
| Shipping volume:                 | 0.935 m <sup>3</sup>          |

