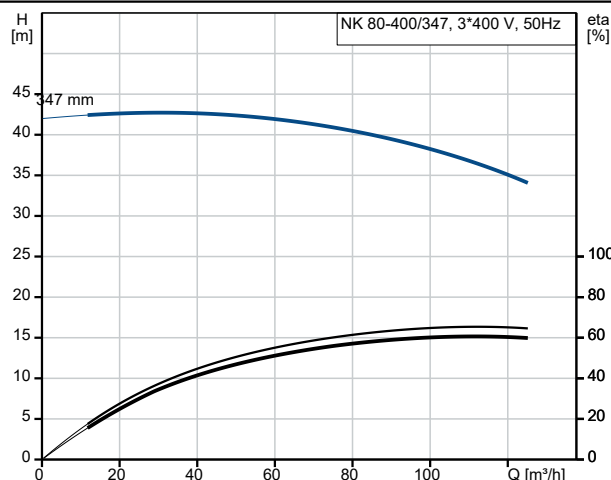
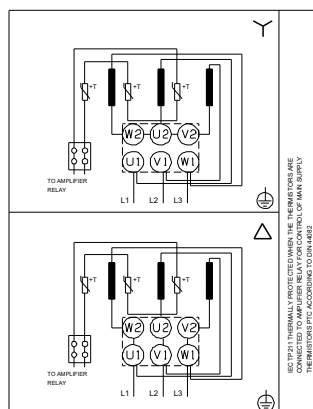
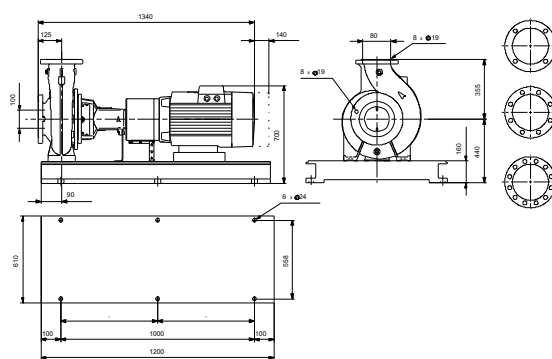
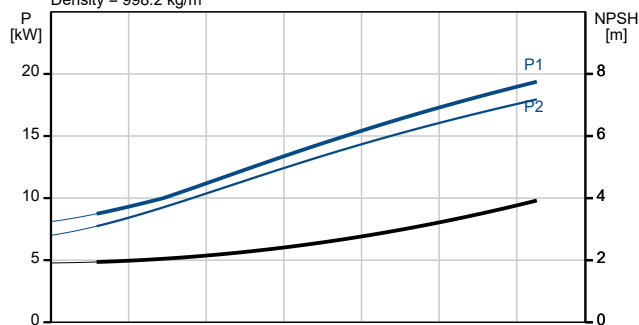


Description	Value
General information:	
Product name:	NK 80-400/347 AA1F2LESBQQEPW3
Product No:	On request
EAN number:	On request
Technical:	
Pump speed on which pump data are based:	1470 rpm
Rated flow:	114 m³/h
Pump with motor (Yes/No):	Y
Rated head:	35.97 m
Actual impeller diameter:	347 mm
Nominal impeller diameter:	400
Primary shaft seal:	BQQE
Shaft diameter:	42 mm
Code for shaft seal:	BQQE
Mechanical seal type:	Single
Curve tolerance:	ISO9906:2012 3B
Pump version:	A1
Bearing design:	Standard
Materials:	
Type key, code for materials:	L
Type key, code for rubber components. E = EPDM, V=FKM:	E
Pump housing:	Stainless steel EN 1.4517 ASTM CD4MCuN
Wear ring:	Stainless steel
Impeller:	Stainless steel EN 1.4517 ASTM CD4MCuN
Pump house, internal coating:	No coating
Material code:	L
Code for rubber:	E
Shaft:	Stainless steel EN 1.4462 SAF 2205
Installation:	
Maximum ambient temperature:	60 °C
Maximum operating pressure:	16 bar
Type key, code for pipework connection:	F
Pipe connection standard:	EN 1092-1
Type of inlet connection:	DIN
Type of outlet connection:	DIN
Size of inlet connection:	DN 100
Size of outlet connection:	DN 80
Pressure rating for connection:	PN 16
Coupling type:	Flexible w/o spacer
Base frame design:	C-channel
Code for base frame:	36
Grouting (Yes/No):	N
Connect code:	F
Liquid:	
Pumped liquid:	Water
Liquid temperature range:	-25 .. 120 °C
Selected liquid temperature:	20 °C
Density:	998.2 kg/m³



Pumped liquid = Water
Liquid temperature during operation = 20 °C
Density = 998.2 kg/m³





Company name:

Created by:

Phone:

Date:

13/01/2026

Description	Value
Electrical data:	
Motor type:	180MA
Rated power - P2:	18.5 kW
Mains frequency:	50 Hz
Rated voltage:	3 x 380-420D/660-725Y V
Rated current:	35,0-31,5/20,0-18,2 A
Starting current:	690 %
Cos phi - power factor:	0.9
Rated speed:	1470 rpm
IE efficiency:	IE3 92,6%
IE Efficiency class:	IE3
Motor efficiency at full load:	92.6 %
Motor efficiency at 3/4 load:	93.0 %
Motor efficiency at 1/2 load:	92.6 %
Number of poles:	4
Enclosure class (IEC 34-5):	55 (Protect. water jets/dust)
Insulation class (IEC 85):	F
Built-in motor protection:	PTC
Motor No:	83L16128
Bearing insulation type N-end:	Steel bearing
Controls:	
Frequency converter:	None
Pressure sensor:	N
Others:	
Minimum efficiency index, MEI ≥:	0.41
Net weight:	502 kg
Gross weight:	529 kg
Shipping volume:	0.93 m³

