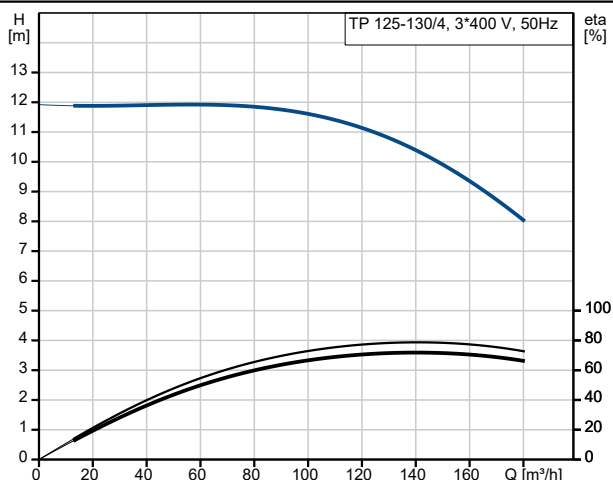
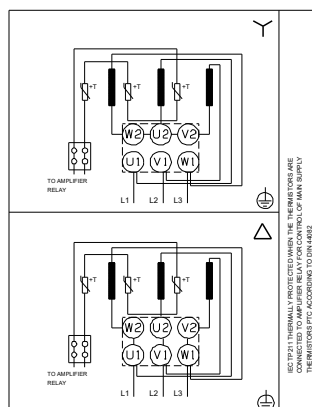
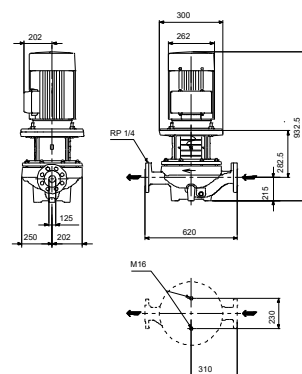
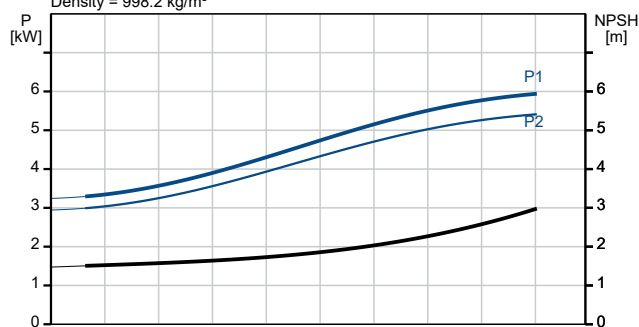


Description	Value
General information:	
Product name:	TP 125-130/4 A-F-B-BQQE-LW3
Product No:	On request
EAN number:	On request
Technical:	
Pump speed on which pump data are based:	1482 rpm
Rated flow:	140.4 m³/h
Rated head:	10.45 m
Maximum head:	130 dm
Actual impeller diameter:	194 mm
Primary shaft seal:	BQQE
Code for shaft seal:	BQQE
Curve tolerance:	ISO9906:2012 3B2
Pump version:	A
Materials:	
Type key, code for materials:	B
Pump housing:	Cast iron EN-GJL-250 ASTM class 35
Impeller:	Bronze CuSn10-C
Material code:	B
Installation:	
Range of ambient temperature:	-20 .. 55 °C
Maximum operating pressure:	16 bar
Max pressure at stated temp:	16 bar / 120 °C
Type key, code for pipework connection:	F
Pipe connection standard:	EN 1092-2
Type of connection:	DIN
Size of connection:	DN 125
Pressure rating for connection:	PN 16
Port-to-port length:	620 mm
Flange size for motor:	FF265
Connect code:	F
Liquid:	
Pumped liquid:	Water
Liquid temperature range:	-25 .. 120 °C
Selected liquid temperature:	20 °C
Density:	998.2 kg/m³
Electrical data:	
Motor type:	INNOMOTICS
Rated power - P2:	5.5 kW
Mains frequency:	50 Hz
Rated voltage:	3 x 220-240D/380-420Y V
Rated current:	18.8/10.8 A
Starting current:	850 %
Cos phi - power factor:	0.82
Rated speed:	1470 rpm
IE efficiency:	IE3 89,6%
IE Efficiency class:	IE3
Motor efficiency at full load:	89.6 %
Motor efficiency at 3/4 load:	90 %
Motor efficiency at 1/2 load:	89.5 %
Number of poles:	4



Pumped liquid = Water
Liquid temperature during operation = 20 °C
Density = 998.2 kg/m³





Company name:

Created by:

Phone:

Date:

12/01/2026

Description	Value
Enclosure class (IEC 34-5):	IP55
Insulation class (IEC 85):	F
Built-in motor protection:	PTC
Motor No:	83V05217
Controls:	
Frequency converter:	None
Others:	
Minimum efficiency index, MEI \geq :	0.49
Net weight:	199 kg
Gross weight:	228 kg
Shipping volume:	0.743 m ³

