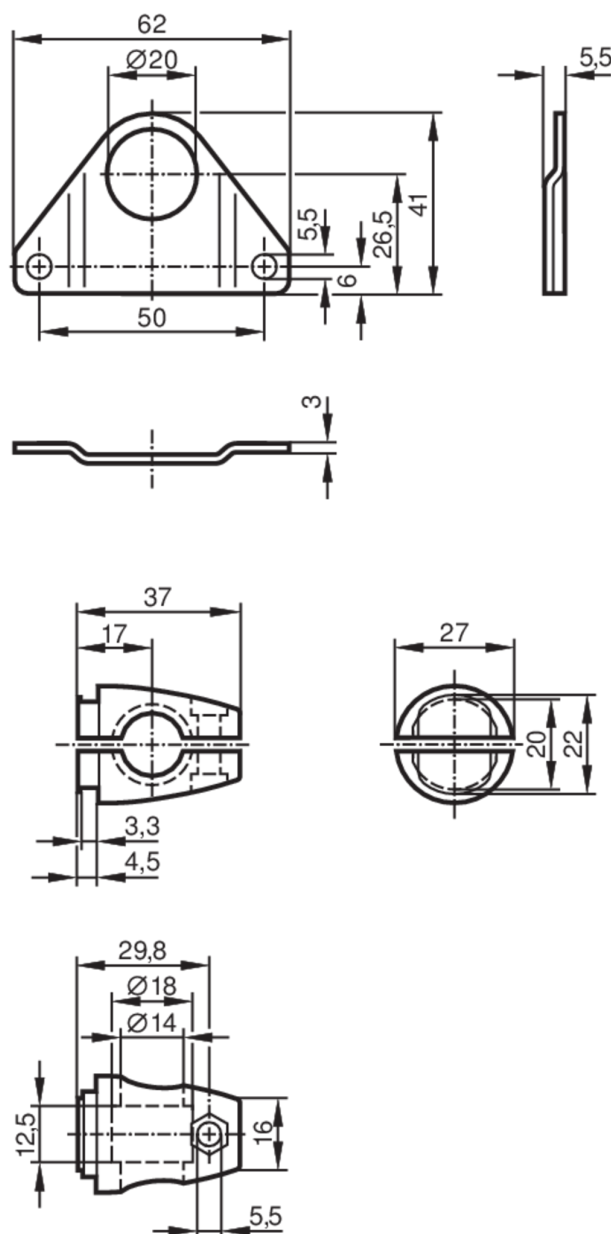


## Mounting set for photoelectric sensors

MOUNTING SET OL SMALL ROD



## Application

Design

clamp mounting

## Mechanical data

Weight

[g]

133

Type of mounting

Mounting rod; ( $\varnothing 14$  mm)

Materials

fixture: stainless steel (1.4305 / 303); Clamp: diecast zinc

## Remarks

Pack quantity

1 pcs.