

# WHEEL ALIGNMENT SYSTEMS



## THE ALIGNMENT WORK HORSE

Designed for the independent workshop to provide core alignment functions quickly and easily

INTRODUCING THE **V2280** PROFESSIONAL WHEEL ALIGNER

**JohnBean™**

# V2280 THE ALIGNMENT WORK HORSE

DESIGNED FOR THE INDEPENDENT WORKSHOP TO PROVIDE  
CORE ALIGNMENT FUNCTIONS QUICKLY AND EASILY

## 1 EASY TO USE

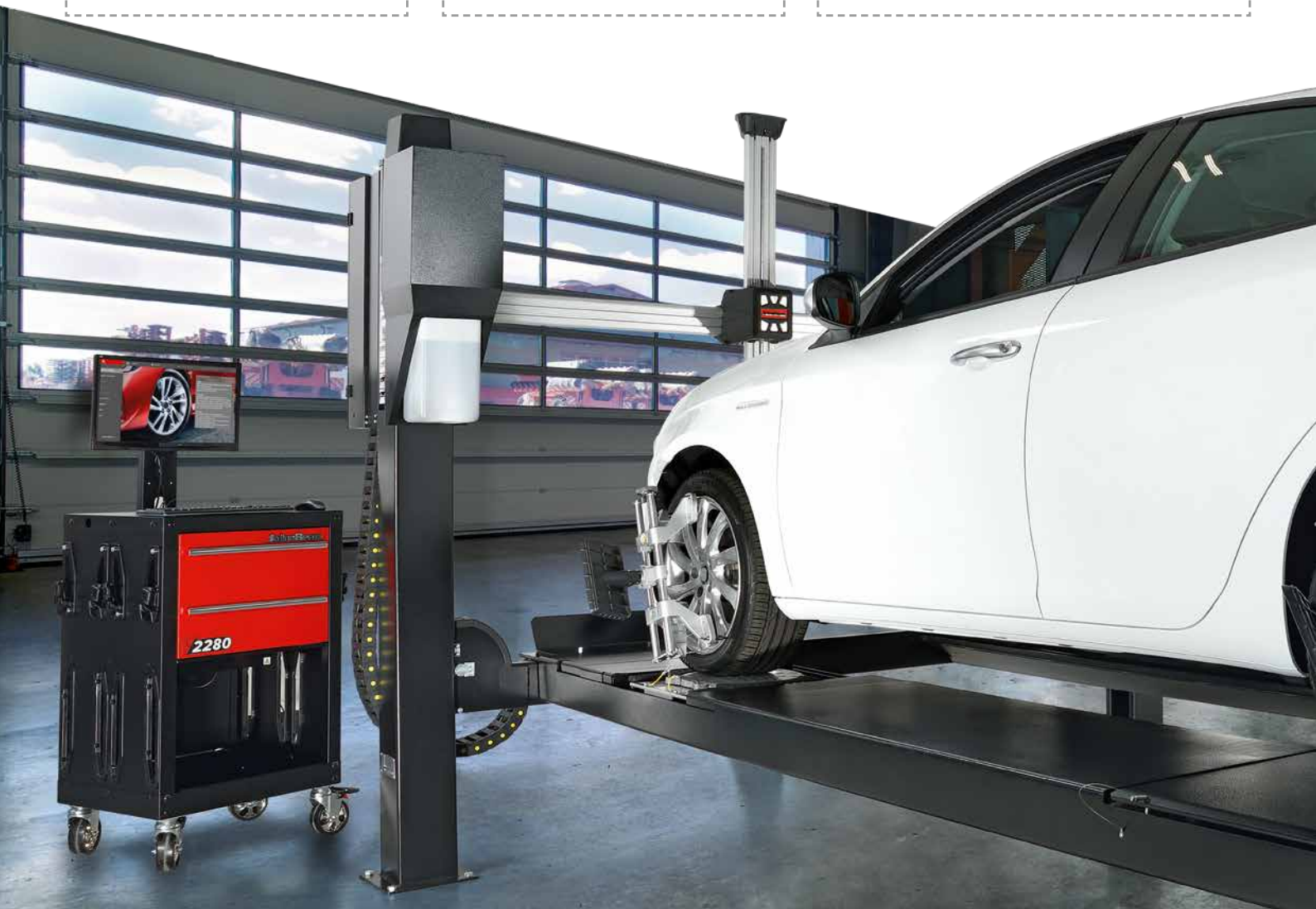
- Software designed together with technicians around the core functions
- Work with confidence using Compensate, warn & alert system

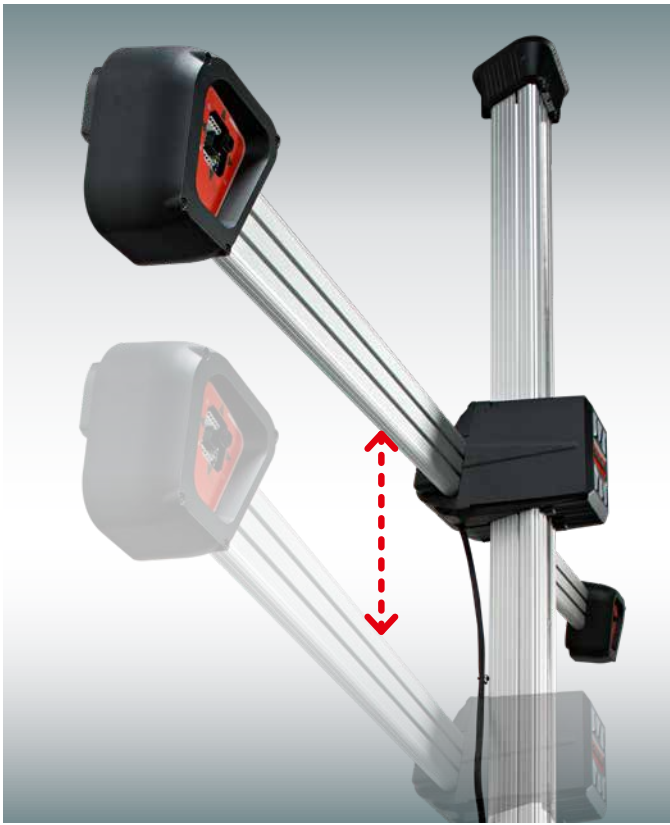
## 2 FAST TO USE

- Video speed camera system
- Intelligent workflows
- Automatic tracking camera beam

## 3 FLEXIBLE INSTALLATION

- Multiple beam configuration
- Cabinet position independent from camera beam
- Use mobility kit to combine cabinet and camera system into one mobile unit





## AUTOMATIC TRACKING CAMERA BEAM

Technician does not have to spend time on adjusting the height of the camera beam.  
The V2280 cameras move automatically up and down following the targets.



## UNINTERRUPTED PROCESS:

YOU NEVER WAIT FOR THE SYSTEM

The **Compensate, warn & alert system** ensures a fast and reliable alignment process. It detects problems with suspension stress and damage, lift, clamps, environment and more:



**Compensate:** small errors are compensated with no notification



**Warn:** medium errors are compensated and user is warned

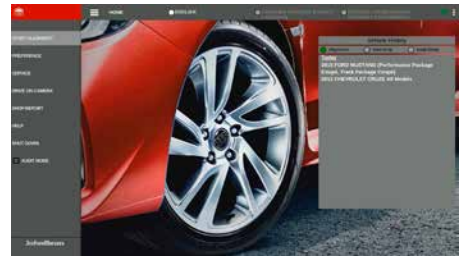


**Alert:** critical errors are detected and corrective actions are displayed

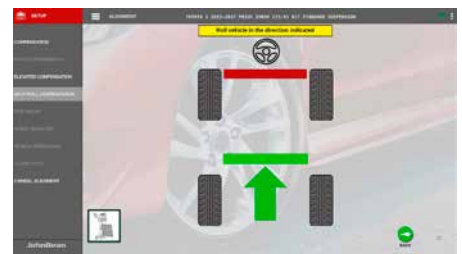
## INTELLIGENT WORKFLOW

Intelligent & predictive alignment workflow for your selected vehicle without unnecessary steps. All the other features are always just one click away.

### 1. SELECT VEHICLE



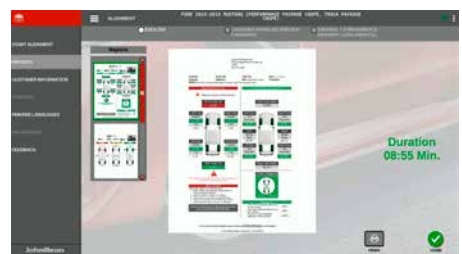
### 2. ROLL THE CAR



### 3. ADJUST



### 4. PRINT REPORT







EZ-TOE for full access while adjusting front toe



Light weight self centering wheel clamps



Video speed camera technology and patented VODI™ system

# V2280 ROBUST AND RELIABLE, MAKES YOUR JOB FASTER AND EASIER

## EASY TO USE

- Software designed together with technicians from the ground up for maximum clarity and accessibility. Useful features always one click away
- Intelligent, predictive alignment flows for the selected vehicle model helps the technician
- Compensate, Warn & Alert let's you perform your work fast with professional results
- Robust proprietary operating system, not based on Windows, for hassle-free operation
- Light weight components for improved ergonomics and less strain on the technician
- The new AC100 wheel clamp is 20% lighter than previous version
- The new clamp fits 11-22" rims without adapters and allows clamping without removing hubcaps
- Two or four wheel alignment capability

## FAST TO USE

- Quick start-up of alignment from the home screen:
  - Improved vehicle selection process with model search
  - Alignment history: quick search for Vehicle Registration number and Customer
- All information about the selected vehicle on one page
- Video Speed Camera technology for a faster and more responsive alignment system
  - Rolling Compensation time reduced 35% compared to previous models
  - Intelligent shorter procedure for caster swing: 40% faster than previous models
- Motorized automatic camera beam saves walking and adjustment time for technician
- Patented VODI™ system - the cameras' lights guide the technician through the alignment
- EZ-TOE - allows adjustment of toe at any steering angle for easy access
- Quickly switch of the language on the home screen and when printing

## FLEXIBLE INSTALLATION

- Camera beam and Cabinet connections of up to 50m apart with a standard ethernet cable
- Independent wall power for cabinet and beam
- Online connectivity automatically downloads specifications and software updates
- Cloud based printing option: retrieve and print your reports from any internet connected PC or mobile device

## CONFIGURATIONS

**V2280** Alignment system with motorized automatic tracking camera beam, mobile cabinet with integrated wheel clamp holders.

**V2260** Alignment systems with manual movable camera beam, mobile cabinet with integrated clamp holders. Optional V2260 configuration: Only camera beam and cabinet without any support

## TECHNICAL DATA

Track width	122 cm - 244 cm
Wheel base	201 cm - 457 cm
Power requirements	230 V 1ph 50-60 Hz

### Technical Data AC100

Rim size	11" - 22" (29,94 - 55,88 cm)
Weight	4,1 kg
Construction	Cast aluminium

### Standard accessories

- AC100 wheel clamps & targets
- Steering wheel holder
- Brake pedal depressor
- Color ink jet printer
- Wheel chocks

### Optional Accessories

- Premium turntables
- Paddle kit
- Mobility kit
- Ride height target kit

### EMEA-JA

Snap-on Equipment s.r.l. · Via Prov. Carpi, 33 · 42015 Correggio (RE)  
Phone: +39 0522 733-411 · Fax: +39 0522 733-479

### France

Snap-on Equipment France · ZA du Vert Galant · 15, rue de la Guivernone BP 97175 · Saint-Ouen-l'Aumône · 95056 Cergy-Pontoise CEDEX  
Phone: +33 134 48 58-78 · Fax: +33 134 48 58-70

### Germany

Snap-on Equipment GmbH · Konrad-Zuse-Straße 1 · 84579 Unterneukirchen  
Phone: +49 8634 622-0 · Fax: +49 8634 5501

### Italy

Snap-on Equipment s.r.l. · Via Prov. Carpi, 33 · 42015 Correggio (RE)  
Phone: +39 0522 733-411 · Fax: +39 0522 733-410

### United Kingdom

Snap-on Equipment Ltd. · Unit 17 Denney Road, King's Lynn · Norfolk PE30 4HG  
Phone: +44 118 929-6811 · Fax: +44 118 966-4369

Part of the machines is illustrated with optional extras which are available at extra cost. Technical modifications reserved.

Cod. 1905 515 · 05/2019

**JohnBean**

[www.johnbean.com](http://www.johnbean.com)