

WHEEL ALIGNER



IMAGING WHEEL ALIGNMENT SYSTEMS

High-resolution imaging technology
delivers speed and accuracy

SERIES **V2400**

JohnBean

V2400

FULLY FEATURED, HIGHLY ACCURATE WHEEL ALIGNMENT SYSTEMS

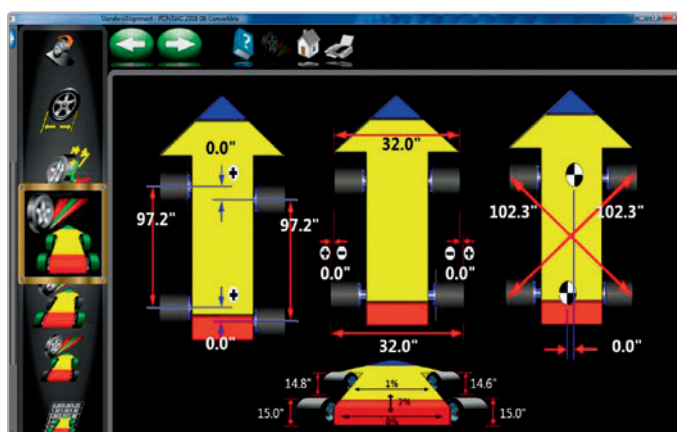
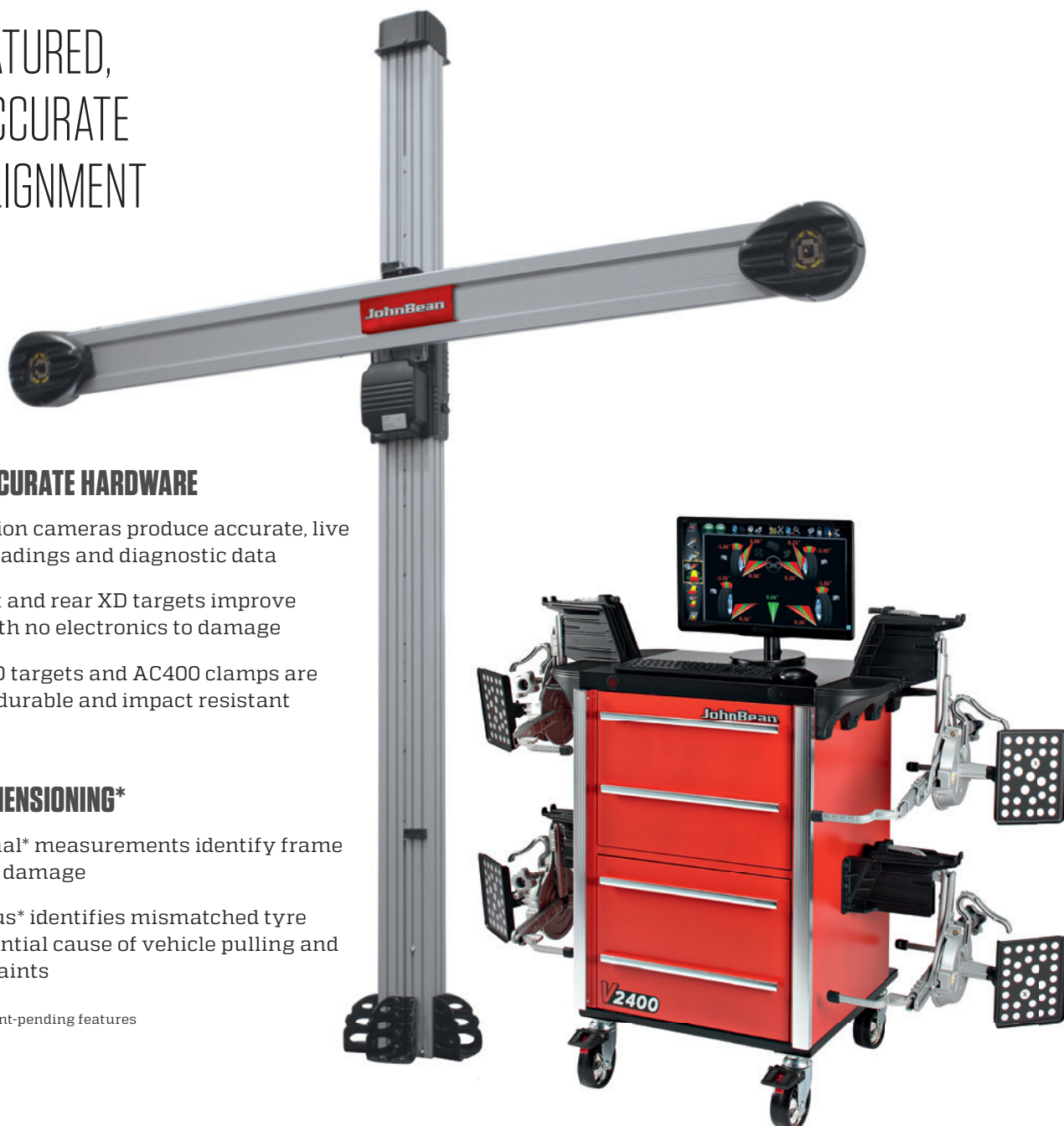
VERSATILE, ACCURATE HARDWARE

- High-resolution cameras produce accurate, live alignment readings and diagnostic data
- Passive front and rear XD targets improve durability with no electronics to damage
- Advanced XD targets and AC400 clamps are lightweight, durable and impact resistant

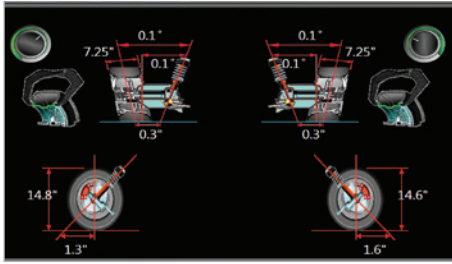
ADVANCED DIMENSIONING*

- Cross-diagonal* measurements identify frame or structural damage
- Rolling Radius* identifies mismatched tyre sizes - a potential cause of vehicle pulling and driver complaints

*Patented and/or patent-pending features

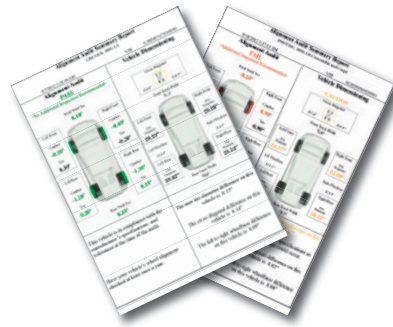


V2400 EXCLUSIVE PLATINUM FEATURES



ADVANCED MEASUREMENTS

- Measurement design for advanced suspension trouble-shooting and modified suspensions. Includes advanced ride height entry, ProAckermann, graphical caster trail, scrub radius and SAI



QUICK ALIGNMENT CHECK

- Quickly identifies if a car needs alignment. Includes audit print-out to assist in the sale of services. Audit print-out allows dimensions and alignment to be shown on one simple print-out, perfect for collaboration with body shops

AC400 CLAMPS WITH XD TARGETS

Weighing in at 3.13 kg (6.9 lbs) and measuring only 152 x 203 mm (6" x 8") in the front and rear, the AC400/XD package is the smallest and lightest we've ever made

RIDE HEIGHT* MEASUREMENT

Measure ride height and obtain proper alignment specs for those vehicles requiring it

EZ-TOE*

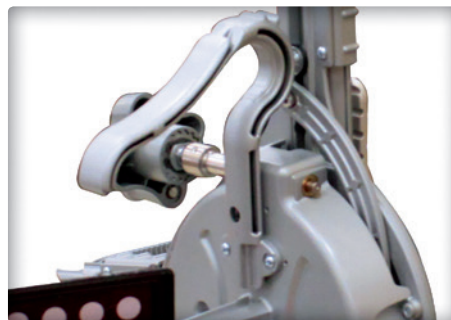
Turn the front wheels and access difficult adjustment points while still displaying centred toe readings

AVAILABLE WITH THE JOHN BEAN AC400 QUICK WHEEL CLAMPS



SECURE CLAMPING WITHOUT TOUCHING THE RIM

- Only the tyre is contacted
- Clutch limited clamping force ensures accurate and repeatable results
- Durable and lightweight magnesium construction
- Alternatively, AC100 universal wheel clamps made of cast aluminum, with no limitation on tyre diameter



AC400: FAST AND EASY TO USE

- Clamping is accomplished with a single fast-action adjustment knob
- No accessories needed to accommodate the full range of tyre sizes
- Large, comfortable handle allows ergonomic use
- XD targets are lighter and take up less space than previous designs

USER-FRIENDLY INTERFACE

Use available step-by-step instructions as a guide for completing even the most complex tasks

MANUFACTURER SPECS

Extensive OEM specs allow quick and accurate vehicle selection

VODI™

Vehicle Orientation Directional Indicator* - guides the technician through the measurement process

HELPVIDEOS

View detailed videos of how to make needed adjustments to complete even the most complex tasks

*Patented and/or patent-pending features

SPECIFICATIONS AND ACCESSORIES

SPECIFICATIONS

Track width	122 cm – 244 cm
Wheel Base	201 cm – 457 cm
Shipping weight	202 kg
Power requirements	230 V 1ph 50-60 Hz

Specifications AC400

Tyre diameter	19" – 39" (48.3 cm – 99.1 cm)
Weight	3.3 kg
Clamping force	164.6 N
Construction	Cast magnesium

Specifications AC100

Rim clamping range	11" – 22"
Weight	4.9 to 5.2 kg
Construction	Cast aluminium

Standard accessories

Wheel clamps & targets
Steering wheel holder
Brake pedal depressor
Two wheel chocks
Printer

* Standard with V2400 AC100

** Standard with V2400 AC400

OPTIONAL ACCESSORIES

AC100 universal wheel clamp kit*:
EAK0320J36A

AC400 wheel clamp accessory kit**:
EAK0320J35A

Mobility kit:
EAK0320J78A

Drive-on camera aid:
EAK0289J91A

AC400 hub adaptor kit for wheels-off
alignment:
EAK0222J83B

AC200 universal wheel clamp
extension kit:
EAK0268J62A

AC100 universal wheel clamp
extension kit:
30926

AC400 dual wheel adaptor kit:
EAK0305J50A

Dual tall support kit:
EAK0289J80A

Centre tall support kit:
4031236

Dual short support kit:
EAK0289J81A

Centre short support kit:
4031234

Tilt camera beam:
4031154

EMEA-JA

Snap-on Equipment s.r.l. · Via Prov. Carpi, 33 · 42015 Correggio (RE)
Phone: +39 0522 733-411 · Fax: +39 0522 733-479

France

Snap-on Equipment France · ZA du Vert Galant · 15, rue de la Guivernone BP
97175 · Saint-Ouen-l'Aumône · 95056 Cergy-Pontoise CEDEX
Phone: +33 134 48 58-78 · Fax: +33 134 48 58-70

Germany

Snap-on Equipment GmbH · Konrad-Zuse-Straße 1 · 84579 Unterneukirchen
Phone: +49 8634 622-0 · Fax: +49 8634 5501

Italy

Snap-on Equipment s.r.l. · Via Prov. Carpi, 33 · 42015 Correggio (RE)
Phone: +39 0522 733-411 · Fax: +39 0522 733-410

United Kingdom

Snap-on Equipment Ltd. · Unit 17 Denney Road, King's Lynn · Norfolk PE30 4HG
Phone: +44 118 929-6811 · Fax: +44 118 966-4369

Part of the machines is illustrated with optional extras which are available
at extra cost. Technical and visual modifications reserved.

Cod. 9702 777 · 06/2019

JohnBean
www.johnbean.com