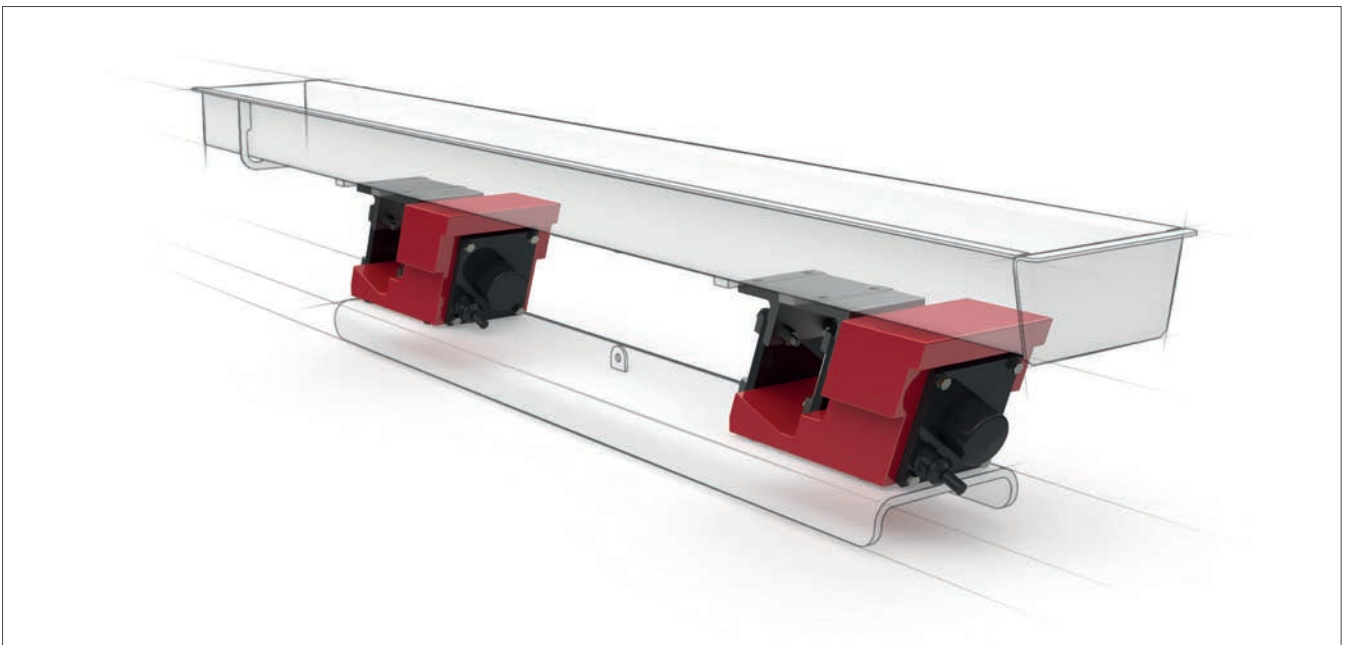


Dosing Drives

Series JD

The electromagnetic drives generate linear motions and are operated via thyristor controllers.



Dosing, packaging, feeding

JD dosing drives are ideal for dosing, mixing and feeding applications in the packaging, weighing and automation industries, at low to medium throughput rates.

Continuously adjustable speed

The motion amplitude can be continuously adjusted during operation via the controller. The conveying speed can thus be adjusted from standstill up to the maximum performance via potentiometer or target value.

Stable operation

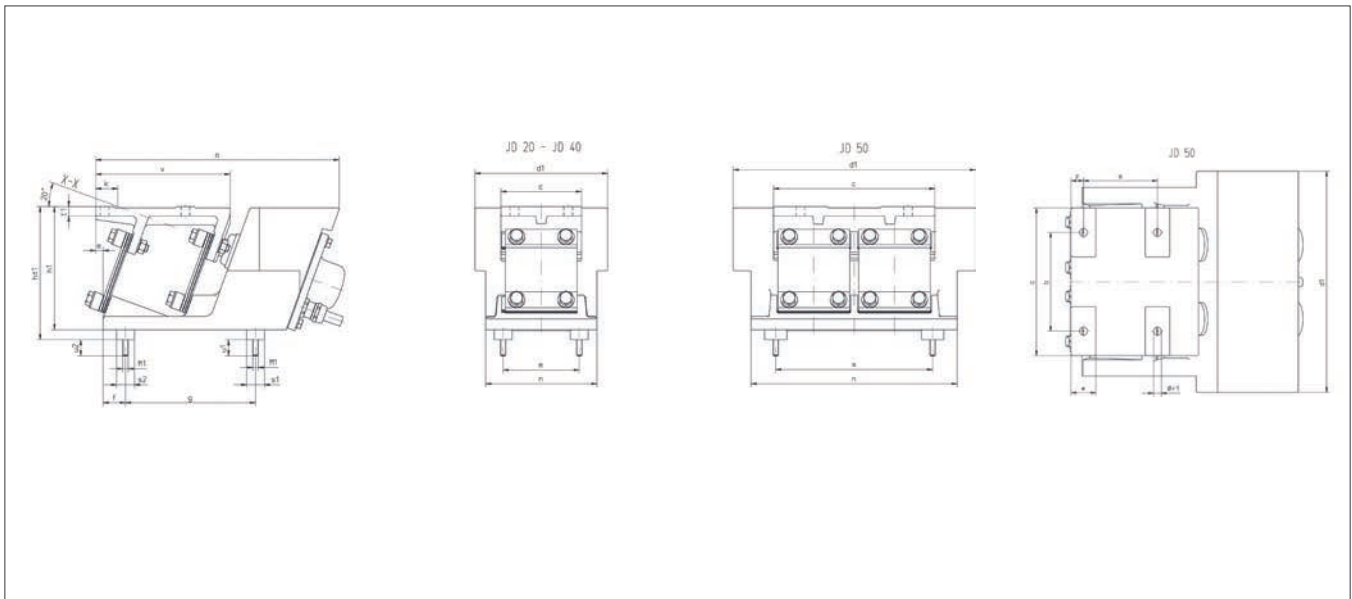
In order to obtain the optimum vibration parameters, even under varying influences of the conveyed material, every drive unit is tuned in our workshop to the effective weight required by your application.

Ready for immediate operation

The drives are also ideal for clock cycle operation because the drive reaches maximum motion amplitude as soon as it is started and it comes to a stop immediately after being switched off.

Dosing Drives

Series JD



Connection

Please note that dosing drives are operated via a Thyristor controller. Details on our controllers in the TK series are given on page 24. Please use only the specified moving-iron instruments for measuring the current.

Centre of gravity

The centre of gravity of the trough top fixture must be situated on the X-X line for all types. The dimension „K“ states the intersection with the bearing surface.

Mains voltages	115/230 V, 50/60 Hz
optional	42 - 230 V, 50/60 Hz
Switch-on time	Operating mode S1, 100%
Protection system	IP 65 as per EN 60 529
Paintwork	Hammer tone finish pure silver 91
optional	SSC 1000, USDA approved
Thyristor controller	TK 5

TYPE CODE

JD

20

-

6



Type



Size



Vibrating Frequency

	Size	Vibrating Frequency	Usable Weight						Rated Current 230V	Output	Weight	Vibrating Frequency	Usable Weight						Rated Current 230V
			kg		mm		A	W					kg	Hz	kg		mm		
		Hz									Hz								
JD	20	- 50	0,3	-	2,0	2,15	-	1,50	0,2	10	3,9	- 60	0,3	-	1,9	1,75	-	1,25	0,2
JD	30		1,5	-	4,5	2,00	-	1,45	0,4	18	7,3		1,5	-	4,2	1,55	-	1,15	0,3
JD	40		2,5	-	8,3	2,00	-	1,45	0,7	35	13,4		2,5	-	8,5	1,60	-	1,15	0,7
JD	50		6,0	-	15,4	1,90	-	1,45	1,4	70	25,5		6,0	-	16,3	1,50	-	1,10	1,5
JD	20G	- 50	2,1	-	2,8	1,50	-	1,20	0,2	10	6,8	- 60	2,0	-	2,8	1,20	-	1,0	0,2
JD	30G		4,6	-	6,0	1,45	-	1,20	0,4	18	12,0		4,3	-	6,0	1,15	-	0,9	0,3
JD	40G		8,4	-	10,5	1,45	-	1,20	0,7	35	20,1		8,6	-	10,5	1,15	-	1,0	0,7
JD	50G		15,5	-	22,0	1,45	-	1,15	1,4	70	37,7		16,4	-	22,0	1,10	-	0,95	1,5

Type	a	b	c	d1	d2	e	f	g	g'	h1	h	h'	k	l	m
JD 2...	55	35	50	90	70	9	15	100	220	97	104	129	0	250	50
JD 3...	80	50	70	120	80	8,5	20	120	240	115	126	150	35	300	65
JD 4...	90	60	90	148	100	9	25	145	285	137	147	172	105	350	85
JD 5...	90	120	180	270	270	14	25	145	300	137	147	172	105	350	175

Type	m1	m2	n	n'	o	p	r1	s1	s2	t1	u1	u2	v	w	z
JD 2...	M4	M4	75	75	188	63	7	15	10	7,5	10	10	100	20	10
JD 3...	M6	M4	100	100	222	78	7	20	15	8,5	18	10	125	20	10
JD 4...	M6	M6	124	120	272	78	9,6	20	20	10,5	18	18	150	20	10
JD 5...	M6	M6	230	220	277	73	9,6	25	25	10,5	18	18	155	30	15

Maintenance-free

JVM dosing drives generate only little noise, are maintenance-free and are designed for continuous operation. The tried-and-tested engineering and the compact, minimised dead point construction in protection system IP65 ensures operational reliability and easy cleaning.

Adapted model series

JD drive units are available in four sizes, and also in „G“ executions for higher effective weights. We would be happy to advise you on special models, such as for higher oscillation amplitudes.

Mounting

Standard drive mounts are rubber buffers with threaded connection bolts as standard. Other options are available upon request.

Explosion protected models

Dosing drives in explosion protected, ATEX execution (JDA/JDE) may only be operated in conjunction with our protective unit „N“.

Tip

Using several drive units on one machine allows for longer conveying routes, and /or higher design weights.

