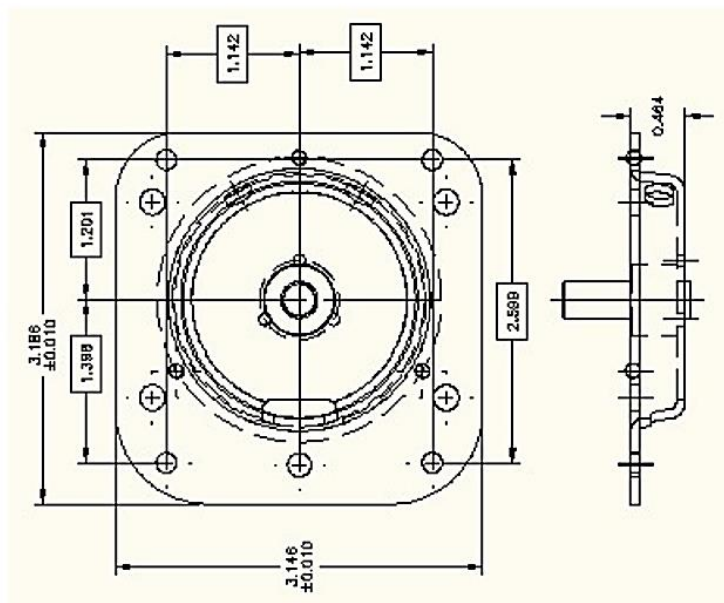


CUSTOM SOLENOIDS & ACTUATORS

Kendrion Mishawaka

Encapsulated Clutch Solenoid

In off-road vehicles and construction equipment, the machinery has to endure rough environment. Cranes, tractors and bulldozers must rely on their components working properly to effectively do the assigned job or task. Kendrion designed an Encapsulated Clutch Solenoid to give operators of these large vehicles feedback on force resistance. We used a pull type solenoid (rotating clutch) with a stroke of 0.150" and voltage of 12 VDC. The key was using a clutch plate that would rotate with steel ball bearings. The result was a solenoid with a response time of 20 milliseconds and satisfaction to our customers operating 20-plus ton vehicles.



Technical Specification

Solenoid Type	Pull type (rotating clutch)
Stroke	0.150"
Voltage	12V DC
Response Time	20 ms
Materials and Finish	HTN / Cold rolled steel
Package Size (H/D/W)	1.0"/3.4"/3.4"
Applications / Comments	Off road vehicles / construction equipment

2015-08-05