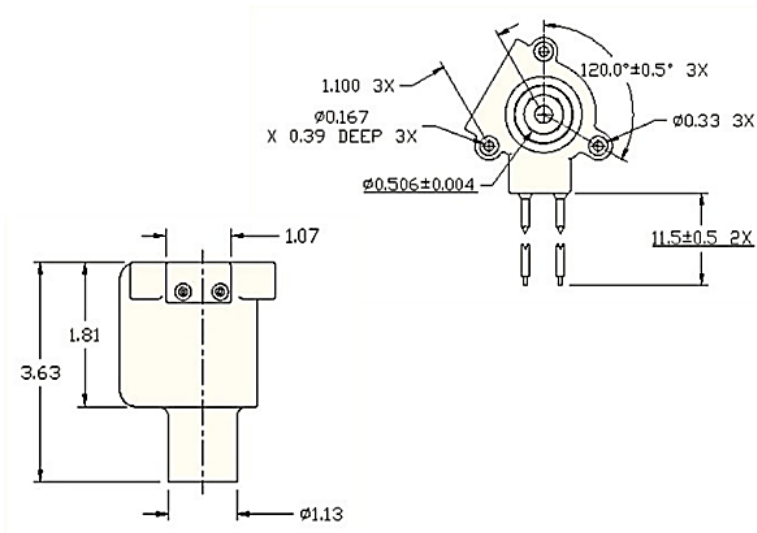


## CUSTOM SOLENOIDS & ACTUATORS

Kendrion Mishawaka

### Ether Injection Solenoid

Out on the farm, there are various large-scale pieces of equipment to help tend to the land and harvest the crop. Kendrion was able to create and produce an Ether Injection Solenoid for cold start diesel engines to help in all different temperatures and environments. Our engineers were able to reduce the amount of parts compared to the initial design by 75%. Any time a new layout can reduce the structure, it lowers costs and saves money. Kendrion redesigned the valve so an external power supply was no longer needed. To ease assembly mounting features were built into the bracket. The solenoid valve type is a 3-way valve works under a pressure of 60 psi. The smaller design not only reduced cost, but was an improvement compared to the existing design by helping cold start diesel engines maintain peak performance.



#### Technical Specification

<b>Solenoid Valve Type</b>	3-Way valve
<b>Media</b>	Ether
<b>Pressure</b>	60 psi
<b>Orifice</b>	Controlled ruby orifice
<b>Voltage</b>	12/24 V DC
<b>Materials and Finish</b>	6/12 Nylon / brass
<b>Package Size (H/D/W)</b>	2.7"/1.8"/1.9"
<b>Applications / Comments</b>	Cold start diesel engines

2015-08-05