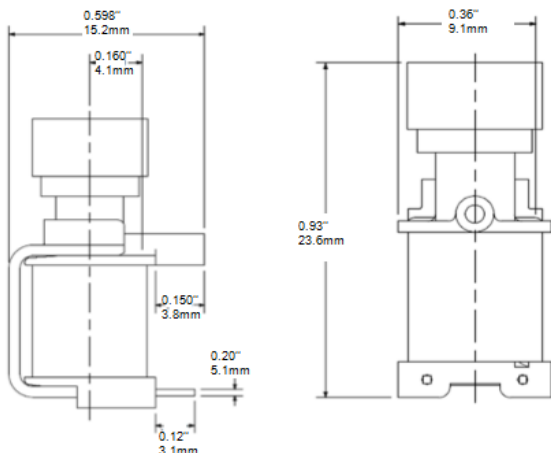
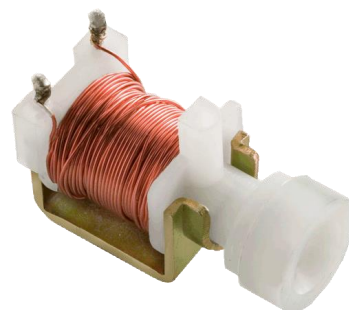


## CUSTOM SOLENOIDS & ACTUATORS

Kendrion Mishawaka

### Miniature 2-Way Valve

The Miniature Two-Way Valve (MTV) was designed to be mounted directly onto a printed circuit board (PCB). The MTV can be designed with multiple porting configurations (barb, ports, push-to-connect cartridge inserts, etc...). The configuration shown was designed to mate directly onto an aerosol can. Roughly the size of a thumb tack, the MTV is one of the smallest valves in the Kendrion line up. It was designed to be used in conjunction with a Pulse Width Modulated (PWM) electrical circuit to keep the power draw to a minimum. It is capable of 120,000 cycles using 2 AA batteries.



#### Technical Specification

<b>Solenoid Valve Type</b>	2-Way Normally Closes up to 200 psi (13.8 bar)
<b>Pressure</b>	Operating: 80 – 100 psi (5.5 – 6.9 bar) – typical
<b>Flow</b>	See Chart
<b>Leakage</b>	$<1 \times 10^{-5}$ cc/sec
<b>Voltage</b>	Pull-In: 1.5 V (min)
<b>Coil Resistance</b>	Digital Pulse Driven Circuit Per Customer Specification
<b>Response Time</b>	3 ms
<b>Materials and Finish</b>	Glass filled Nylon Seals per fluid requirements Zinc Plated Steel
<b>Cycle Life</b>	Valve Alone – Over 1 Million cycles 2 AA Batteries – 120,000 cycles - typical

2015-08-05

