

NF 60

DIAPHRAGM LIQUID PUMP



NF 60 KPDCB-4B



NF 60 KP .51DC

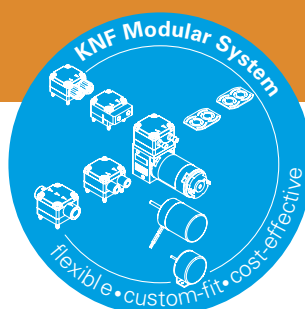
ADVANTAGES

- Self priming and excellent for pressure
- Extreme chemical resistance
- Dry running, durable and maintenance free

POSSIBLE AREAS OF USE

- Analysers
- Laboratory
- Cleaning industry
- Printing

Please visit our website
www.knf.com
 to get more information.



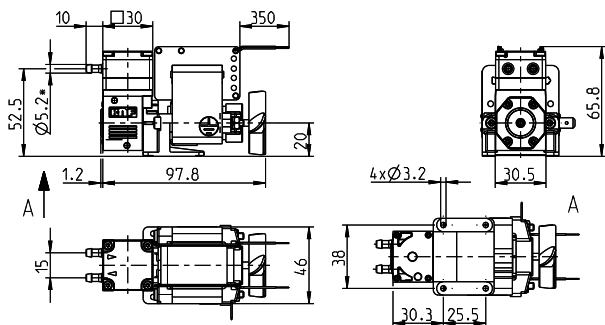
PERFORMANCE DATA						
Series model	NF 60 E		NF 60 DC		NF 60 DCB-B	NF 60 DCB-4B
Material options	KP/KP .51*	KT	TT	FT		
Pump head	PP	PP	PVDF	PTFE		
Diaphragm	PTFE	PTFE	PTFE	PTFE		
Valves	EPDM	FFKM	FFKM	FFKM		
Resonating diaphragm	PTFE	PTFE	PTFE	PTFE		
Flow rate at atm. pressure (l/min)	0.6					
Suction height (mWg)	3					
Pressure head (mWg)	10					
Permissible ambient temperature (°C)	+5 to +40					
Permissible liquid temperature (°C)	+5 to +80					
ELECTRICAL DATA						
Operating voltage (V)	230 V/50 Hz		12/24		12/24	10-26.4
Power consumption (W)	26		8.3/8.6		7.7/7.9	9
I load max. (A)	0.21		0.69/0.36		0.64/0.33	0.74-0.32
IP protection factor	00		00		30	
Weight (g)	580		190		220	

NF 60 E

PERFORMANCE DATA

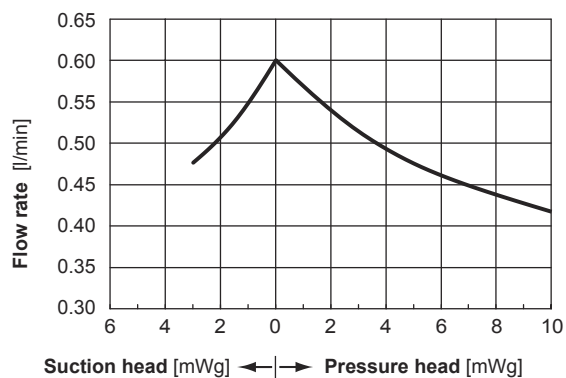
Series model	Flow rate at atm. pressure (l/min)	Max. suction height (mWg)	Max. pressure head (mWg)
NF 60 E	0.6	3	10

NF 60 E



Dimensions in mm

NF 60 E FLOW CURVE

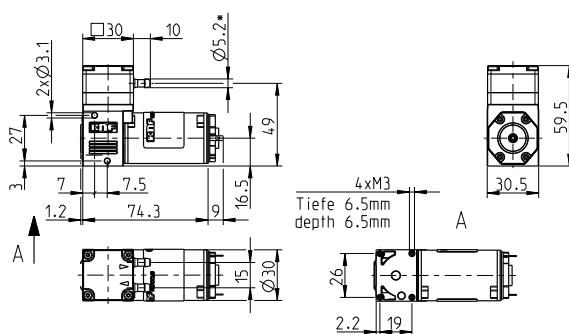


NF 60 DC

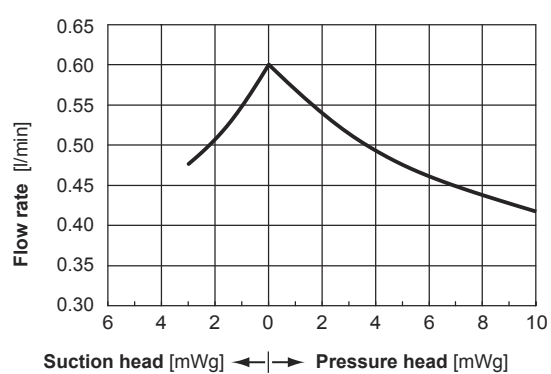
PERFORMANCE DATA

Series model	Flow rate at atm. pressure (l/min)	Max. suction height (mWg)	Max. pressure head (mWg)
NF 60 DC	0.6	3	10

NF 60 DC



NF 60 DC FLOW CURVE

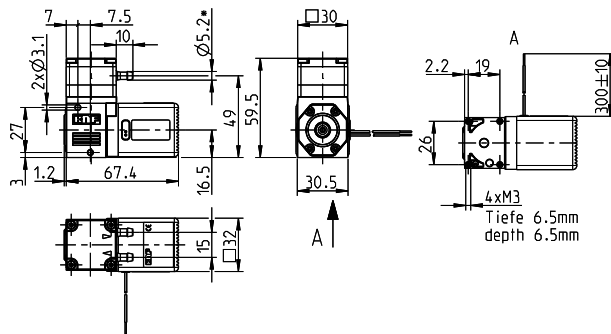


NF 60 DCB-B

PERFORMANCE DATA

Series model	Flow rate at atm. pressure (l/min)	Max. suction height (mWg)	Max. pressure head (mWg)
NF 60 DCB-B	0.6	3	10

NF 60 DCB-B



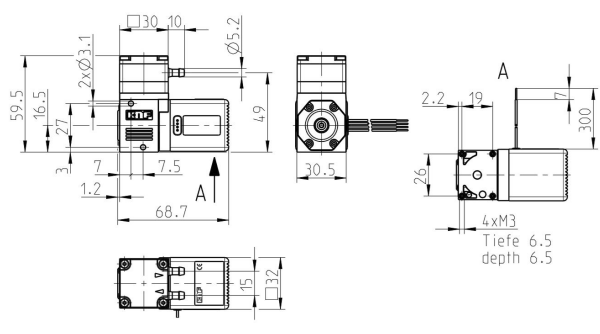
Dimensions in mm

NF 60 DCB-4B

PERFORMANCE DATA

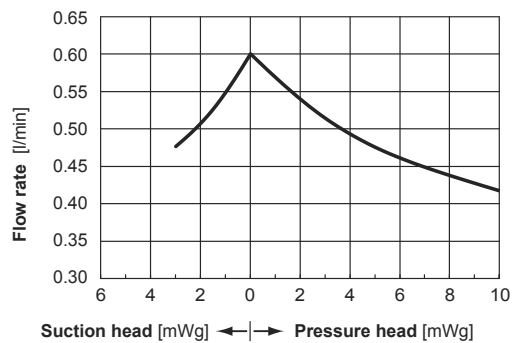
Series model	Flow rate at atm. pressure (l/min)	Max. suction height (mWg)	Max. pressure head (mWg)
NF 60 DCB-4B	0.6	3	10

NF 60 DCB-4B

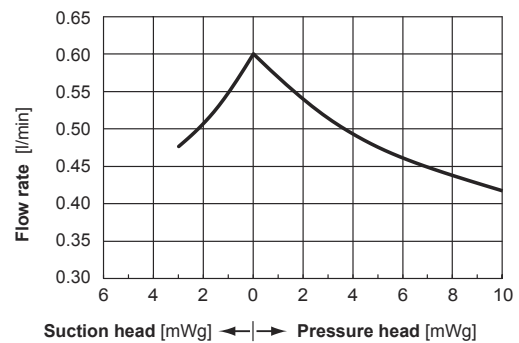


Dimensions in mm

NF 60 DCB-B FLOW CURVE



NF 60 DCB-4B FLOW CURVE



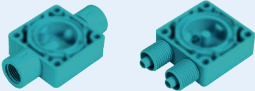


ELECTRIC SPECIFICATIONS

Wires	AWG 24
Wires assignment	red = +VS black = - VS/GND

ELECTRIC SPECIFICATIONS

Wires	AWG 24
Wires assignment	red = +VS black = - VS/GND white = Vctrl-input green = FG-output
Input signal	0-5 V

OPTIONS		
Description	Illustration	Details
Motors with special voltages or frequencies		Various voltage options, higher and lower service life
Electrical connectors		Specific customers requirements such as special connections (Molex, AMP, etc.)
Different hydraulic connection types		Internal thread, compression fittings, manifold connection etc.







NSF National Sanitary Foundation

This certification will confirm that all of the pumps with the code .51 are certified for the use with foods/consumables.



DIGITAL CUSTOMIZATION

Thanks to digital technology, this pump can be quickly adapted to the customer's system. This is done by parametrizing the firmware of the motor at KNF.

ACCESSORIES		
Description	Illustration	Details
Fastening elements		Enabling additional mounting options
Diaphragm pressure control valve		The pressure control valve can be used for a more accurate control of flow against a fluctuating back pressure, metering into a vacuum and from a pressurised system.
Pulsation damper		This very versatile pulsation damper reduces the vibration in hoses and pipes and it helps to remove pulsation which is preventing the system from functioning correctly.
Filter		KNF filters protect both pumps and other upstream instrumentation and hydraulic circuits against particulate, crystals and fibres which can improve optimum operation.

The performance values for the series models shown on this data sheet were determined under test conditions. The actual performance values may differ and depend in particular on the usage conditions and therefore on the specific application, on the parameters of the components involved in the user's system and on any technical modifications carried out which deviate from the standard configuration or the as delivered condition.

If individual designs have been created for specific customers on the basis of series models, other technical performance data may apply. Before operation begins, the relevant operating instructions and/or assembly or installation instructions should be read and the safety information contained in these instructions should be noted. KNF reserves the right to make changes to the product and the associated documentation without prior notice to the customer.



www.knf.com