

NPK 018 SERIES

SWING PISTON VACUUM PUMPS AND COMPRESSORS



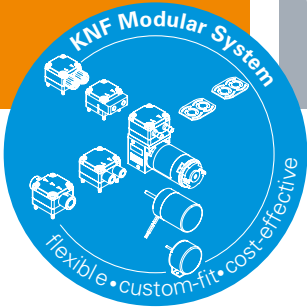
NPK 018 DC

ADVANTAGES

- High level of performance in a compact size
- High pressure up to 1.5 bar rel./21.8 psig
- Robust design

POSSIBLE AREAS OF USE

- Diagnostics – transfer of liquids and gaseous samples for analysis
- Medical technology – e.g. inhalation devices
- Vacuum technology – pick & place applications



Please visit our website
www.knf.com
to get more information

PERFORMANCE DATA		
Series model	NPK 018 Vacuum DC	NPK 018 Pressure DC
Flow rate at atm. pressure (l/min)	18.0	
Ultimate vacuum (mbar abs.)	120	-
Max. operating pressure (bar rel./psig)	-	1.5/21.8
Permissible ambient temperature (°C)	+5 ... +40	
Permissible media temperature (°C)	+5 ... +40	
Weight (kg/lbs)	1.9/4.2	
ELECTRICAL DATA		
Voltage (V)	12 24	
Motor	DC motor	
Protection class motor	IP 50	
I _{max} (A)	4.2 2.2	6.0 3.0

ACCESSORIES

Description	Part No.
Silencer/Inlet filter	058987

The performance values for the series models shown on this data sheet were determined under test conditions. The actual performance values may differ and depend in particular on the usage conditions and therefore on the specific application, on the parameters of the components involved in the user's system and on any technical modifications carried out which deviate from the standard configuration or the as delivered condition.

If individual designs have been created for specific customers on the basis of series models, other technical performance data may apply.

Before operation begins, the relevant operating instructions and/or assembly or installation instructions should be read and the safety information contained in these instructions should be noted.

KNF reserves the right to make changes to the product and the associated documentation without prior notice to the customer.



www.knf.com

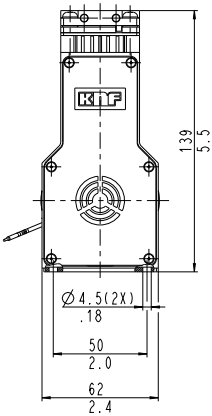
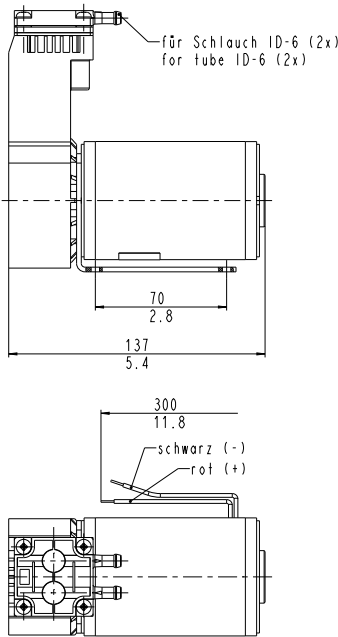
NPK 018 DC

PERFORMANCE DATA

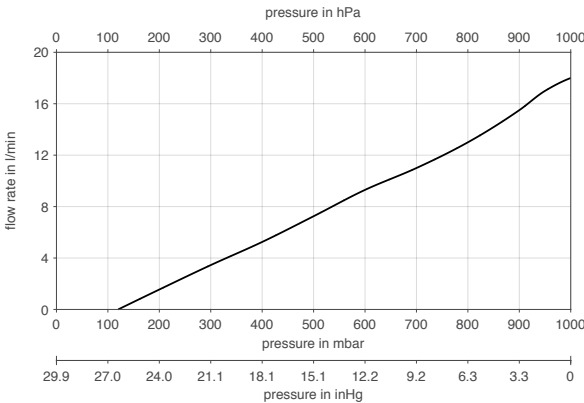
Series model	Flow rate at atm. pressure (l/min) ¹⁾	Max. operating pressure (bar rel./psig)	Ultimate vacuum (mbar abs.)
NPK 018 Vacuum DC	18.0	-	120
NPK 018 Pressure DC	18.0	1.5/21.8	-

¹⁾ Liter at STP

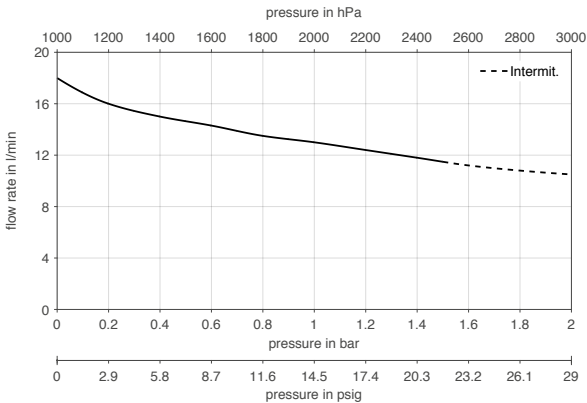
NPK 018 DC



NPK 018 VACUUM DC



NPK 018 PRESSURE DC



NPK 018 VACUUM DC | PUMP DOWN TIME FOR 20 LITER VESSEL

