

# Diagnostic connection set

## Accessory kit for diagnostic measurements



- **Permits a PD-free connection to the cable**
- **Contains a variety of adapters that cover most commonly used outlets**
- **Simplifies the calibration procedure through additional cable lugs**
- **Comes in a convenient, sturdy case**

---

### DESCRIPTION

The diagnostic connection set can be used for diagnostic measurements such as offline PD and tanDelta assessments. This set enables the user to make a PD free/low connection to the test object, reducing to zero any effect that the connection might have on the object. The set simplifies the evaluation of the PD measurements and prevents faulty readings of tanDelta measurements caused by corona.

All the adapters enable the calibration equipment to be connected directly to the adapter used. Moreover the kit can also be used for other applications/ equipment like connecting VLF systems or the tanDelta attachment.

#### All advantages at a glance

- PDs minimised at the connection point
- Proper connection in various conditions
- Enables simplified calibration procedure
- Rugged transport case

#### The diagnostic connection set comprises of the following adapters:

##### 1. Cable lug adapter:

The cable lug adapter provides the optimum connection between the measurement cable and a disconnected cable. This adapter is extremely small and creates a very stable connection to the measurement cable. We recommend using the large field control ring for applications greater than 28 kV.

##### 2. SF6 adapter:

The SF6 adapter allows the measurement cable to be connected to an SF6 right-angle boot/elbow. The adapter is supplied in two different sizes (M12 and M16 thread) so that measurements can be taken at various right-angle boots / elbows.

##### 3. Busbar adapter:

The busbar adapter enables the measurement cable to be connected to the busbar directly. This is useful for PD measurements on switchgears or for cables connected in a transverse position. We recommend using the large field control ring for applications greater than 28 kV.

##### 4. Clamp:

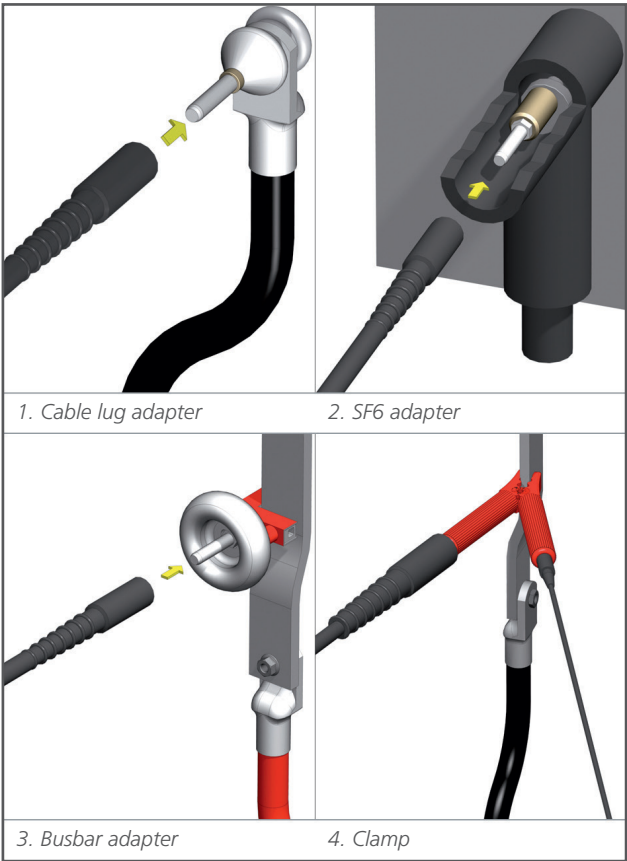
The clamp is suitable for most applications. Above all, it is simple to use.

TECHNICAL DATA\*

Scope of application	up to max. 60 kV
Dimensions (W x H x D)	339 x 152 x 295 mm
Weight	4.2 kg

SCOPE OF DELIVERY

- Cable lug adapter with 2 different field control rings
- 2 SF6 adapters in M12 and M16 thread
- Busbar adapter with 2 different field control rings
- Clamp with extra connection for calibrator
- Calibration extension for SF6 right-angle boots
- Tool for fitting SF6 adapters
- Cleaning cloths



ORDERING INFORMATION	
Product	Order no.
Diagnostic connection set	890017909
additional cleaning cloths	890010923

\* We reserve the right to make technical changes.

GERMANY  
Megger GmbH  
Obere Zeil 2  
D-61440 Oberursel  
T +49 6171 92987 0  
F +49 6171 92987 19  
info@megger.de

Seba Dynatronic  
Mess- und Ortungstechnik GmbH  
Dr.-Herbert-lann-Str. 6  
96148 Baunach  
T +49 (0) 9544 680  
F +49 (0) 9544 2273  
team.dach@megger.de

Hagenuk KMT  
Kabelmesstechnik GmbH  
Röderaue 41  
01471 Radeburg  
T +49 (0) 35208 840  
F +49 (0) 35208 84249  
team.dach@megger.de

CERTIFICATION ISO  
Registered to ISO 9001 Cert. no. 000677 QM08  
**DIAGNOSTIC-CONNECTION-SET\_DS\_**  
**EN\_V01**  
**www.megger.de**  
Megger is a registered trademark