

## Product Information TFP-90, -96, -98

## PHARMA

# Pharma-Temperature Sensor with Fermenter Connection

### Application/Specified usage

- Temperature measurement in plants of pharmaceutical industry
- Temperature measurement in fermenter connection

## Application examples

- Process monitoring
- Monitoring of CIP-/SIP-process
- Temperature monitoring

### Hygienic design/Process connection

- Fermenter process connection, standard length 46 mm/52 mm
- Easy sterilizable measuring point
- CIP-/SIP-cleaning up to 150 °C
- Product contacting materials compliant to FDA
- Sensor completely made of stainless steel

### Features/Advantages

- Temperature sensor electro polished  $R_a \leq 0.8 \mu\text{m}$  (standard)
- Fermenter connection made of stainless steel 316L (1.4435)
- Integrated transmitter (optional)
- Inspection certificate 3.1 in scope of delivery
- Protection class IP 69 K (with electrical connection M12 plug)

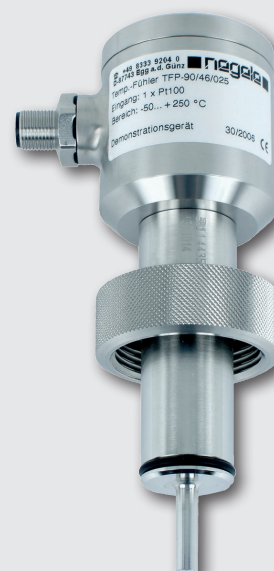
### Options/Accessories

- 2 x Pt100 (not retrofittable)
- Programmable transmitter MPU-4 and MPU-M with output 4...20 mA, 2-wire
- Integrated transmitter for HART-protocol
- Programming adapter MPU-P 9701
- Integrated transmitter MPU-LCD with display in connecting head
- Pt100 chip with other classes of accuracy (1/3B, 1/10B)
- Sensor tips with diameter 3 mm and 4 mm
- Pre-assembled connecting cable for M12 plug
- Fixed cable in other lengths and other material available
- Calibration certificate, DKD-laboratory certificate
- Surfaces with  $R_a \leq 0.4 \mu\text{m}$  resp.  $0.6 \mu\text{m}$  available optional

## Authorizations



### Temperature sensor TFP-90



### Temperature sensor TFP-98



| Temperature sensor    |   |  |
|-----------------------|---|--|
| Process connection    | Fermenter sleeve  | DN25 with coupling nut, G1¼"   |
| Insertion length      | standard  | 25 mm  |
| Connection length     | standard  | 46 mm and 52 mm  |
| Materials             | connecting head and coupling nut<br>fermenter connection<br>sealing ring            | stainless steel 1.4301 (AISI 304)<br>stainless steel 1.4435 (AISI 316L), electro polished, $R_a \leq 0.8 \mu\text{m}$ , $R_a \leq 0.6 \mu\text{m}$ and $R_a \leq 0.4 \mu\text{m}$ optional<br>EPDM |
| Operating pressure    |   | 10 bar maximum   |
| Temperature ranges    | ambient<br>sensor tip   | -50...+85 °C<br>-50...+250 °C  |
| Sensing resistor      | acc. to DIN EN 60751  | Pt100  |
| Electrical connection | cable gland<br>cable connection<br>fixed cable 2.5 m<br>fixed cable 2.5 m (> 90 °C) | M16 x 1,5<br>M12 plug 1.4301 (AISI 304), 4-pins<br>LIYY 4 x 0.25 mm <sup>2</sup><br>PTFE 4 x 0.14 mm <sup>2</sup>  |
| Protection class      |   | IP 69 K (with electrical connection M12 plug)  |

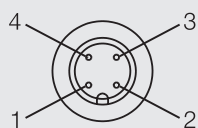
| Transmitter MPU-4, MPU-H, MPU-M |                                 |  |
|---------------------------------|---------------------------------|--|
| Temperature ranges              | ambient<br>storage              | -40...+85 °C<br>-55...+90 °C   |
| Measuring ranges                | MPU-4, MPU-H, MPU-M             | standard: -10...40 °C, 0...50 / 100 / 150 / 200 °C<br>special ranges free programmable     |
| Accuracy                        | input                           | < $\pm 0.25$ °C  |
| Temperature drift               | zero, span                      | < 0.01 % / K   |
| Supply                          | MPU-4, MPU-H, MPU-M<br>accuracy | 8...35 V DC<br>0.01 % / V (reference: 12 V DC)   |
| Output                          | signal<br>accuracy<br>burden    | analog 4...20 mA<br>< $\pm 0.1$ % of measurement range<br>< 600 $\Omega$ (at $U_B = 24$ V) |
| Humidity                        | without condensation            | 0...98 %   |

#### Accuracy classes of temperature sensors | Tolerances for Pt100 acc. to DIN EN 60751

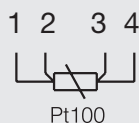
| Pt100                   | A                                  | 1/3 B                              | 1/10 B                             |
|-------------------------|------------------------------------|------------------------------------|------------------------------------|
| 0 °C / 100 $\Omega$     | $\pm 0.15$ K / $\pm 0.06$ $\Omega$ | $\pm 0.10$ K / $\pm 0.04$ $\Omega$ | $\pm 0.03$ K / $\pm 0.01$ $\Omega$ |
| 100 °C / 138.5 $\Omega$ | $\pm 0.35$ K / $\pm 0.13$ $\Omega$ | $\pm 0.27$ K / $\pm 0.10$ $\Omega$ | $\pm 0.08$ K / $\pm 0.03$ $\Omega$ |

## Electrical connection without transmitter

## With 1 x M12 plug

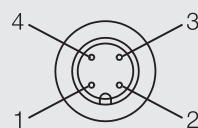


## Configuration 1st M12 plug



## Electrical connection with transmitter

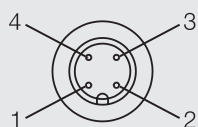
## With M12 plug



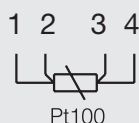
## Configuration M12 plug

- 1: + supply
- 2: - supply 4...20 mA
- 3: not connected
- 4: not connected

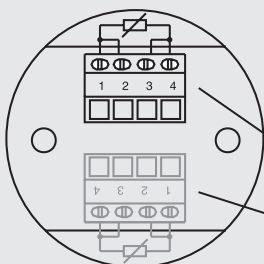
## With 2 x M12 plug



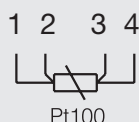
## Configuration 2nd M12 plug



## With cable gland



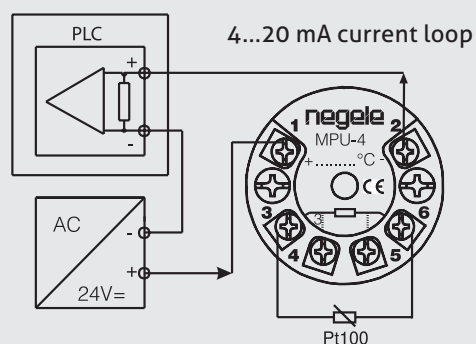
## Configuration strip terminal



clamps for 1st Pt100

clamps for 2nd Pt100  
(at version 2 x Pt100)

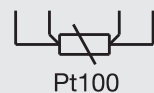
## With cable gland



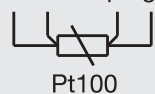
## With fixed cable

Fixed cable connection  
with 1 x Pt100

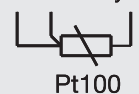
wh ye bn gn standard  
rd rd wh wh PTFE

Fixed cable connection  
with 2 x Pt100 (LIYY)

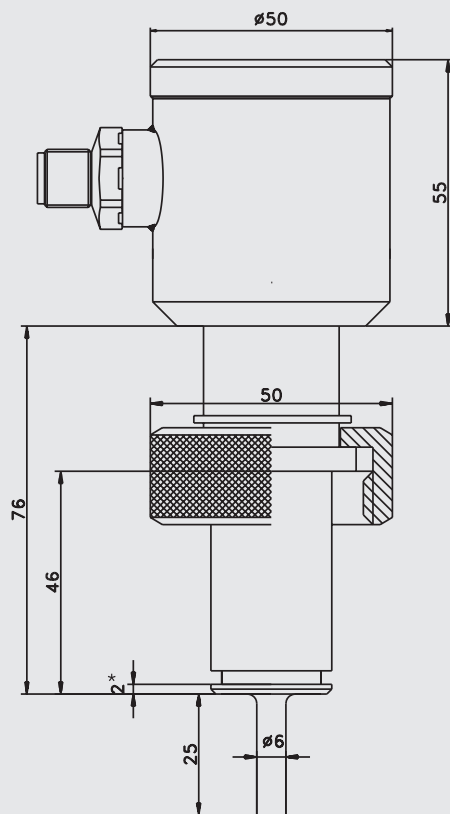
wh ye bn gn 1st Pt100  
rd bu pk gy 2nd Pt100

Fixed cable connection  
with 2 x Pt100 (PTFE)

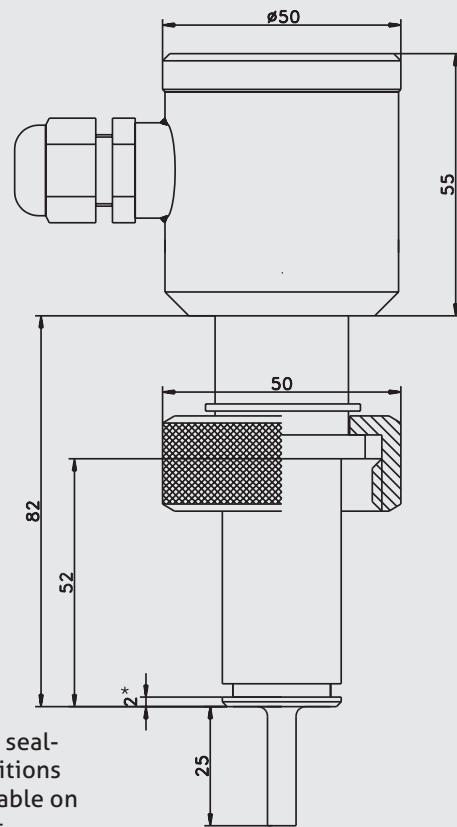
rd rd wh 1st Pt100  
vt vt ye 2nd Pt100



TFP-90 / 46 / ... | TFP-90.2 / 46 / ...

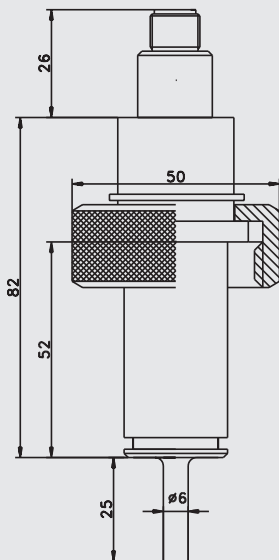


TFP-90 / 52 / ... | TFP-90.2 / 52 / ...

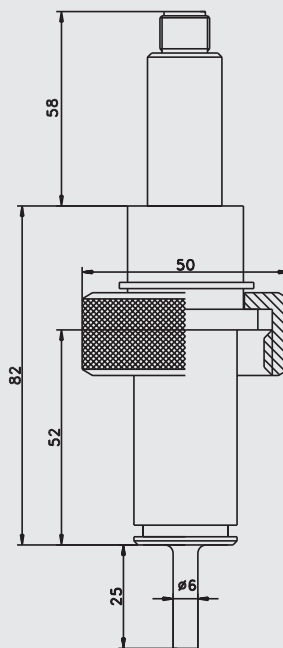


\* Other sealing positions deliverable on request.

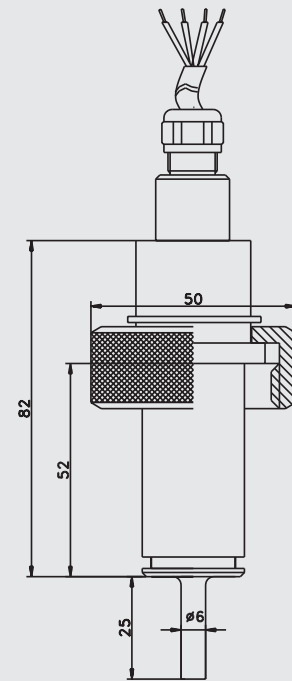
TFP-96 / 52 / ...



TFP-96 / 52 / ... / MPU-M



TFP-98 / 52 / ... | TFP-98.2 / 52 / ...

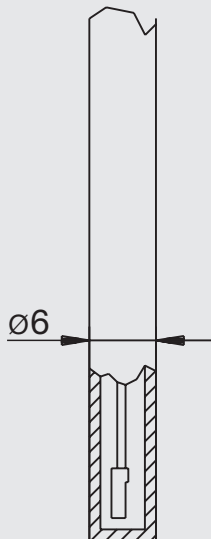


**Sensor tip diameter and response time**

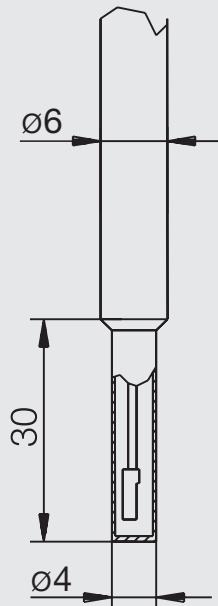
All temperature sensors are available with smaller sensor tips, to ensure a shorter response time. The below-mentioned times were measured by immersing a temperature sensor with room temperature into boiling water.

**Sensor tip Ø 6 mm**

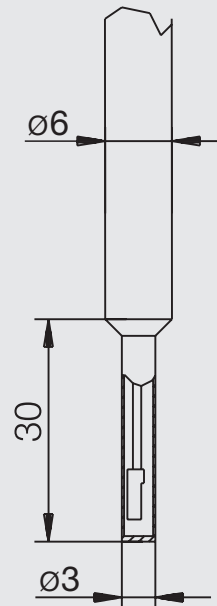
50 %-time:  $t_{50} \leq 3.0 \text{ s}$   
90 %-time:  $t_{90} \leq 8.0 \text{ s}$

**Sensor tip Ø 4 mm**

50 %-time:  $t_{50} \leq 2.4 \text{ s}$   
90 %-time:  $t_{90} \leq 6.5 \text{ s}$

**Sensor tip Ø 3 mm**

50 %-time:  $t_{50} \leq 0.5 \text{ s}$   
90 %-time:  $t_{90} \leq 1.5 \text{ s}$



**Transport/Storage**

- No outdoor storage
- Dry and dust free
- Not exposed to corrosive media
- Protected against solar radiation
- Avoiding mechanical shock and vibration
- Storage temperature -55...+90 °C
- Relative humidity max. 98 %

**Reshipment**

- Sensors shall be clean and must not be contaminated with dangerous media!
- Use suitable transport packaging only to avoid damage of the equipment!

**Disposal**

- Electrical devices should not be disposed of with household trash. They must be recycled in accordance with national laws and regulations.
- Take the device directly to a specialized recycling company and do not use municipal collection points.

**Conventional usage**

- Not suitable for applications in explosive areas.
- Not suitable for applications in security-relevant equipments (SIL).

**Standards and guidelines**

- You have to comply with applicable regulations and directives.

**Cleaning/Maintenance**

- In case of using pressure washers, don't point nozzle directly to electrical connections!

**Note on CE**

- Applicable directives:  
Electromagnetic Compatibility Directive 2014/30/EU
- Compliance with the applicable EU directives is identified by the CE label on the product.
- The operating company is responsible for complying with the guidelines applicable to the entire installation.

## Temperature Transmitter MPU-LCD with Display

**Application/Specified usage**

- 4...20 mA transmitter with LCD for Pt100 temperature sensor
- For installation in temperature sensor
- Sensor monitoring

**Features**

- 4-digit display with green backlight
- Temperature measurement in °C and °F
- Easy range select by one button
- Lower costs for wiring because of 2-wire technology

**Note**

See product information "MPU-LCD" for details.

**Option MPU-LCD  
(display in the connection head)**

## Order code for version with 1 x Pt100

|   |   |       |     |     |      |         |         |
|---|---|-------|-----|-----|------|---------|---------|
| TFP-90  | (connecting head Ø 49 mm, non-sensitive design to vibrations)                               |       |     |     |      |         |         |
| TFP-96  | (connecting head Ø 18 mm, electrical connection M12 plug)                                   |       |     |     |      |         |         |
| TFP-98  | (connecting head Ø 18 mm, electrical connection 2.5 m PTFE-cable; no transmitter possible!) |       |     |     |      |         |         |
| Connection length in mm (delivery incl. sealing ring)                       |   |       |     |     |      |         |         |
| 46  |   |       |     |     |      |         |         |
| 52  |   |       |     |     |      |         |         |
| Sensor length in mm   |   |       |     |     |      |         |         |
| 025   |   |       |     |     |      |         |         |
| xxx   | (special length on request)   |       |     |     |      |         |         |
| Diameter sensor tip in mm   |   |       |     |     |      |         |         |
| 3   | (on request)  |       |     |     |      |         |         |
| 4   | (on request)  |       |     |     |      |         |         |
| 6   |   |       |     |     |      |         |         |
| Accuracy class Pt100  |   |       |     |     |      |         |         |
| A   |   |       |     |     |      |         |         |
| 1/3B  |   |       |     |     |      |         |         |
| 1/10B   |   |       |     |     |      |         |         |
| Electrical connection (not selectable at TFP-96 and -98)                    |   |       |     |     |      |         |         |
| PG  | (cable gland M16x1.5)   |       |     |     |      |         |         |
| M12   | (M12 plug, standard with MPU-LCD)   |       |     |     |      |         |         |
| Transmitter   |   |       |     |     |      |         |         |
| X   | (without)   |       |     |     |      |         |         |
| only for TFP-90   |   |       |     |     |      |         |         |
| MPU-4   | (programmable)  |       |     |     |      |         |         |
| MPU-H   | (HART-protocol)   |       |     |     |      |         |         |
| MPU-LCD   | (with display)  |       |     |     |      |         |         |
| only for TFP-96   |   |       |     |     |      |         |         |
| MPU-M   | (programmable)  |       |     |     |      |         |         |
| Measuring range MPU<br>(only for types with transmitter;<br>not at MPU-LCD) |   |       |     |     |      |         |         |
| -10...40  | (range -10...40 °C)   |       |     |     |      |         |         |
| 0...50  | (range 0...50 °C)   |       |     |     |      |         |         |
| 0...100   | (range 0...100 °C)  |       |     |     |      |         |         |
| 0...150   | (range 0...150 °C)  |       |     |     |      |         |         |
| 0...200   | (range 0...200 °C)  |       |     |     |      |         |         |
| xx...yy   | (special range)   |       |     |     |      |         |         |
| TFP-90 /  | 52 /  | 025 / | 6 / | A / | PG / | MPU-4 / | 0...100 |

## Order code for version with 2 x Pt100

**TFP-90.2** (connecting head Ø 49 mm, non-sensitive design to vibrations, no transmitter possible!)

**TFP-98.2** (connecting head Ø 18 mm, electrical connection 2.5 m PTFE-cable; no transmitter possible!)

## Connection length in mm (delivery incl. sealing ring)

46

52

## Sensor length in mm

025

xxx

(special length on request)

## Diameter sensor tip in mm

3 (on request)

4 (on request)

6

## Accuracy class Pt100

A

1/3B

1/10B

## Electrical connection only for TFP-90.2

PG

(cable gland M16x1.5)

2xPG

(2 x cable gland M16x1.5)

2xM12

(2 x M12 plug)

TFP-90.2 / 52 / 025 / 6 / A / 2xM12

## Accessories

## PVC-cabel with M12-connection made of 1.4305, IP 69 K, unshielded

M12-PVC / 4-5 m

PVC-cable 4-pin, length 5 m

M12-PVC / 4-10 m

PVC-cable 4-pin, length 10 m

M12-PVC / 4-25 m

PVC-cable 4-pin, length 25 m

## PVC-cable with M12-connection made of brass plated, IP 69 K, shielded

M12-PVC / 4G-5 m

PVC-cable 4-pin, length 5 m

M12-PVC / 4G-10 m

PVC-cable 4-pin, length 10 m

M12-PVC / 4G-25 m

PVC-cable 4-pin, length 25 m

## Programming adapter

MPU-P 9701

Programming adapter for  
MPU-4, MPU-H and MPU-M

## Sealing ring for Fermenter connection, material EPDM

DRF-20

## PVC-cable with M12-connection



## Programming adapter MPU-P 9701

